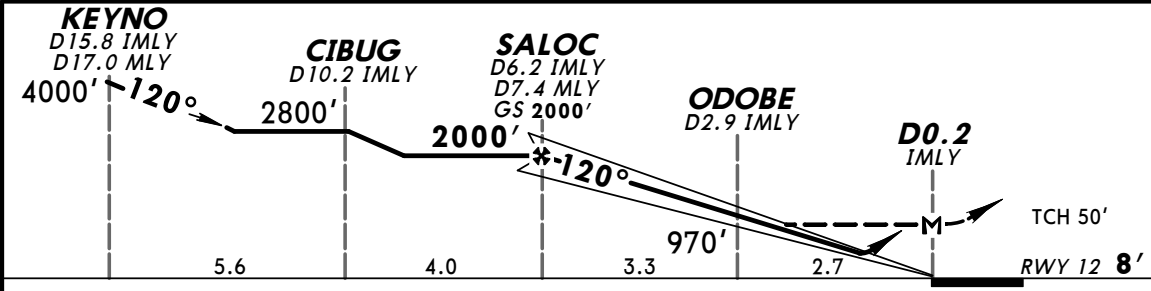
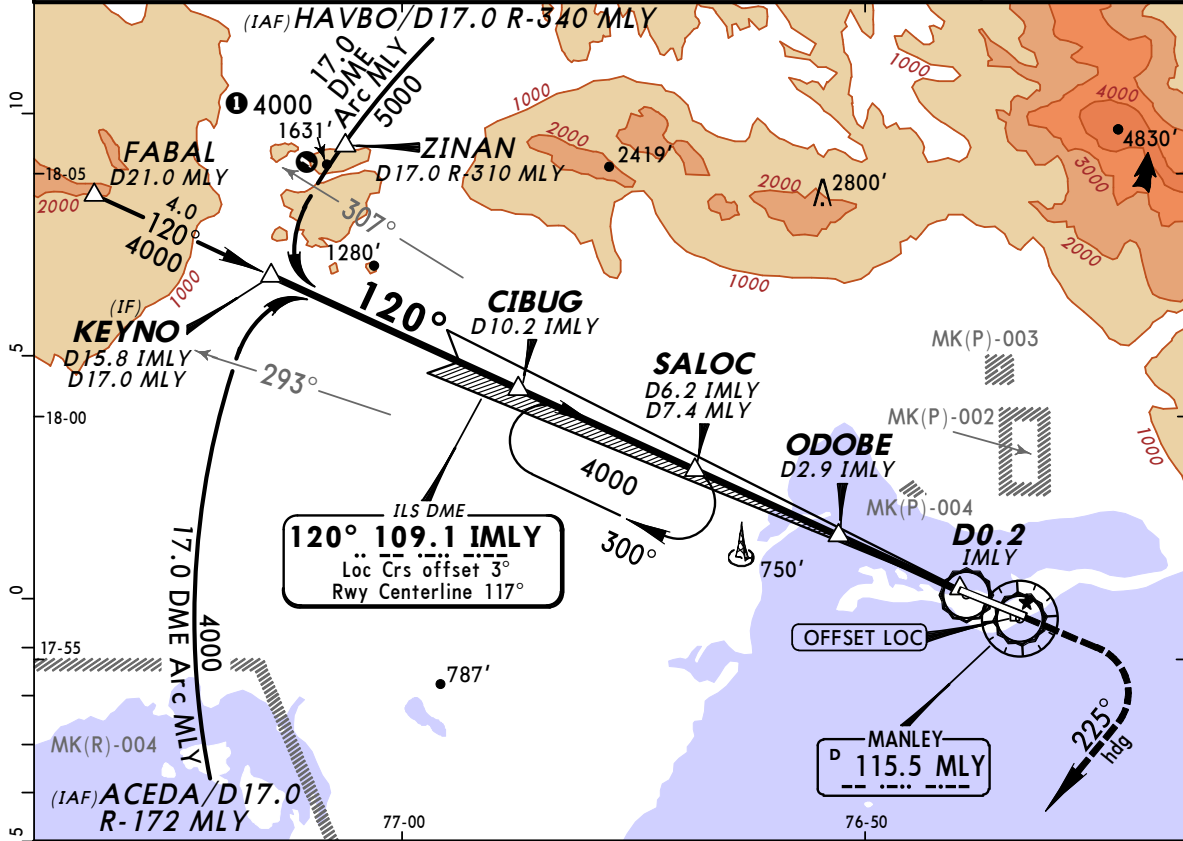


MKJP/KIN
NORMAN MANLEY INTL

JEPPESSEN
30 APR 10 (11-1)

KINGSTON, JAMAICA
ILS Rwy 12

ATIS 127.7		MANLEY Approach (R) 120.6		MANLEY Tower 118.65		*Ground 121.7	
LOC IMLY 109.1	Final Apch Crs 120°	GS SALOC 2000' (1992')	ILS DA(H) 278' (270')	Apt Elev 10' RWY 12 8'			
MISSED APCH: Climb to 1000'. Then turn RIGHT to hdg 225° to intercept 17.0 DME MLY VOR Arc at 4000' to KEYNO D17.0 MLY. Thence to SALOC D7.4 MLY and hold.							
Alt Set: hPa (IN on req) Rwy Elev: 0 hPa Trans level: FL 180 Trans alt: 17000'							MSA MLY VOR



Gnd speed-Kts	70	90	100	120	140	160	SALS 1000'
GS 3.00°	377	484	538	646	753	861	
MAP at D0.2 IMLY or SALOC to MAP 6.0	5:09	4:00	3:36	3:00	2:34	2:15	

STRAIGHT-IN LANDING RWY 12				CIRCLE-TO-LAND			
ILS		LOC (GS out)		Not Authorized North of Extended Rwy Centerline			
DA(H) 278' (270')		MDA(H) 328' (320')					
FULL		ALS out		Max Kts	MDA(H)		
A			1.9 Km	100	1050' (1040') - 1.9 Km		
B			2.3 Km	135	1050' (1040') - 2.8 Km		
C	1.9 Km		2.8 Km	180	1150' (1140') - 3.7 Km		
D			3.2 Km	205	1150' (1140') - 4.6 Km		

PANS OPS

CHANGES: Communication.

© JEPPESSEN, 2004, 2010. ALL RIGHTS RESERVED.