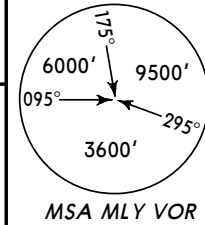
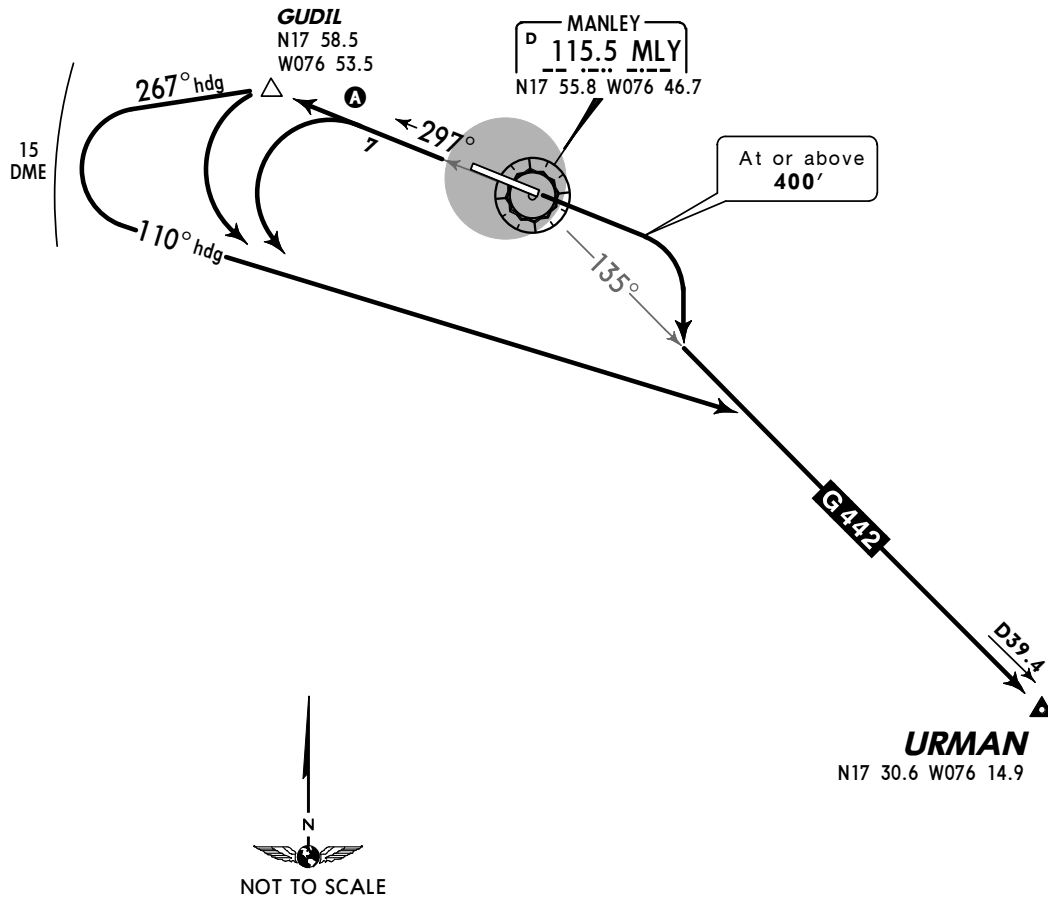


Apt Elev
10'

Trans level: FL180 Trans alt: 17000'
1. SOUTHEASTBOUND departure via ATS route G-442.
2. VOR/DME required.



URMAN ONE DEPARTURE
SPEED: MAX 250 KT BELOW 10000'



RWY	INITIAL CLIMB
12	Climb on runway heading to at or above 400', then turn RIGHT.
30	A Climb on MLY R-297 to cross 2000' at or prior to GUDIL. Then turn LEFT. (If unable to cross GUDIL at 2000', use maximum rate of climb direct to GUDIL then turn LEFT via 267° heading climbing to 2000' within MLY 15 DME).
ROUTING	
Intercept and proceed via MLY R-135 to URMAN.	