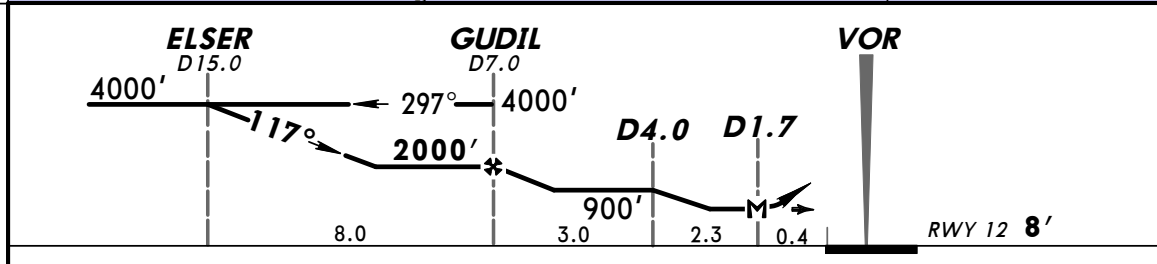
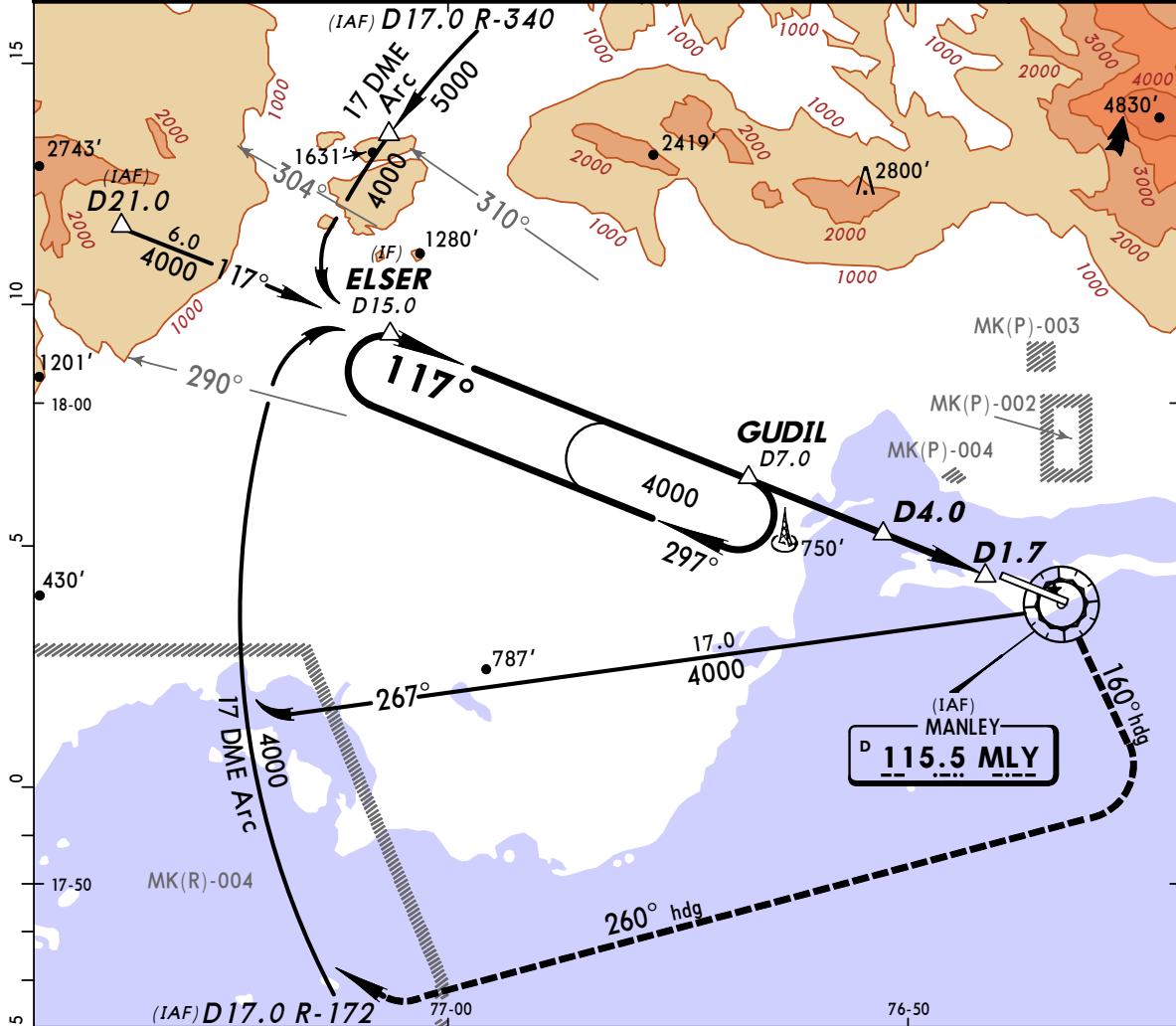


MKJP/KIN
NORMAN MANLEY INTL

JEPPESEN
 30 APR 10 **(13-1)**

KINGSTON, JAMAICA
VOR DME Rwy 12

ATIS 127.7		MANLEY Approach (R) 120.6		MANLEY Tower 118.65		*Ground 121.7
VOR MLY 115.5	Final Apch Crs 117°	Minimum Alt GUDIL 2000' (1992')	MDA(H) 400' (392')	Apt Elev 10'	RWY 12 8'	
MISSED APCH: Pull up to MLY VOR then climbing RIGHT turn via 160° heading to 2000', thence climbing RIGHT turn via 260° heading to intercept MLY VOR 17 DME Arc at 4000' to ELSER D15.0 thence to hold at GUDIL D7.0.						
Alt Set: hPa (IN on req) Rwy Elev: 0 hPa Trans level: FL 180 Trans alt: 17000' 1. Arrivals from East sector enter the holding pattern at or above 9500'.						MSA MLY VOR



				SALS	MLY
				PAPI - PAPI	115.5
MAP at D1.7					

STRAIGHT-IN LANDING RWY12			CIRCLE-TO-LAND Not Authorized North of Extended Rwy Centerline		
MDA(H) 400' (392')			MDA(H)		
ALS out			Max Kts		
A	1.9 Km		100	1040' (1030') - 1.9 Km	
B	2.4 Km		135	1040' (1030') - 2.8 Km	
C	2.4 Km		180	1040' (1030') - 3.7 Km	
D	3.3 Km		205	1040' (1030') - 4.6 Km	

PANS OPS

CHANGES: Communication.

© JEPPESEN, 1999, 2010. ALL RIGHTS RESERVED.