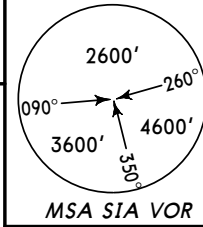
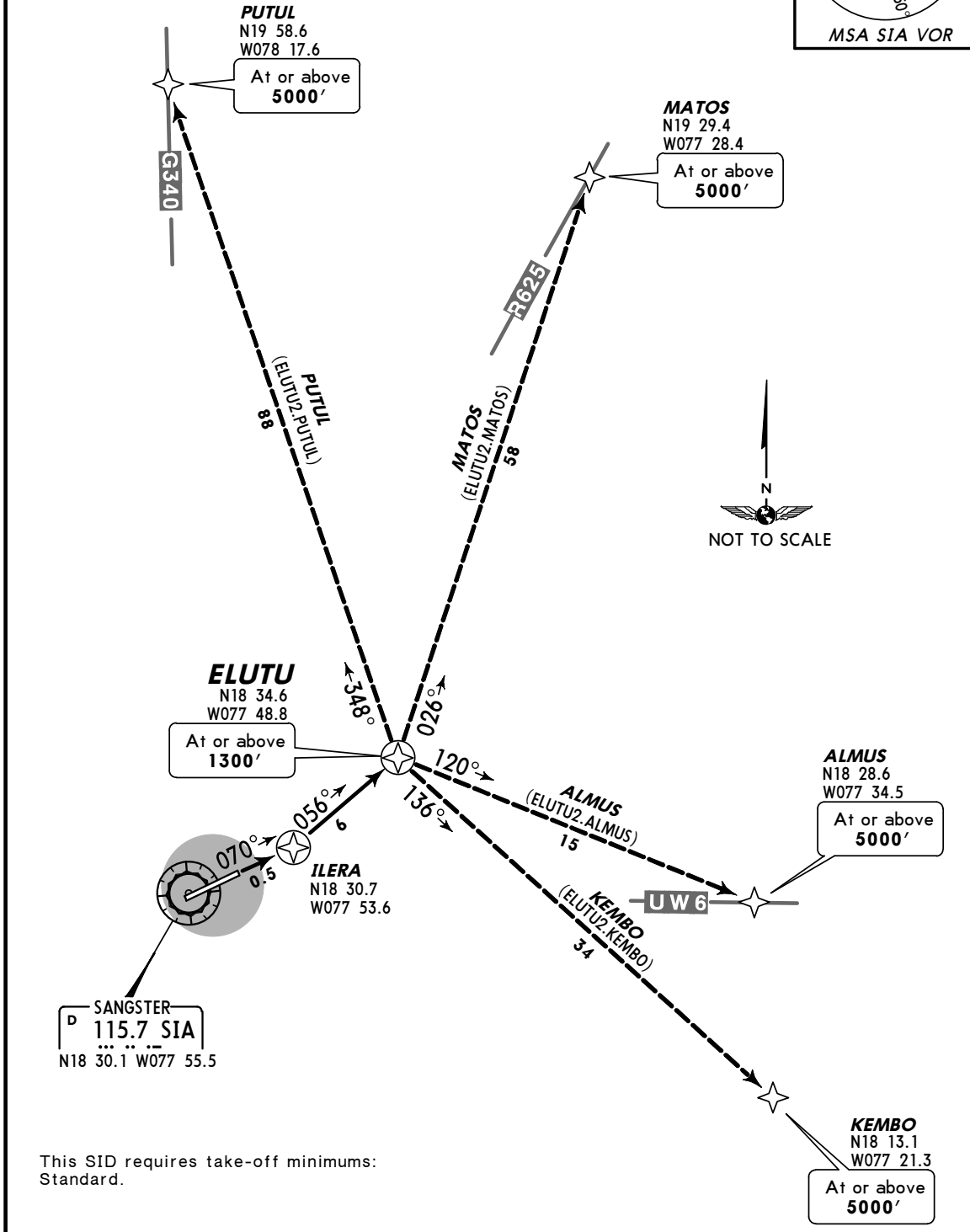


Apt Elev 7'	Trans level: FL180 Trans alt: 17000'
	1. GPS required. 2. For use by /E, /F, /R (RNP 2.0) and /G equipped aircraft.



ELUTU TWO RNAV DEPARTURE (ELUTU2.ELUTU)
(RWY 07)



This SID requires take-off minimums:
Standard.

INITIAL CLIMB

Proceed via 070° course to ILERA, then direct ELUTU, climb to assigned altitude.

TRANSITIONS

ALMUS	Turn RIGHT direct ALMUS, then as filed.
KEMBO	Turn RIGHT direct KEMBO, then as filed.
MATOS	Turn LEFT direct MATOS, then as filed.
PUTUL	Turn LEFT direct PUTUL, then as filed.