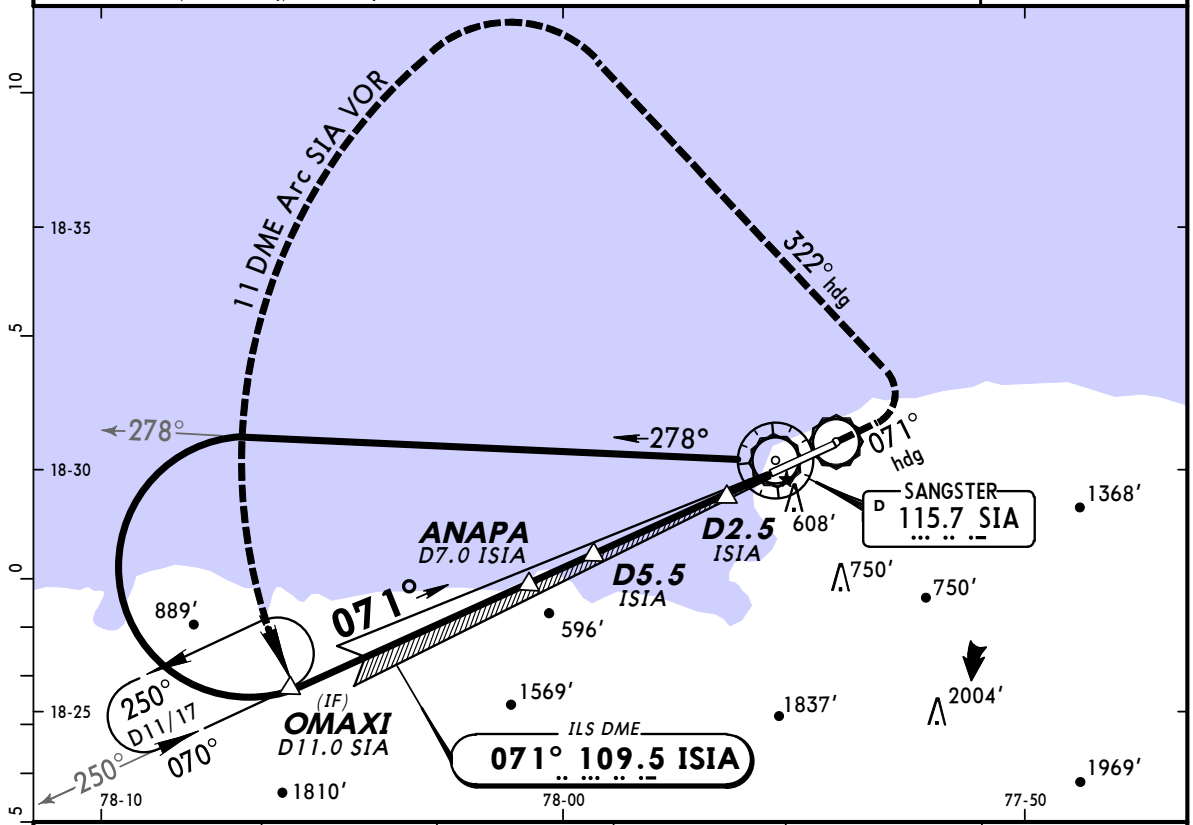


MKJS/MBJ
SANGSTER INTL

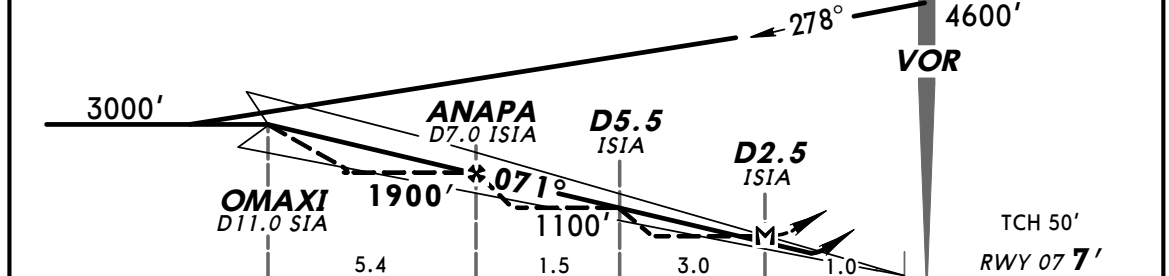
JEPPESEN
17 OCT 08 (11-1)

MONTEGO BAY, JAMAICA
ILS DME Rwy 07

ATIS 127.9		SANGSTER Approach 120.8		SANGSTER Tower 118.75		Ground 121.7	
LOC ISIA 109.5	Final Apch Crs 071°	Minimum Alt ANAPA 1900' (1893')	ILS DA(H) 307' (300')	Apt Elev 7'	RWY 07 7'		
MISSED APCH: Climb on 071° heading. At 500' (LOC only 800'), LEFT turn to 322° heading, then LEFT turn to intercept and proceed via SIA VOR 11 DME ARC to OMAXI SIA R-250/D11.0 climbing to 3000'. Max IAS 200 Kts until established on 322° heading.							MSA SIA VOR
Alt Set: hPa (IN on req)		Rwy Elev: 0 hPa		Trans level: FL 180		Trans alt: 17000'	



ISIA DME	7.0	6.0	5.0	4.0	3.0
ALTITUDE	1793'	1458'	1124'	791'	457'



Gnd speed-Kts	70	90	100	120	140	160		on 071° hdg	
GS	3.00°	377	484	538	646	753			861
LOC Descent Gradient	5.5%	390	502	557	668	780			891
MAP at D2.5 ISIA									

STRAIGHT-IN LANDING RWY07				CIRCLE-TO-LAND			
ILS		LOC (GS out)		Not Authorized Southeast of Extended Rwy Centerline			
DA(H) 307' (300')		MDA(H) A, B: 580' (573') C, D: 600' (593')		Max Kts			
ALS out		ALS out		MDA(H)			
A	1.3 km	1.9 km		100	900' (893') - 1.9 km		
B		2.4 km		135	900' (893') - 2.8 km		
C		2.4 km		180	1000' (993') - 3.7 km		
D		3.0 km		205	1000' (993') - 4.6 km		

PANS OPS

CHANGES: None.

© JEPPESEN, 2001, 2008. ALL RIGHTS RESERVED.