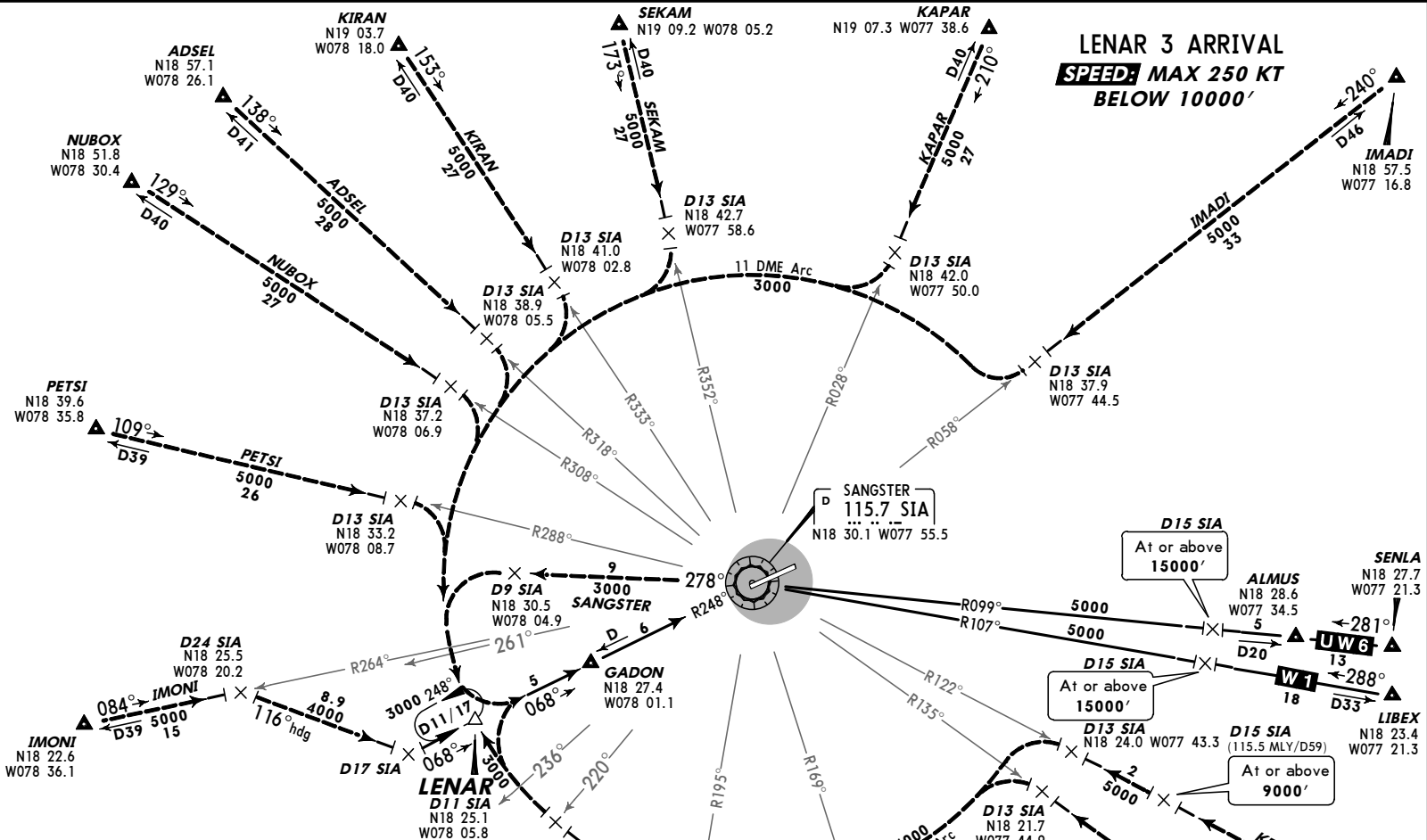
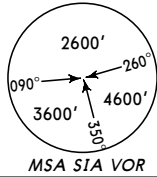


ATIS
127.9

Apt Elev
7'

Alt Set: hPa (IN on req) Trans level: FL180 Trans alt: 17000'

1. VOR/DME required.
2. DME Arcs and hold are based on SIA.



TRANSITIONS

ADSEL	From ADSEL to LENAR: Via SIA R-318 to D13 SIA, then turn RIGHT via SIA 11 DME Arc.
BOSOM	From BOSOM to LENAR: Via SIA R-195 to D13 SIA, then turn LEFT via SIA 11 DME Arc.
IMADI	From IMADI to LENAR: Via SIA R-058 to D13 SIA, then turn RIGHT via SIA 11 DME Arc.
IMONI	From IMONI to LENAR: Via SIA R-264 to D24 SIA, then turn RIGHT to heading 116° to intercept the SIA R-248 inbound at D17 SIA.
KAPAR	From KAPAR to LENAR: Via SIA R-028 to D13 SIA, then turn RIGHT via SIA 11 DME Arc.
KEMBO	From KEMBO to LENAR: Via SIA R-122 to D13 SIA, then turn LEFT via SIA 11 DME Arc.
KESPA	From KESPA to LENAR: Via SIA R-135 to D13 SIA, then turn LEFT via SIA 11 DME Arc.
KIRAN	From KIRAN to LENAR: Via SIA R-333 to D13 SIA, then turn RIGHT via SIA 11 DME Arc.
NUBOX	From NUBOX to LENAR: Via SIA R-308 to D13 SIA, then turn RIGHT via SIA 11 DME Arc.
PETSU	From PETSU to LENAR: Via SIA R-288 to D13 SIA, then turn RIGHT via SIA 11 DME Arc.
SANGSTER	From SIA to LENAR: Via SIA R-278 outbound to D9 SIA, then turn LEFT via SIA 11 DME Arc.
SEKAM	From SEKAM to LENAR: Via SIA R-352 to D13 SIA, then turn RIGHT via SIA 11 DME Arc.
TABRI	From TABRI to LENAR: Via SIA R-169 to D13 SIA, then turn LEFT via SIA 11 DME Arc.

ROUTING

Hold at LENAR at ATC assigned altitude unless/until cleared by ATC to execute the VOR/DME Rwy 07 Approach procedure.