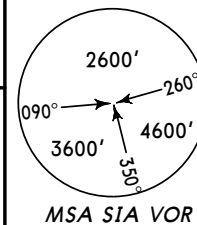


Apt Elev 7'
Trans level: FL 180 Trans alt: 17000'
All routes from SIA.

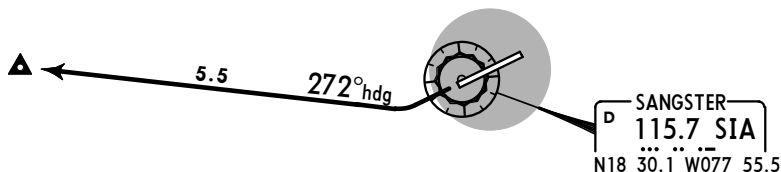


TEXUS TWO DEPARTURE (VECTOR)
(RWY 25)



TEXUS
(SIA R-269/D5.4)
N18 29.5
W078 01.1

Climbing to
5000'



LOST COMMS ▼ LOST COMMS ▼ LOST COMMS ▼ LOST COMMS ▼ LOST COMMS ▼ LOST COMMS ▼ LOST COMMS ▼

- On recognition of communication failure 7 minutes or less after take-off and in IFR conditions, proceed as follows;
1. Squawk 7600; and
 2. **MAINTAIN** last assigned altitude and heading for 7 minutes after recognition of communication failure, then
 3. Climb to **10000'** maintaining last assigned heading; then
 4. Proceed direct to nearest fix associated with filed flight plan route continuing climb to flight plan cruising level.

If in VFR conditions, continue to fly in VMC and land at the nearest suitable aerodrome.

If communication failure occurs more than 7 minutes after take-off, comply with the appropriate procedures for communication failure and proceed according to the current flight plan route to destination airport, unless it is considered inadvisable.

LOST COMMS ▲ LOST COMMS ▲ LOST COMMS ▲ LOST COMMS ▲ LOST COMMS ▲ LOST COMMS ▲

INITIAL CLIMB

After take-off turn RIGHT to heading 272° and proceed to TEXUS (SIA R-269/D5.4) climbing to **5000'**. ATC will provide RADAR vectors to intercept filed/assigned ATS routes, before reaching TEXUS.