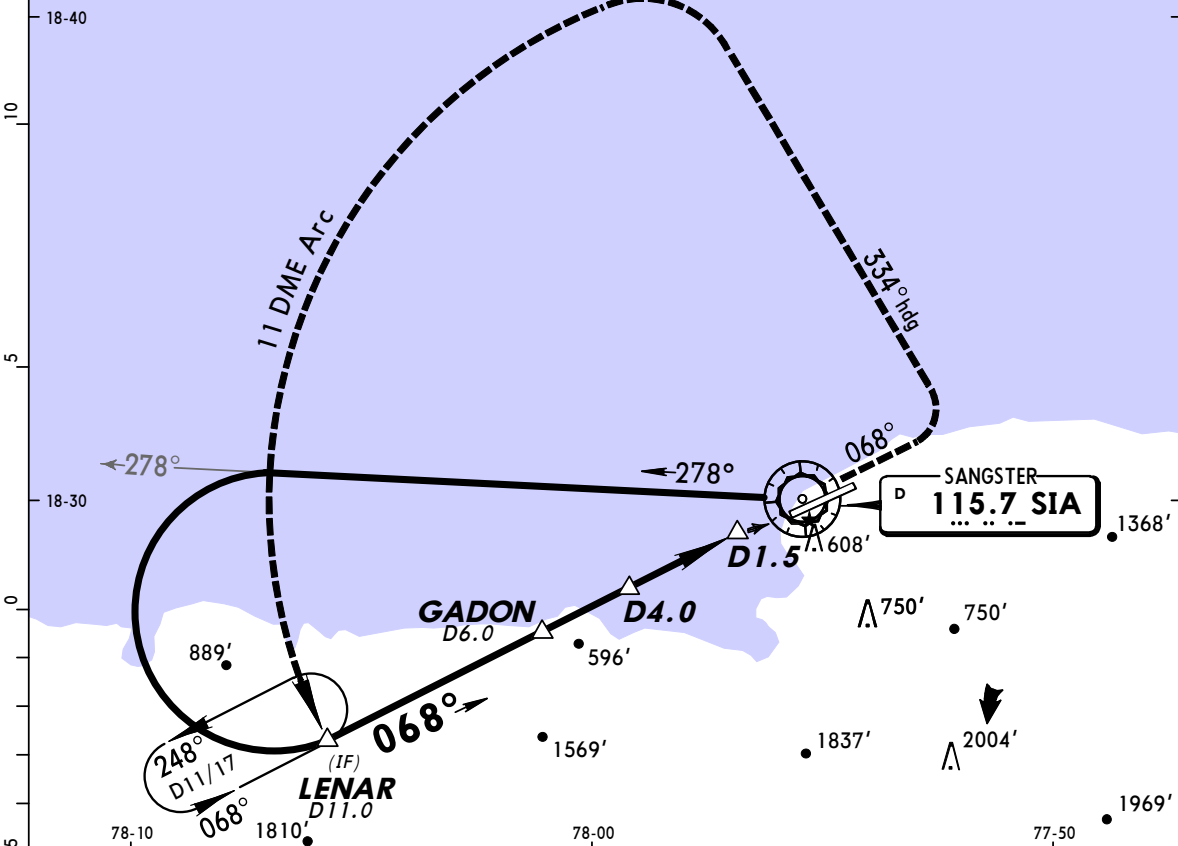


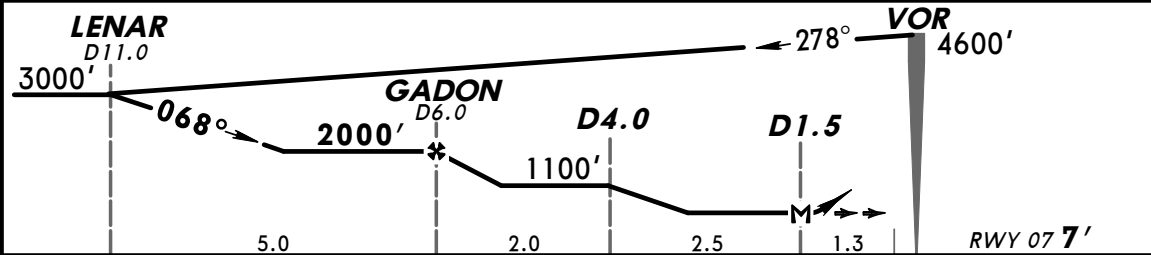
MKJS/MBJ
SANGSTER INTL

JEPPESEN MONTEGO BAY, JAMAICA
27 JUL 07 (13-1)
VOR DME Rwy 07

ATIS 127.9		SANGSTER Approach 120.8		SANGSTER Tower 118.75		Ground 121.7	
VOR SIA 115.7	Final Apch Crs 068°	Minimum Alt GADON 2000' (1993')	MDA(H) Refer to Minimums	Apt Elev 7'	RWY 07 7'		
MISSED APCH: Climb on SIA VOR R-068. At 800', LEFT turn to 334° heading, then LEFT turn to intercept and proceed via SIA VOR 11 DME Arc to LENAR R-248/D11.0 climbing to 3000'. Maximum IAS 200 kts until established on 334° heading.							
Alt Set: hPa (IN on req) Rwy Elev: 0 hPa Trans level: FL 180 Trans alt: 17000'							



SIA DME	5.0	4.0	3.0	2.0
ALTITUDE	1672'	1344'	1016'	688'



Gnd speed-Kts	70	90	100	120	140	160	SALS PAPI PAPI	SIA on 115.7 R-068
Descent Gradient 5.4%	383	492	547	656	766	875		
MAP at D1.5								

STRAIGHT-IN LANDING RWY 07			CIRCLE-TO-LAND		
A, B: 590' (583')			Not Authorized Southeast of Extended Rwy Centerline		
MDA(H) C: 610' (603')			Max Kts		
D: 630' (623')			MDA(H)		
ALS out			100	900' (893') -2.6 km	
A			135	900' (893') -2.8 km	
B	2.6 km		180	1000' (993') -3.7 km	
C			205	1220' (1213') -4.6 km	
D	2.8 km				

PANS OPS