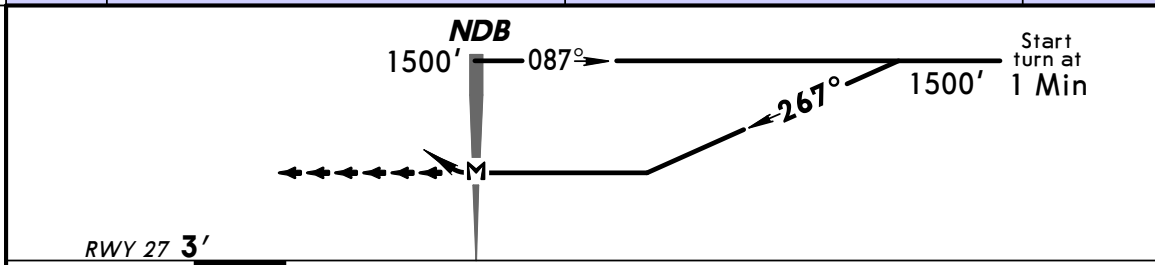
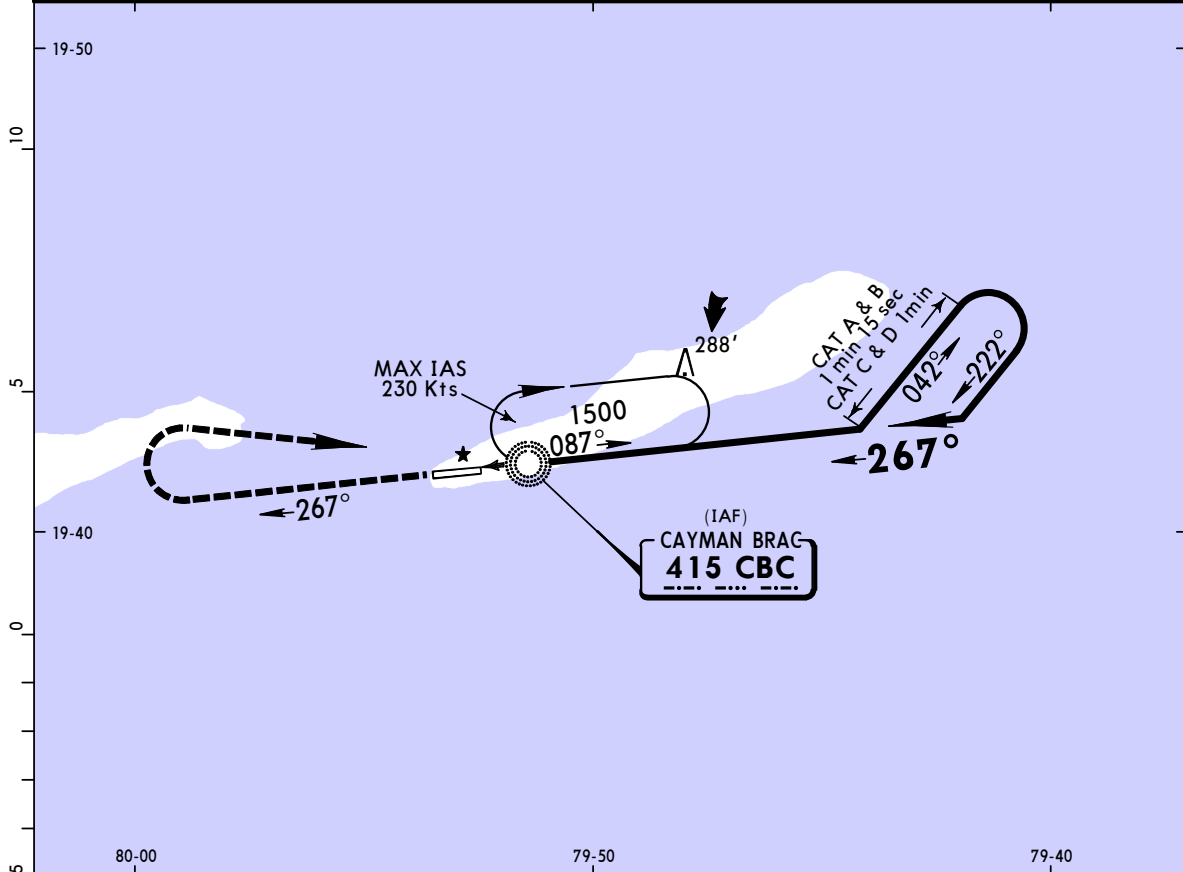


MWCB/CYB
GERRARD-SMITH INTL

JEPPESSEN
8 JAN 10 (16-1)

CAYMAN BRAC, CAYMAN IS
NDB Rwy 27

*CAYMAN Approach			*GERRARD-SMITH Tower		
120.2			118.4		
NDB CBC 415	Final Apch Crs 267°	No FAF	MDA(H) 520' (517')	Apt Elev 4' Rwy 27 3'	1300'
MISSED APCH: Climb straight ahead to 1500', turn RIGHT direct CBC NDB and hold.					
Alt Set: hPa (IN on req) Rwy Elev: 0 hPa Trans level: FL 180 Trans alt: 17000' 1. IFR and VFR aircraft operations in excess of 250 Kts IAS below 10500', are not permitted within the Cayman Islands TMA and Gerrard-Smith CTR.					MSA CBC NDB



REIL	1500'	RT	CBC 415
PAPI-L	↑	D	

STRAIGHT-IN LANDING RWY 27		CIRCLE-TO-LAND	
MDA(H) 520' (517')		MDA(H)	
A	1600m	100	520' (516') - 1600m
B		135	
C	2400m	180	600' (596') - 2400m
D	2800m	205	700' (696') - 3600m

PANS OPS

CHANGES: Procedure.

© JEPPESSEN, 1999, 2010. ALL RIGHTS RESERVED.