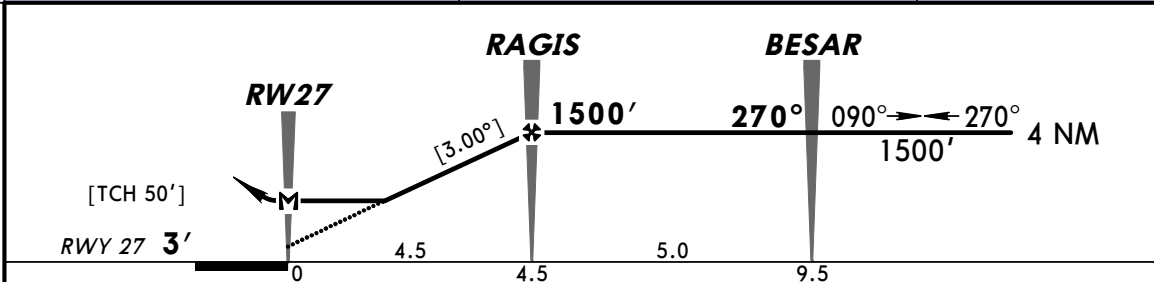
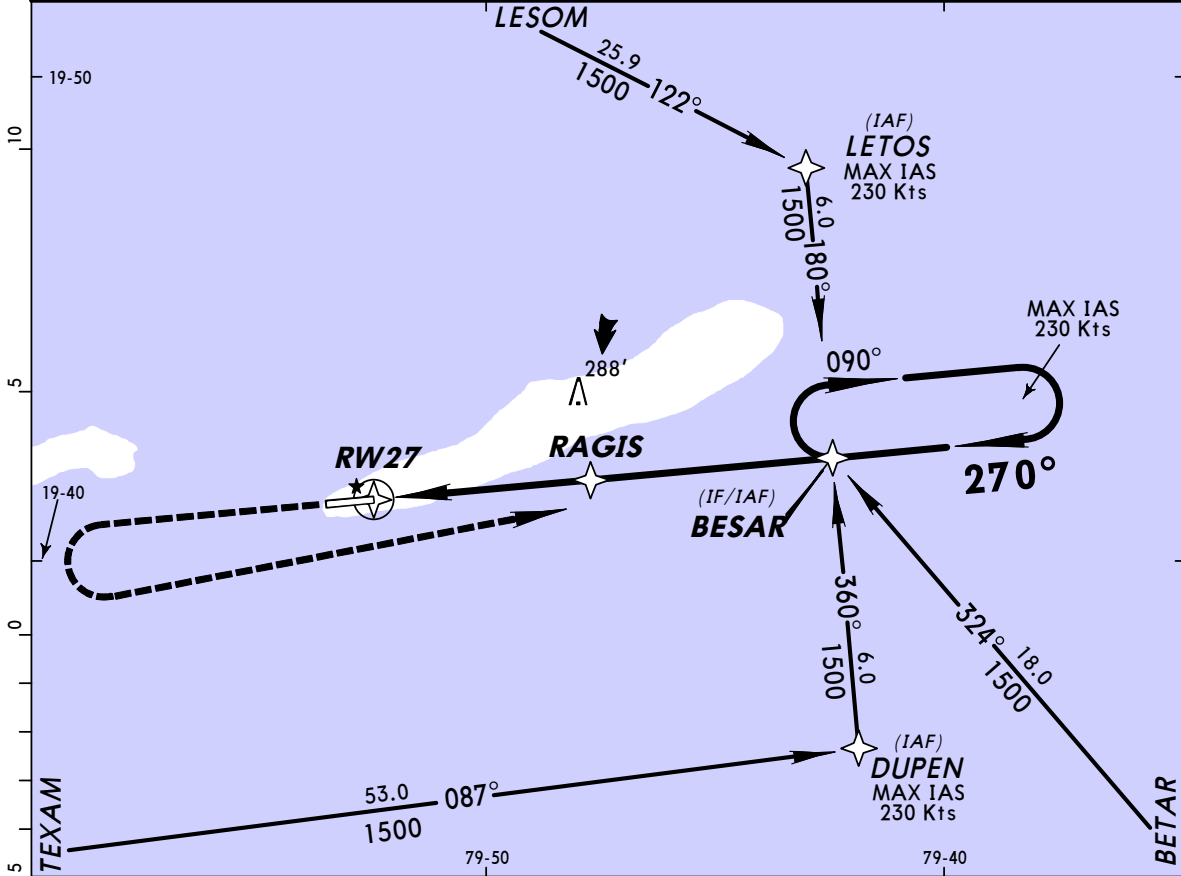


MWCB/CYB
GERRARD-SMITH INTL

JEPPESSEN
8 JAN 10 (12-2)

CAYMAN BRAC, CAYMAN IS
RNAV (GNSS) Rwy 27

*CAYMAN Approach 120.2				*GERRARD-SMITH Tower 118.4	
RNAV	Final Apch Crs 270°	Minimum Alt RAGIS 1500' (1497')	LNAV MDA(H) 440' (437')	Apt Elev 4'	1300'
Rwy 27 3'					
MISSED APCH: Climb straight ahead to 1500', turn LEFT direct BESAR and hold.					MSA Airport
Alt Set: hPa (IN on req) Rwy Elev: 0 hPa Trans level: FL 180 Trans alt: 17000' 1. IFR and VFR aircraft operations in excess of 250 Kts IAS below 10500' are not permitted within the Cayman Islands TMA and Gerrard-Smith CTR.					



Gnd speed-Kts	70	90	100	120	140	160	REIL	1500'	←	→	BESAR
Descent angle [3.00°]	372	478	531	637	743	849	PAPI-L	↑	LT		
MAP at RW27											

STRAIGHT-IN LANDING RWY 27			CIRCLE-TO-LAND		
LNAV			Max Kts		
MDA(H) 440' (437')			MDA(H)		
A	1600m		100	460' (456')-1600m	
B			135	500' (496')-1600m	
C	2000m		180	600' (596')-2400m	
D	2400m		205	700' (696')-3600m	

PANS OPS

CHANGES: Procedure.

© JEPPESSEN, 2001, 2010. ALL RIGHTS RESERVED.