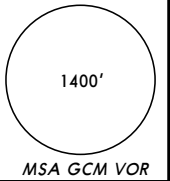


\*ATIS  
132.35

Apt Elev  
8'

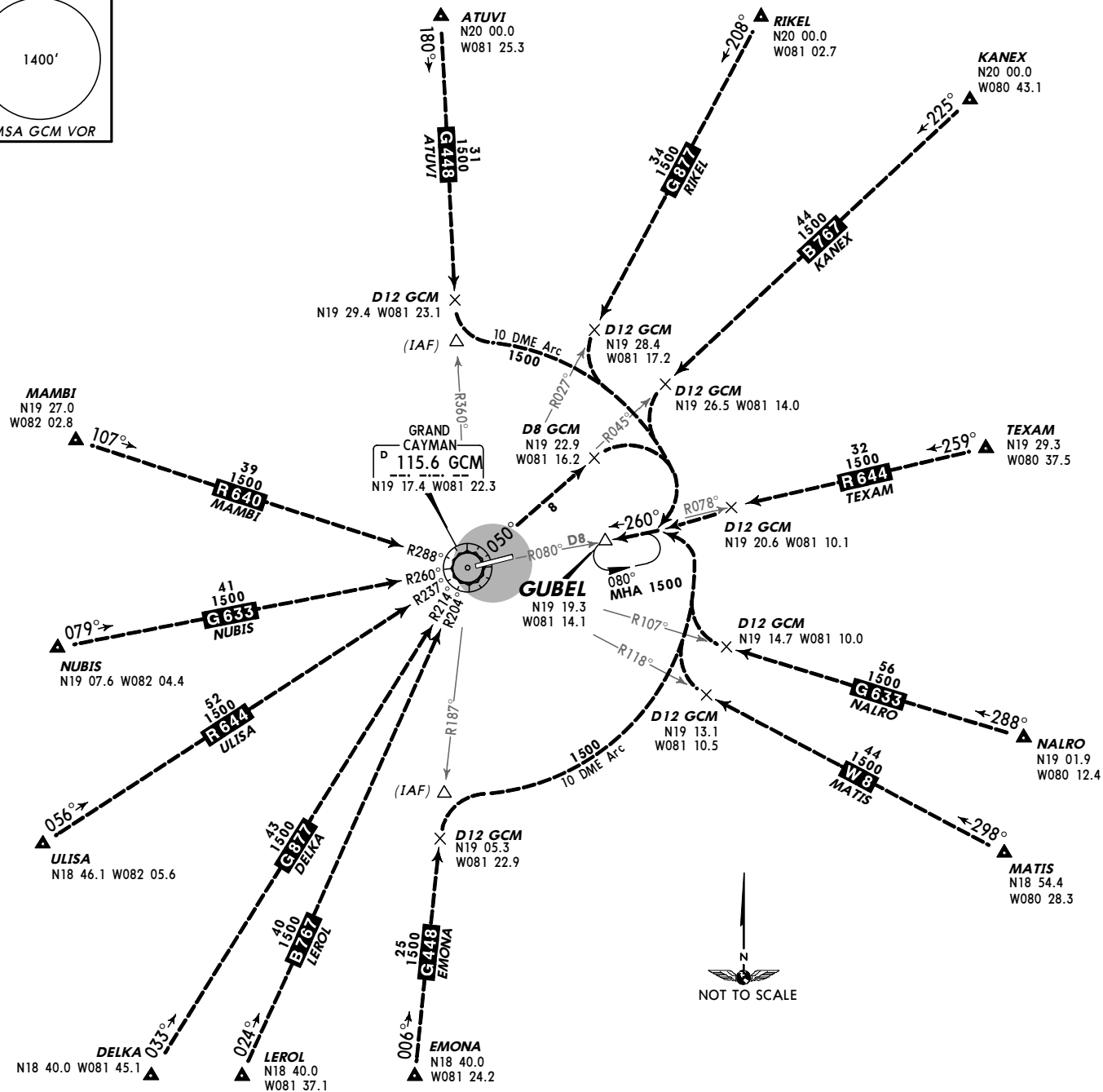
Alt Set: hPa and INCHES Trans level: FL180 Trans alt: 17000'

VOR/DME required.



GUBEL TWO ARRIVAL

**SPEED: MAX 250 KT BELOW 10500'**



TRANSITIONS

ATUVI	From ATUVI to GUBEL: Via GCM R-360 inbound to D12 GCM, then turn LEFT via GCM 10 DME Arc and GCM R-080 inbound.
DELKA	From DELKA to GUBEL: Via GCM R-214 inbound to GCM, then via GCM R-050 outbound to D8 GCM, then turn RIGHT via GCM 10 DME Arc and GCM R-080 inbound.
EMONA	From EMONA to GUBEL: Via GCM R-187 inbound to D12 GCM, then turn RIGHT via GCM 10 DME Arc and GCM R-080 inbound.
KANEX	From KANEX to GUBEL: Via GCM R-045 inbound to D12 GCM, then turn LEFT via GCM 10 DME Arc and GCM R-080 inbound.
LEROL	From LEROL to GUBEL: Via GCM R-204 inbound to GCM, then turn RIGHT via GCM R-050 outbound to D8 GCM, then turn RIGHT via GCM 10 DME Arc and GCM R-080 inbound.
MAMBI	From MAMBI to GUBEL: Via GCM R-288 inbound to GCM, then via GCM R-050 outbound to D8 GCM, then turn RIGHT via GCM 10 DME Arc and GCM R-080 inbound.
MATIS	From MATIS to GUBEL: Via GCM R-118 inbound to D12 GCM, then turn RIGHT via GCM 10 DME Arc and GCM R-080 inbound.
NALRO	From NALRO to GUBEL: Via GCM R-107 inbound to D12 GCM, then turn RIGHT via GCM 10 DME Arc and GCM R-080 inbound.
NUBIS	From NUBIS to GUBEL: Via GCM R-260 inbound to GCM, then via GCM R-050 outbound to D8 GCM, then turn RIGHT via GCM 10 DME Arc and GCM R-080 inbound.
RIKEL	From RIKEL to GUBEL: Via GCM R-027 inbound to D12 GCM, then turn LEFT via GCM 10 DME Arc and GCM R-080 inbound.
TEXAM	From TEXAM to GUBEL: Via GCM R-078 inbound to D12 GCM, then turn LEFT to intercept GCM R-080 inbound.
ULISA	From ULISA to GUBEL: Via GCM R-237 inbound to GCM, then via GCM R-050 outbound to D8 GCM, then turn RIGHT via GCM 10 DME Arc and GCM R-080 inbound.

ROUTING

Via GCM R-080 inbound to GUBEL descending to ATC assigned flight level/altitude. Hold at GUBEL  
**MAINTAINING** ATC assigned altitude unless/until cleared by ATC to execute the VOR DME approach procedure to Rwy 26.