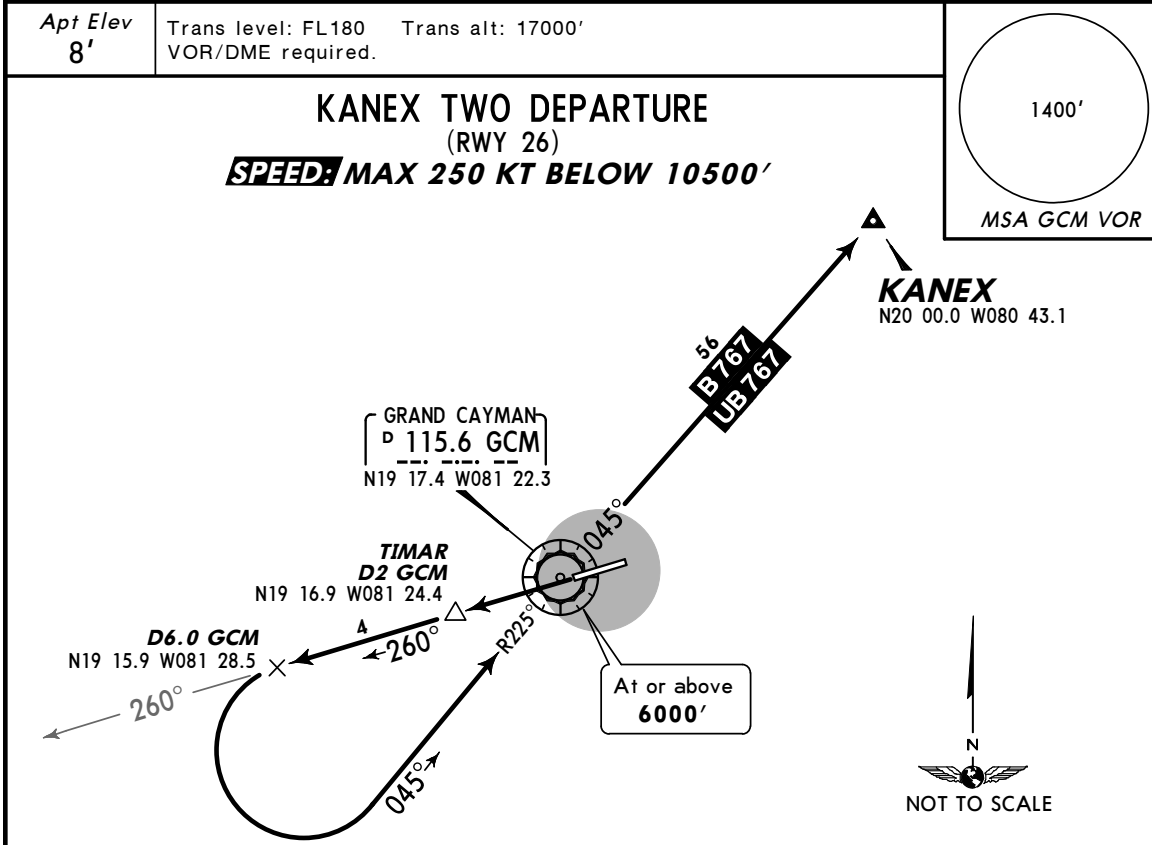


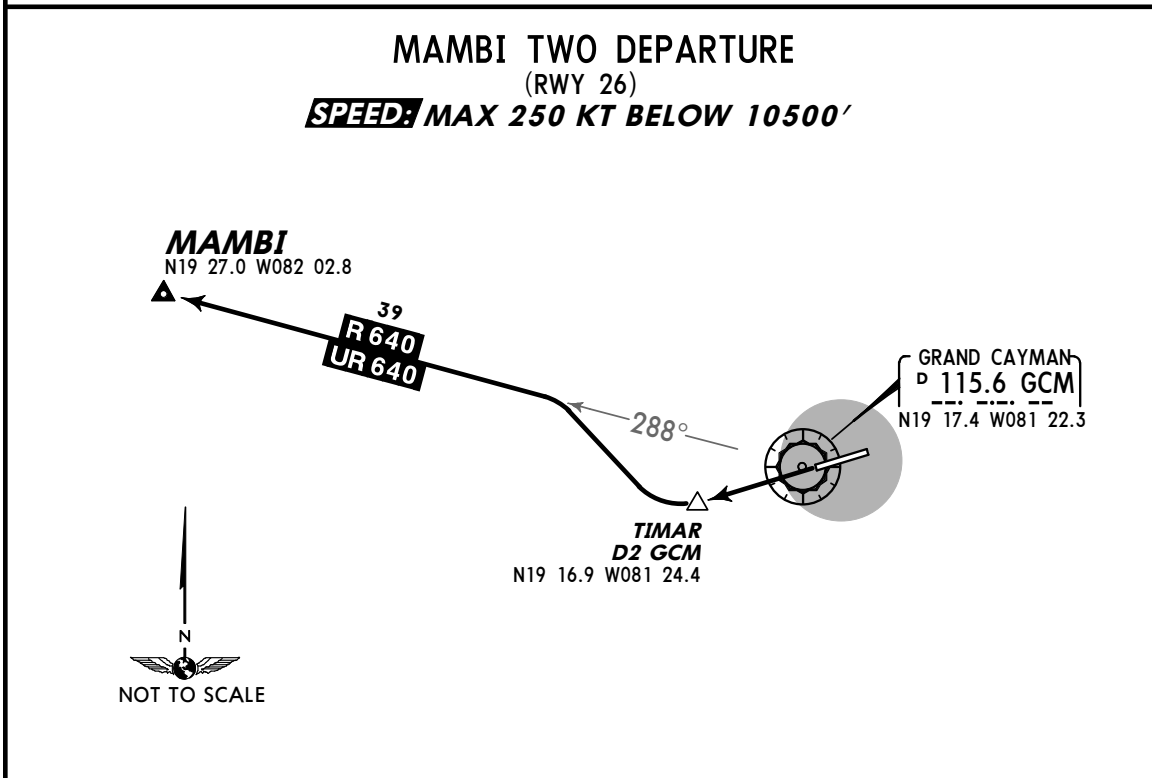
MWCR/GCM  
ROBERTS INTL

JEPPESEN  
8 JAN 10 (10-3E)

GRAND CAYMAN,  
CAYMAN IS  
SID



INITIAL CLIMB	ALTITUDE
Climb on runway heading to TIMAR, then via GCM R-260 to D6.0 GCM, turn LEFT and intercept GCM R-225 inbound to GCM. Intercept B/UB-767 route.	Climb to <b>8000'</b> or flight level/altitude assigned by ATC.



INITIAL CLIMB	ALTITUDE
Climb on runway heading to TIMAR, then turn RIGHT to intercept R/UR-640 route.	Climb to <b>8000'</b> or flight level/altitude assigned by ATC.

CHANGES: None.

© JEPPESEN, 2005, 2010. ALL RIGHTS RESERVED.