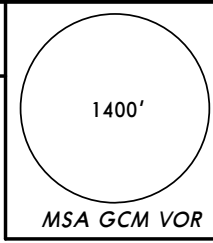


MWCR/GCM
ROBERTS INTL

JEPPESEN
10 MAR 06 (10-3A)

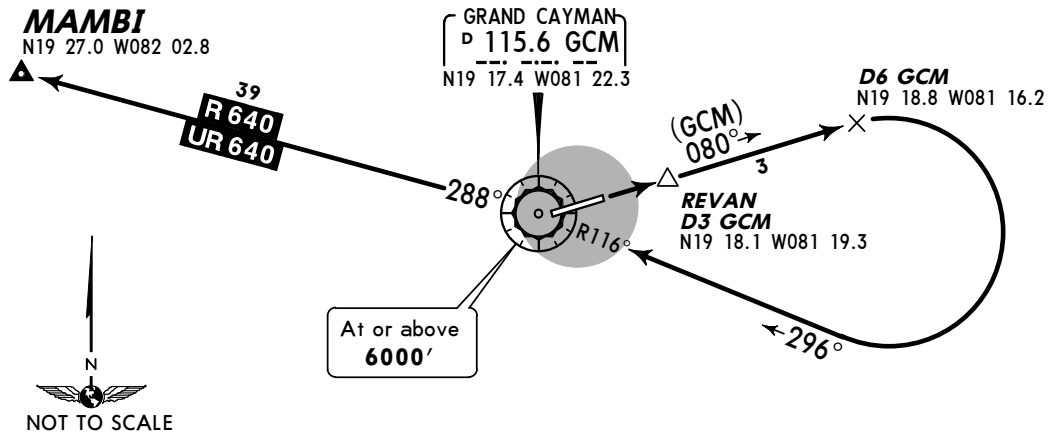
GRAND CAYMAN,
CAYMAN IS
SID

Apt Elev 8' Trans level: FL180 Trans alt: 17000'
VOR/DME required.



MAMBI TWO DEPARTURE
(RWY 08)

SPEED: MAX 250 KT BELOW 10500'



INITIAL CLIMB

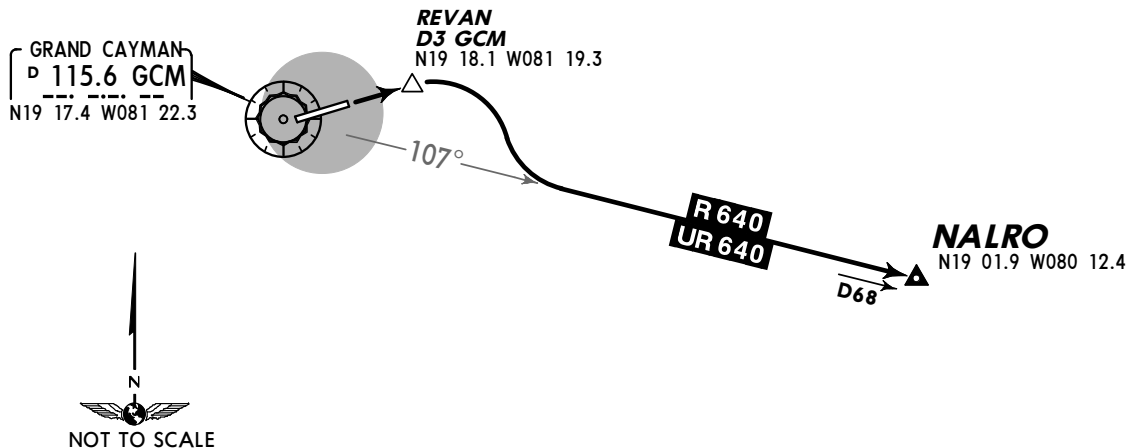
ALTITUDE

Climb on runway heading to REVAN, then via GCM R-080 to D6 GCM, turn RIGHT and intercept GCM R-116 inbound to GCM. Intercept R/UR-640 route.

Climb to **8000'** or flight level/altitude assigned by ATC.

NALRO TWO DEPARTURE
(RWY 08)

SPEED: MAX 250 KT BELOW 10500'



INITIAL CLIMB

ALTITUDE

Climb on runway heading to REVAN, then turn RIGHT to intercept R/UR-640 route.

Climb to **7000'** or flight level/altitude assigned by ATC.