

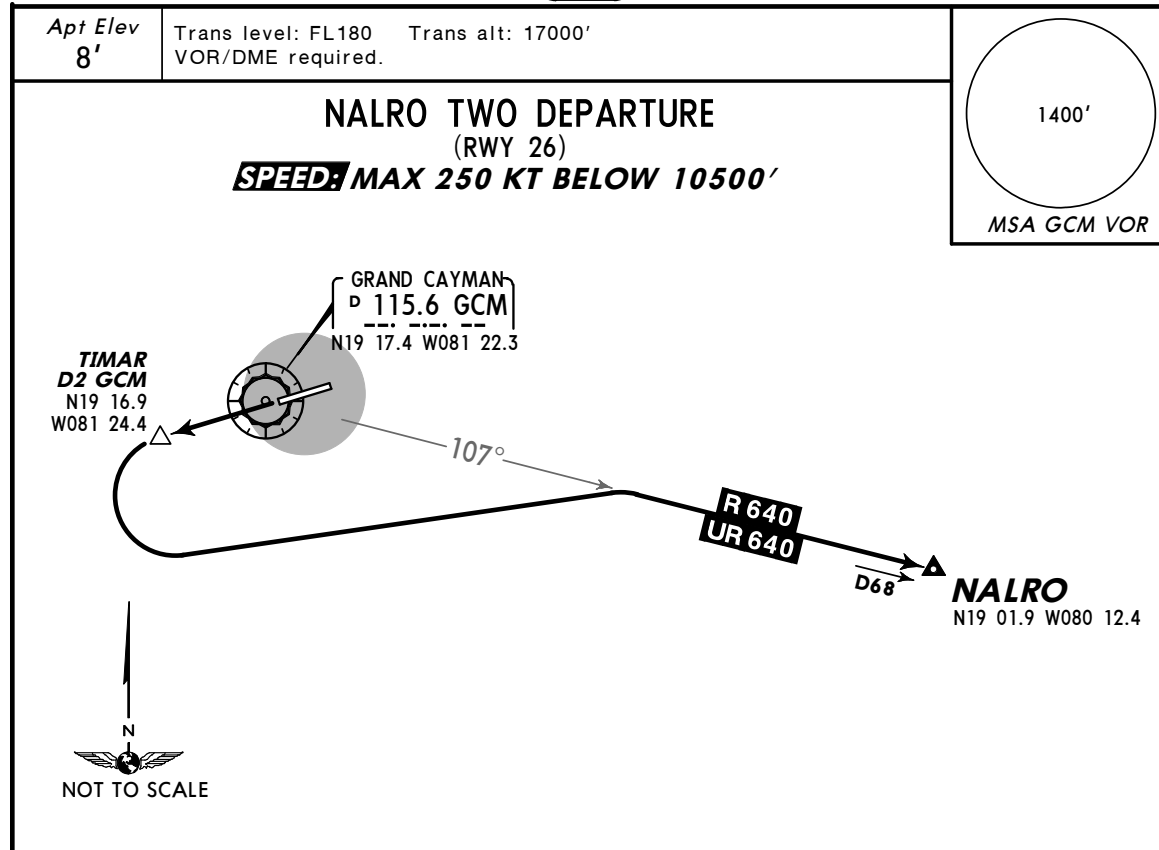
MWCR/GCM  
ROBERTS INTL

JEPPESEN

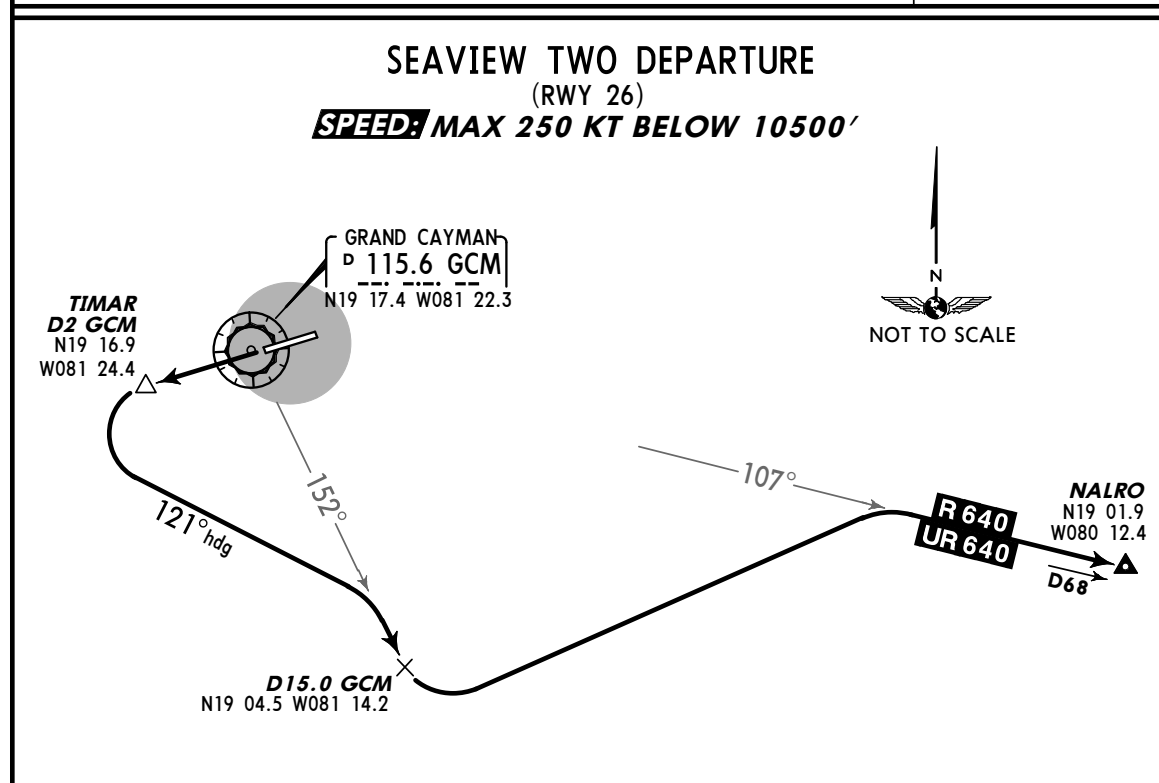
10 MAR 06 (10-3F)

GRAND CAYMAN,  
CAYMAN IS

SID



INITIAL CLIMB	ALTITUDE
Climb on runway heading to TIMAR, then turn LEFT to intercept R/UR-640 route.	Climb to <b>7000'</b> or flight level/altitude assigned by ATC.



INITIAL CLIMB	ALTITUDE
Climb on runway heading to TIMAR, then turn LEFT heading 121° to intercept and proceed on GCM R-152 until D15.0 GCM, then turn LEFT to intercept R/UR-640 route.	Climb to <b>7000'</b> or flight level/altitude assigned by ATC.