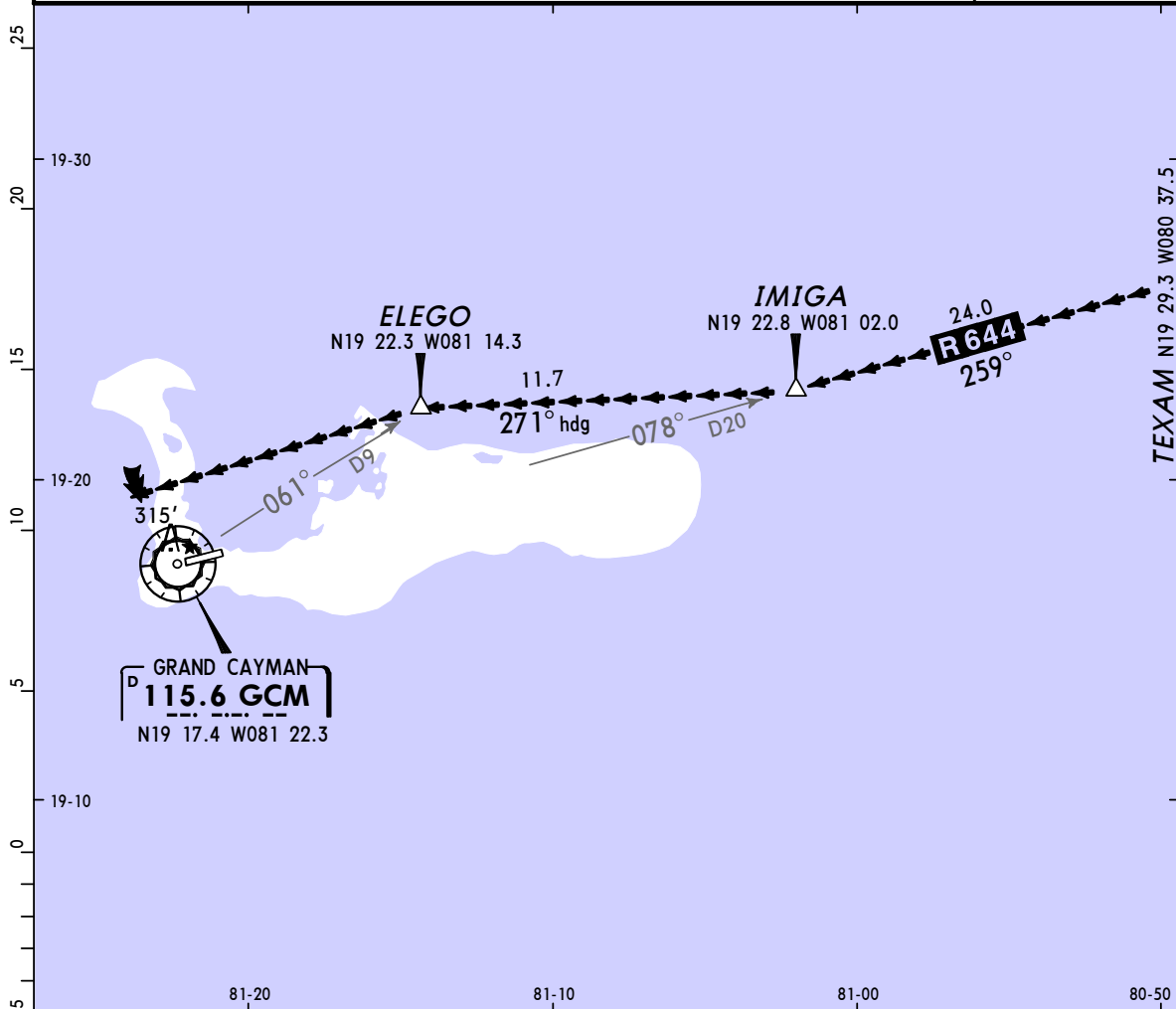


MWCR/GCM
ROBERTS INTL

JEPPESSEN
8 JAN 10 (19-1)

GRAND CAYMAN, CAYMAN IS
NORTH SIDE VISUAL APPROACH-Rwy 08

*ATIS 132.35		*GRAND CAYMAN Approach 120.2		*OWEN ROBERTS Tower 118.0	
NAVAIDS Refer to Planview	Final Apch Crs Refer to Planview	No FAF	No Minimums	Apt Elev 8' Rwy 08 8'	1400'
MISSED APCH: No Missed Approach procedure.					
Alt Set: hPa and INCHES		TDZ Elev: 0 hPa	Trans level: FL 180	Trans alt: 17000'	MSA GCM VOR



NORTH SIDE VISUAL APPROACH

RUNWAY 08

From TEXAM without RNAV:

Via GCM VOR R-078 inbound to IMIGA Int, then turn RIGHT heading 271° to ELEGO Int, then join left downwind Rwy 08.

From TEXAM with RNAV:

Via GCM VOR R-078 inbound to IMIGA Int, then turn RIGHT direct ELEGO Int, then join left downwind Rwy 08.