

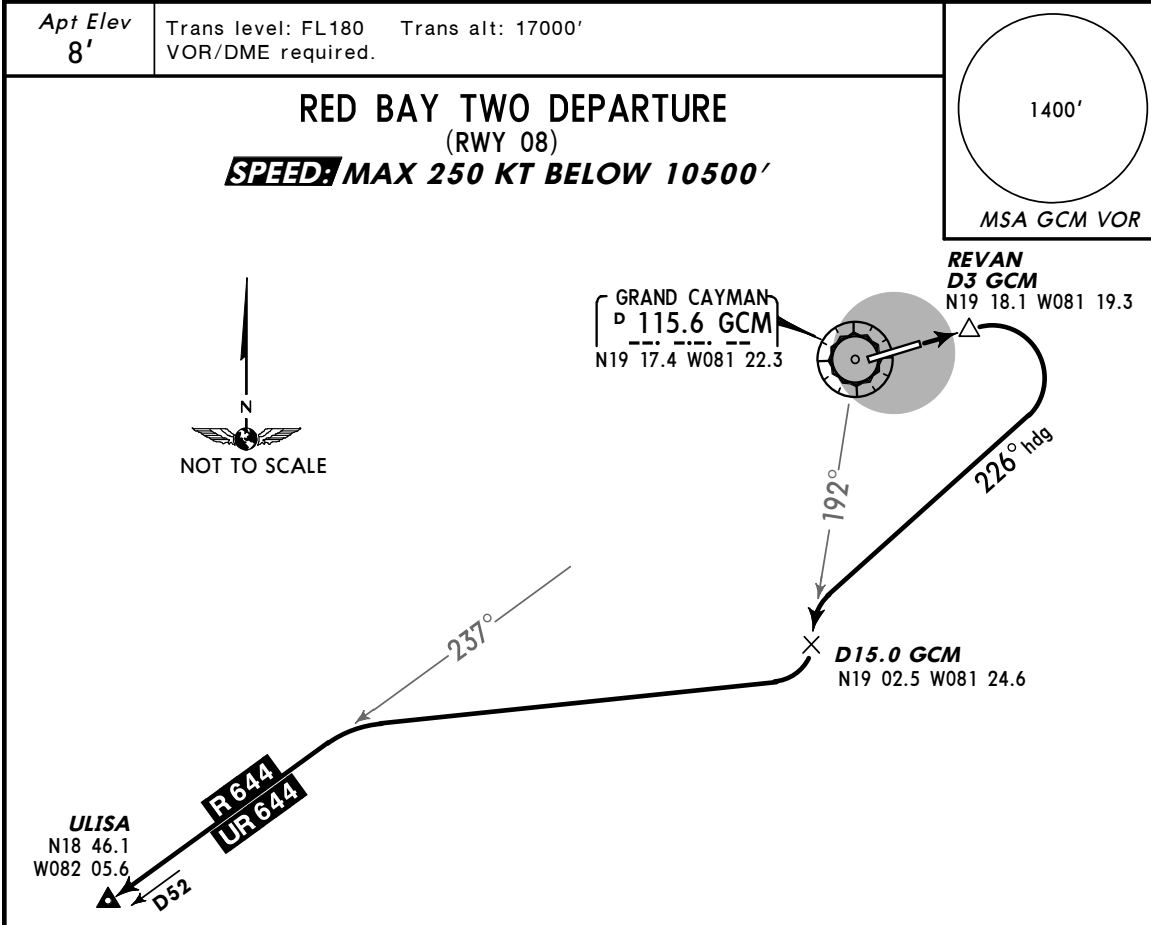
MWCR/GCM
ROBERTS INTL

JEPPESEN

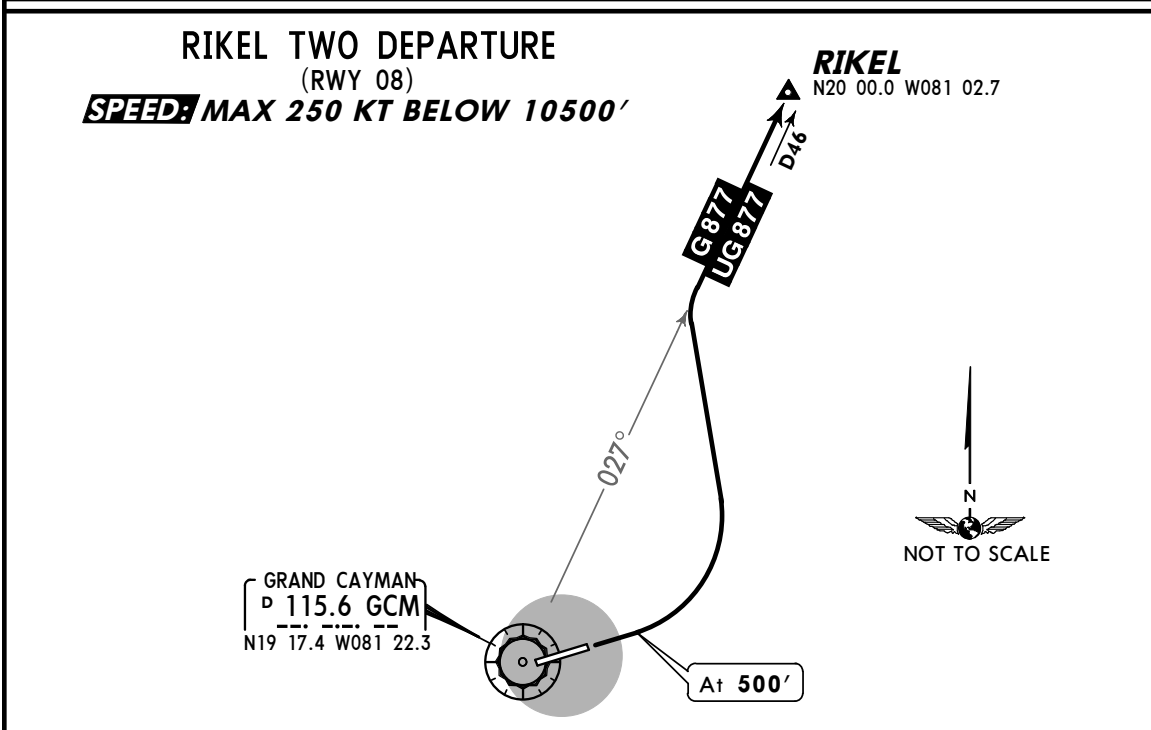
10 MAR 06 (10-3B)

GRAND CAYMAN,
CAYMAN IS

SID



INITIAL CLIMB	ALTITUDE
Climb on runway heading to REVAN, then turn RIGHT heading 226°, intercept and proceed on GCM R-192 until D15.0 GCM, turn RIGHT to intercept R/UR-644 route.	Climb to 8000' or flight level/altitude assigned by ATC.



INITIAL CLIMB	ALTITUDE
Climb on runway heading to 500' , then turn LEFT to intercept G/UG-877 route.	Climb to 8000' or flight level/altitude assigned by ATC.