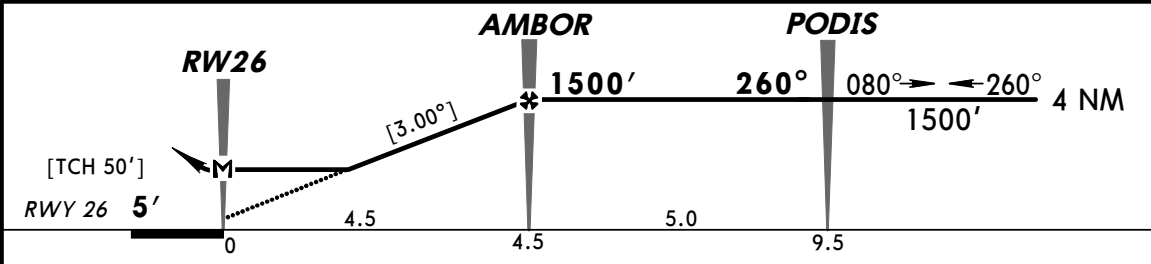
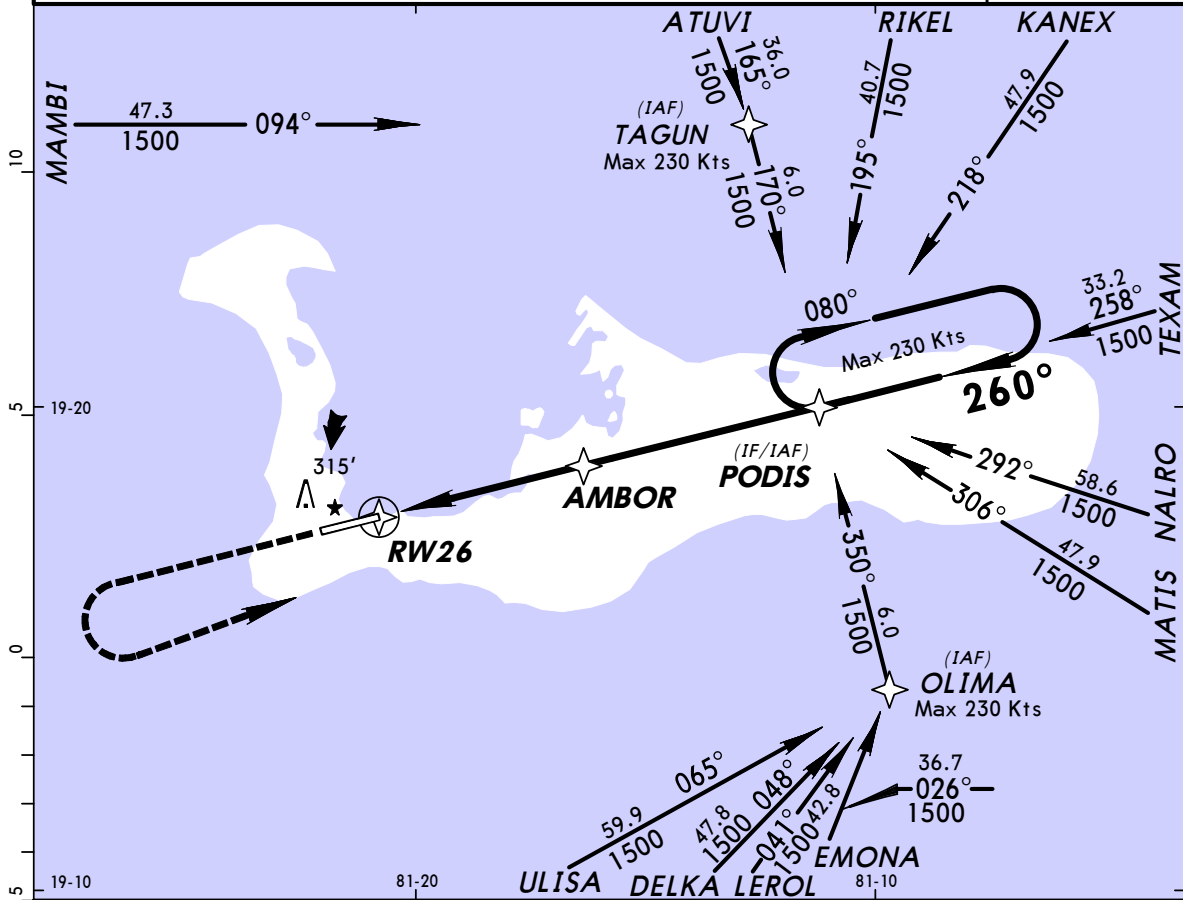


MWCR/GCM
ROBERTS INTL

JEPPESEN
5 FEB 10 (12-2)

GRAND CAYMAN, CAYMAN IS
RNAV (GNSS) Rwy 26

*ATIS 132.35		*GRAND CAYMAN Approach 120.2		*OWEN ROBERTS Tower 118.0	
RNAV	Final Apch Crs 260°	Minimum Alt AMBOR 1500' (1495')	LNAV MDA(H) 390' (385')	Apt Elev 8' Rwy 26 5'	1400' MSA ARP
MISSED APCH: Climb STRAIGHT AHEAD to 1500', turn LEFT direct PODIS and hold.					
Alt Set: hPa and INCHES TDZ Elev: 0 hPa Trans level: FL 180 Trans alt: 17000' 1. IFR and VFR aircraft operations in excess of 250 KIAS below 10500' are not permitted within the Cayman Islands TMA and Owen Roberts CTR.					



Gnd speed-Kts	70	90	100	120	140	160	REIL PAPI-L	1500'	↑	LT	PODIS
Descent Gradient or Descent angle	372	478	531	637	743	849					
MAP at RW26											

STRAIGHT-IN LANDING RWY 26						CIRCLE-TO-LAND					
LNAV						MDA(H)					
MDA(H) 390' (385')						Max Kts					
A						100	610' (602') - 1600m				
B	1600m					135	710' (702') - 3200m				
C						180	710' (702') - 3600m				
D	2000m					205	710' (702') - 3600m				

PANS OPS

CHANGES: Minimums.

© JEPPESEN, 2001, 2010. ALL RIGHTS RESERVED.