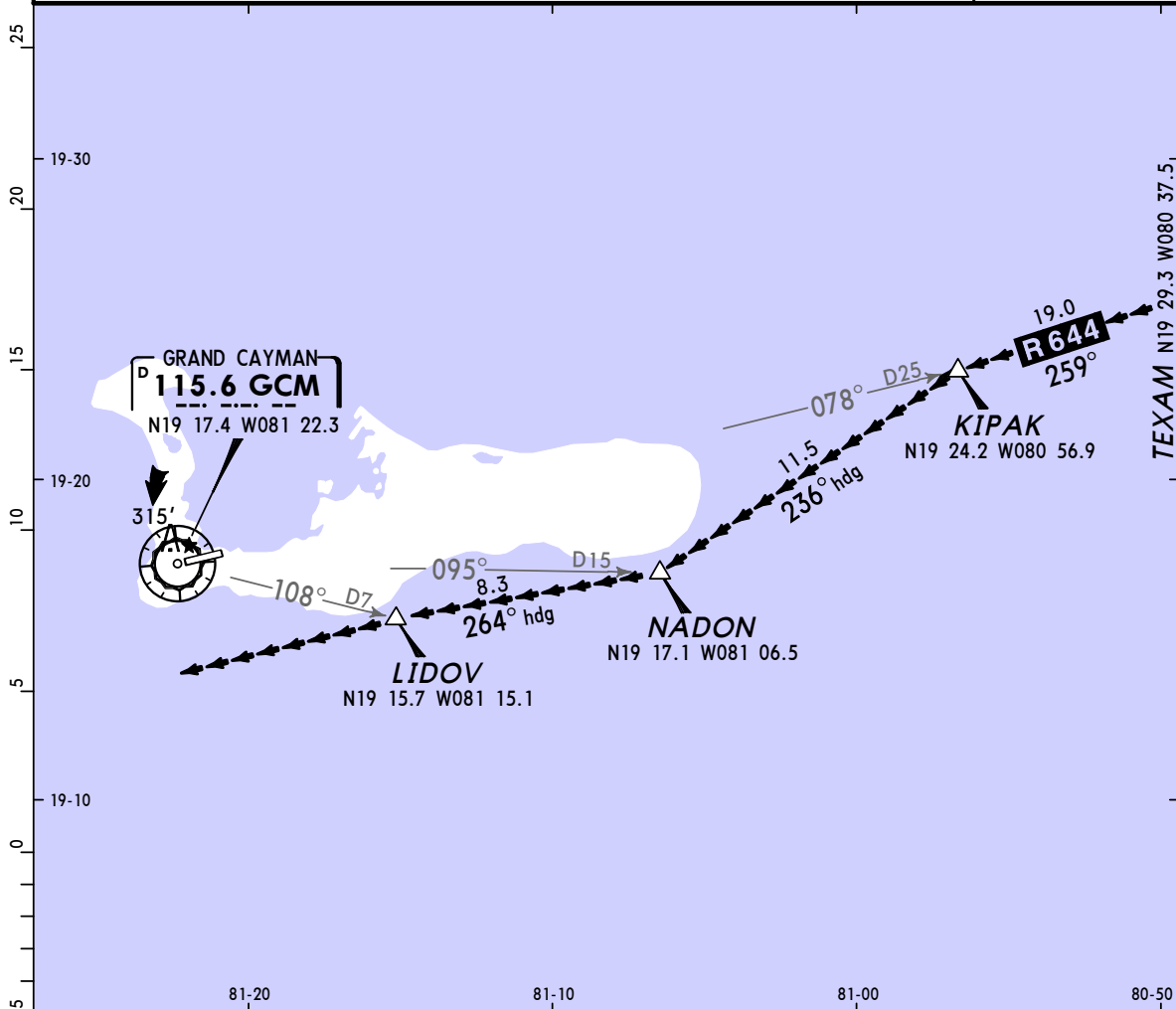


MWCR/GCM
ROBERTS INTL

JEPPESSEN
8 JAN 10 (19-2)

GRAND CAYMAN, CAYMAN IS
SOUTH SIDE VISUAL APPROACH-Rwy 08

*ATIS 132.35		*GRAND CAYMAN Approach 120.2		*OWEN ROBERTS Tower 118.0	
NAVAIDS Refer to Planview	Final Apch Crs Refer to Planview	No FAF	No Minimums	Apt Elev 8' Rwy 08 8'	1400'
MISSED APCH: No Missed Approach procedure.					
Alt Set: hPa and INCHES		TDZ Elev: 0 hPa	Trans level: FL 180	Trans alt: 17000'	MSA GCM VOR



SOUTH SIDE VISUAL APPROACH

RUNWAY 08

From TEXAM without RNAV:

Via GCM VOR R-078 inbound to KIPAK Int, then turn LEFT heading 236° to NADON Int, then turn RIGHT heading 264° to LIDOV Int, then join right downwind Rwy 08.

From TEXAM with RNAV:

Via GCM VOR R-078 inbound to KIPAK Int, then turn LEFT direct NADON Int, then turn RIGHT direct LIDOV Int, then join right downwind Rwy 08.