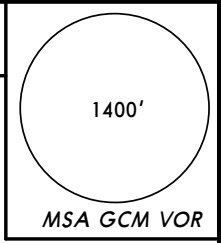


MWCR/GCM  
ROBERTS INTL

JEPPESEN  
10 MAR 06 (10-3C)

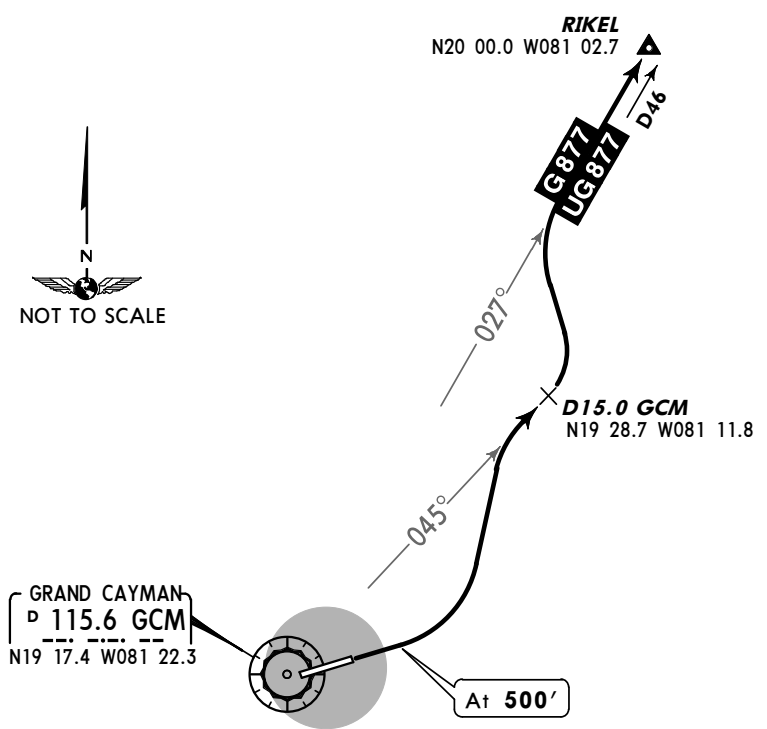
GRAND CAYMAN,  
CAYMAN IS  
SID

Apt Elev 8' Trans level: FL180 Trans alt: 17000'  
VOR/DME required.



**STING RAY TWO DEPARTURE**  
(RWY 08)

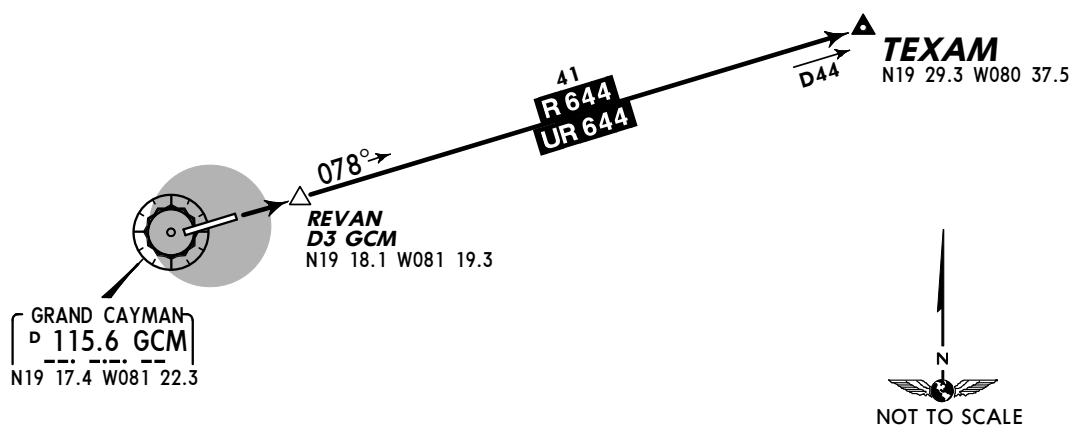
**SPEED: MAX 250 KT BELOW 10500'**



INITIAL CLIMB	ALTITUDE
Climb on runway heading to 500', then turn LEFT to intercept and proceed on GCM R-045 until D15.0 GCM, then turn LEFT to intercept G/UG-877 route.	Climb to 8000' or flight level/altitude assigned by ATC.

**TEXAM TWO DEPARTURE**  
(RWY 08)

**SPEED: MAX 250 KT BELOW 10500'**



INITIAL CLIMB	ALTITUDE
Climb on runway heading to REVAN, then intercept R/UR-644 route.	Climb to 5000' or flight level/altitude assigned by ATC.