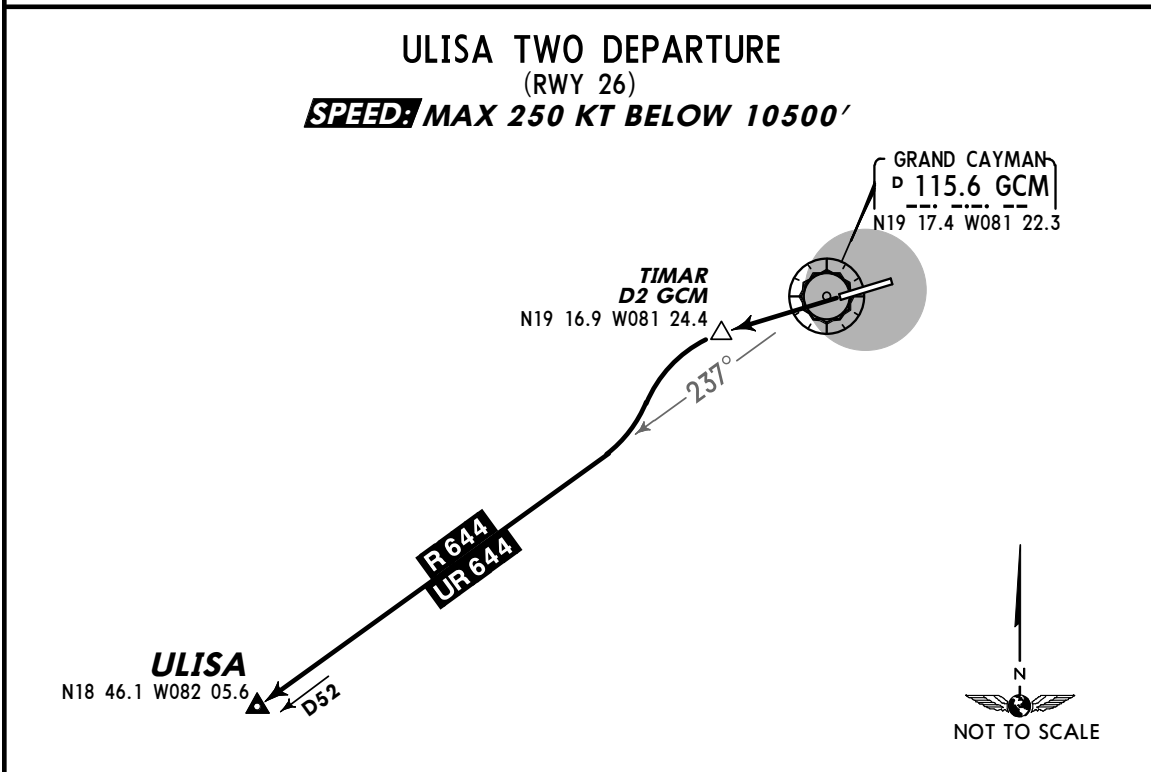


| INITIAL CLIMB | ALTITUDE |
|--|--|
| <p>Climb on runway heading to TIMAR, then via GCM R-260 to D6.0 GCM, turn LEFT and intercept GCM R-225 inbound to GCM. Intercept R/UR-644 route.</p> | <p>Climb to 7000' or flight level/altitude assigned by ATC.</p> |



| INITIAL CLIMB | ALTITUDE |
|--|--|
| <p>Climb on runway heading to TIMAR, then turn LEFT to intercept R/UR-644 route.</p> | <p>Climb to 8000' or flight level/altitude assigned by ATC.</p> |