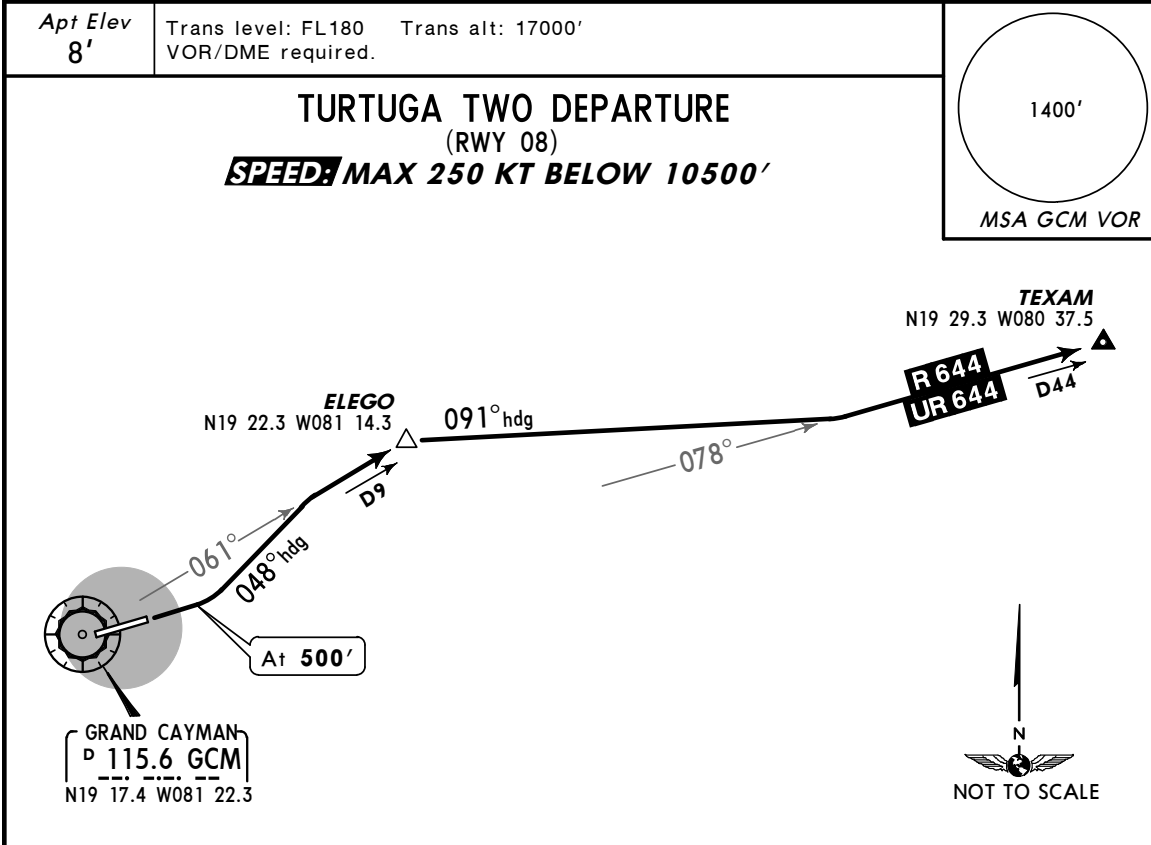


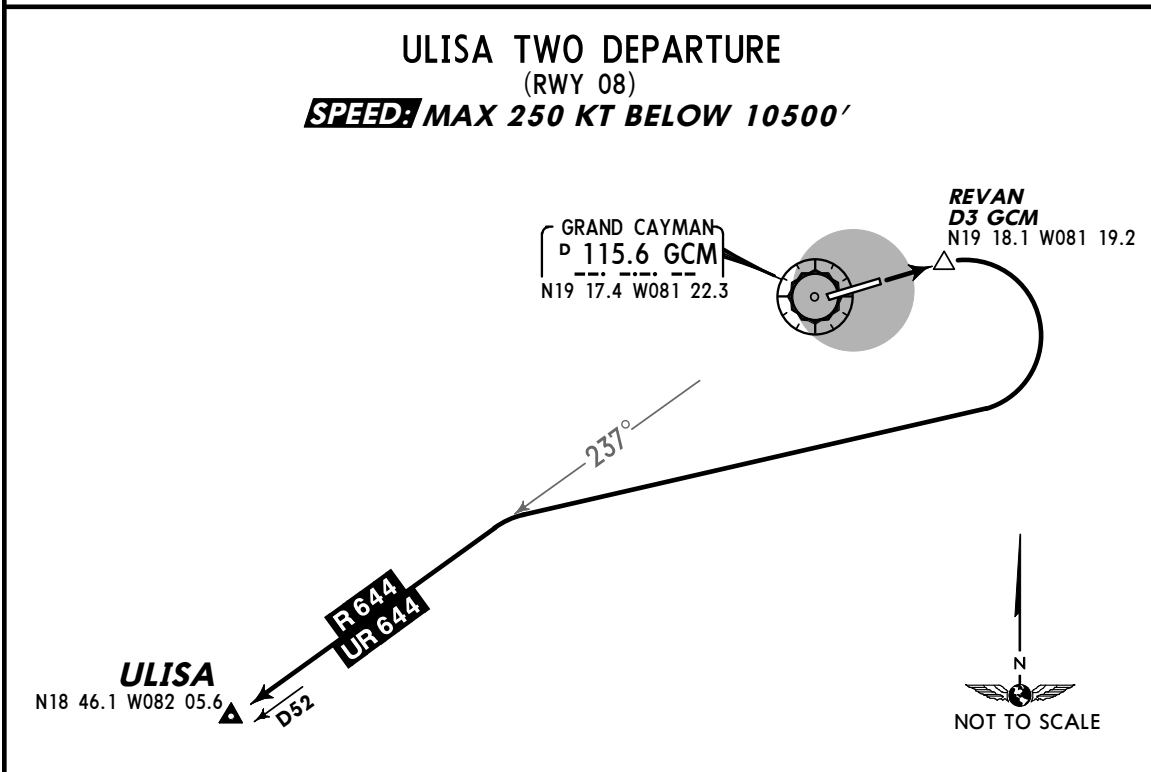
MWCR/GCM
ROBERTS INTL

JEPPESEN
8 JAN 10 (10-3D)

GRAND CAYMAN,
CAYMAN IS
SID



INITIAL CLIMB	ALTITUDE
Climb on runway heading to 500', then turn LEFT heading 048° to intercept and proceed on GCM R-061 to ELEGO. Then turn RIGHT heading 091° to intercept R/UR-644 route.	Climb to 5000' or flight level/altitude assigned by ATC.



INITIAL CLIMB	ALTITUDE
Climb on runway heading to REVAN, then turn RIGHT to intercept R/UR-644 route.	Climb to 8000' or flight level/altitude assigned by ATC.