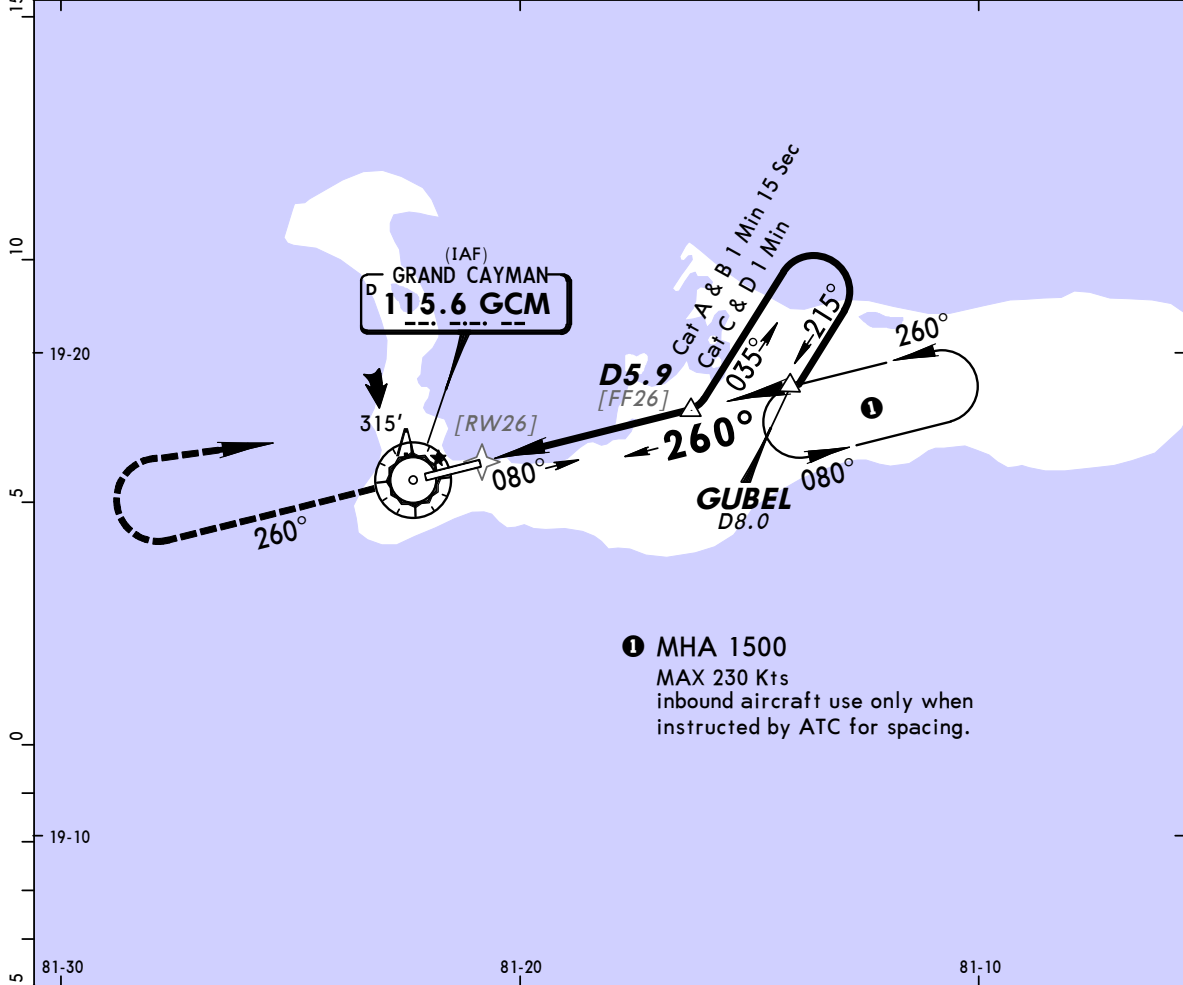


MWCR/GCM
ROBERTS INTL

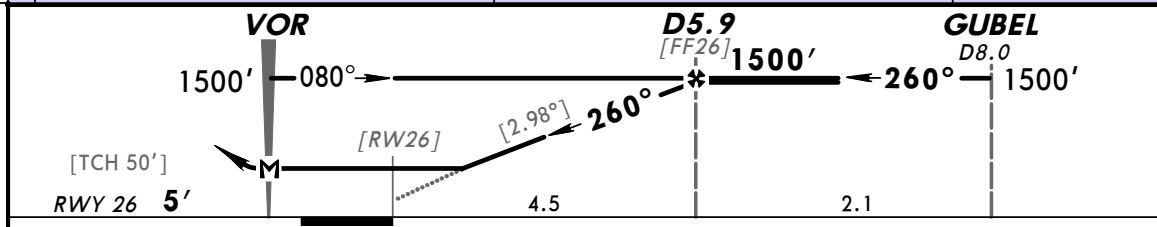
5 FEB 10 **13-2**

JEPPESEN GRAND CAYMAN, CAYMAN IS
VOR DME Rwy 26

*ATIS 132.35		*GRAND CAYMAN Approach 120.2		*OWEN ROBERTS Tower 118.0	
VOR GCM 115.6	Final Apch Crs 260°	Minimum Alt D5.9 1500' (1495')	MDA(H) 520' (515')	Apt Elev 8' Rwy 26 5'	1400' MSA GCM VOR
MISSED APCH: Climb STRAIGHT AHEAD to 1500', turn RIGHT to GUBEL and hold.					
Alt Set: hPa and INCHES TDZ Elev: 0 hPa Trans level: FL 180 Trans alt: 17000' 1. IFR and VFR aircraft operations in excess of 250 KIAS below 10500' are not permitted within the Cayman Islands TMA and Owen Roberts CTR.					



1 MHA 1500
MAX 230 Kts
inbound aircraft use only when instructed by ATC for spacing.



Gnd speed-Kts	70	90	100	120	140	160		REIL	1500'	RT	GUBEL
Descent angle	[2.98°]	369	474	527	633	738	843	PAPI-L	↑		
MAP at VOR											

STRAIGHT-IN LANDING RWY 26			CIRCLE-TO-LAND		
MDA(H) 520' (515')			Max Kts		
A	1600m		100	610' (602') - 1600m	
B	2400m		135	710' (702') - 3200m	
C	2800m		180	710' (702') - 3600m	
D	2800m		205	710' (702') - 3600m	

PANS OPS

CHANGES: Minimums.

© JEPPESEN, 2000, 2010. ALL RIGHTS RESERVED.