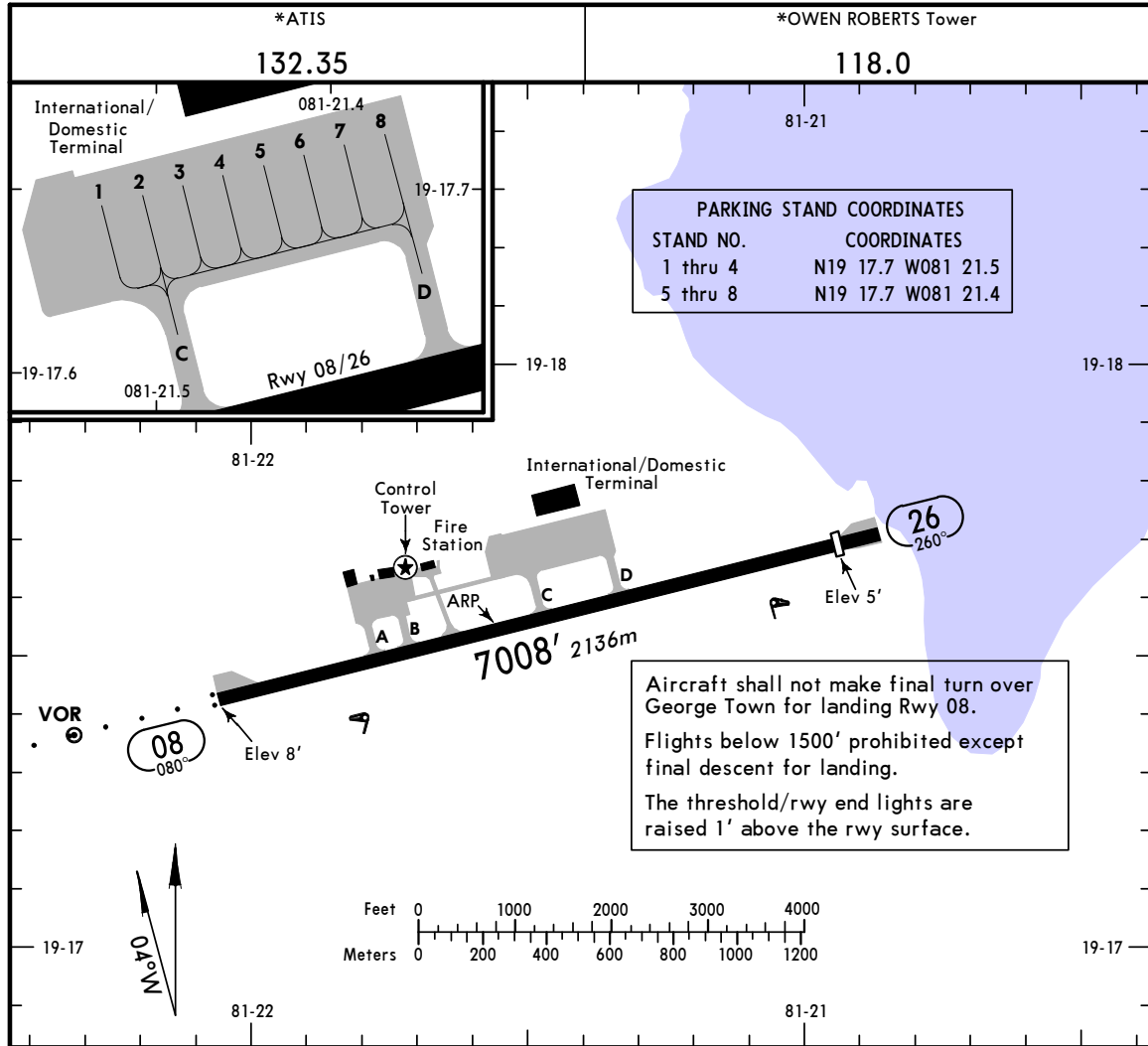


MWCR/GCM

Apt Elev 8'
N19 17.5 W081 21.6

8 JAN 10 **10-9** JEPPESEN GRAND CAYMAN, CAYMAN IS

ROBERTS INTL



ADDITIONAL RUNWAY INFORMATION

RWY	SURFACE	USABLE LENGTHS	WIDTH	
				LANDING BEYOND
		Threshold	Glide Slope	
08	RL ODALS REIL PAPI-L (angle 3.0°) grooved			151'
26	RL REIL PAPI-L (angle 3.0°) grooved	6607' 2014m		46m

TAKE-OFF

	AIR CARRIER		AIR CARRIER (FAR 121)	
	LVP must be in Force All Rwys RCLM (DAY only) or RL	All Rwys RCLM (DAY only) or RL	All Rwys Adequate Vis Ref	
A	250m	400m	2 Eng	400m
B			3 & 4 Eng	
C	300m	400m		400m
D				