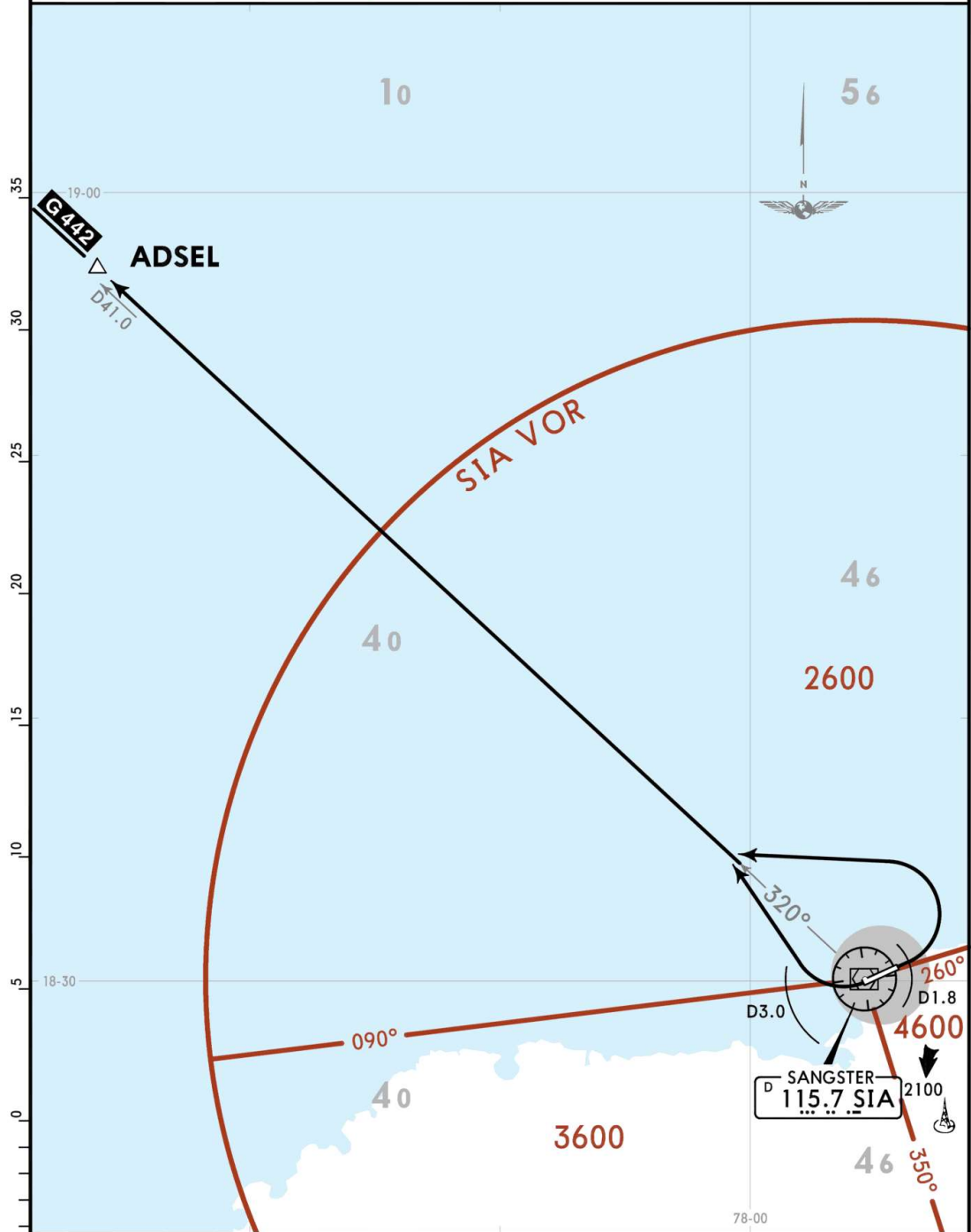


Apt Elev 4	Trans alt: 17000 1. VOR/DME required. 2. WESTBOUND departure via ATS route G-442.
----------------------	---

ADSEL 2 DEPARTURE
[ADSEL2]

SPEED: MAX 250 KT BELOW 10000



RWY	INITIAL CLIMB
07	Climb on runway heading until reaching D1.8 SIA, then turn LEFT.
25	Beyond the end of the runway and within D3.0 SIA turn RIGHT.
ROUTING	
Intercept and proceed outbound via SIA R320 to ADSEL.	

CHANGES: New format. © JEPPESEN, 2020. ALL RIGHTS RESERVED.

Chart linked to Navigraph account chadsani (undefined)