

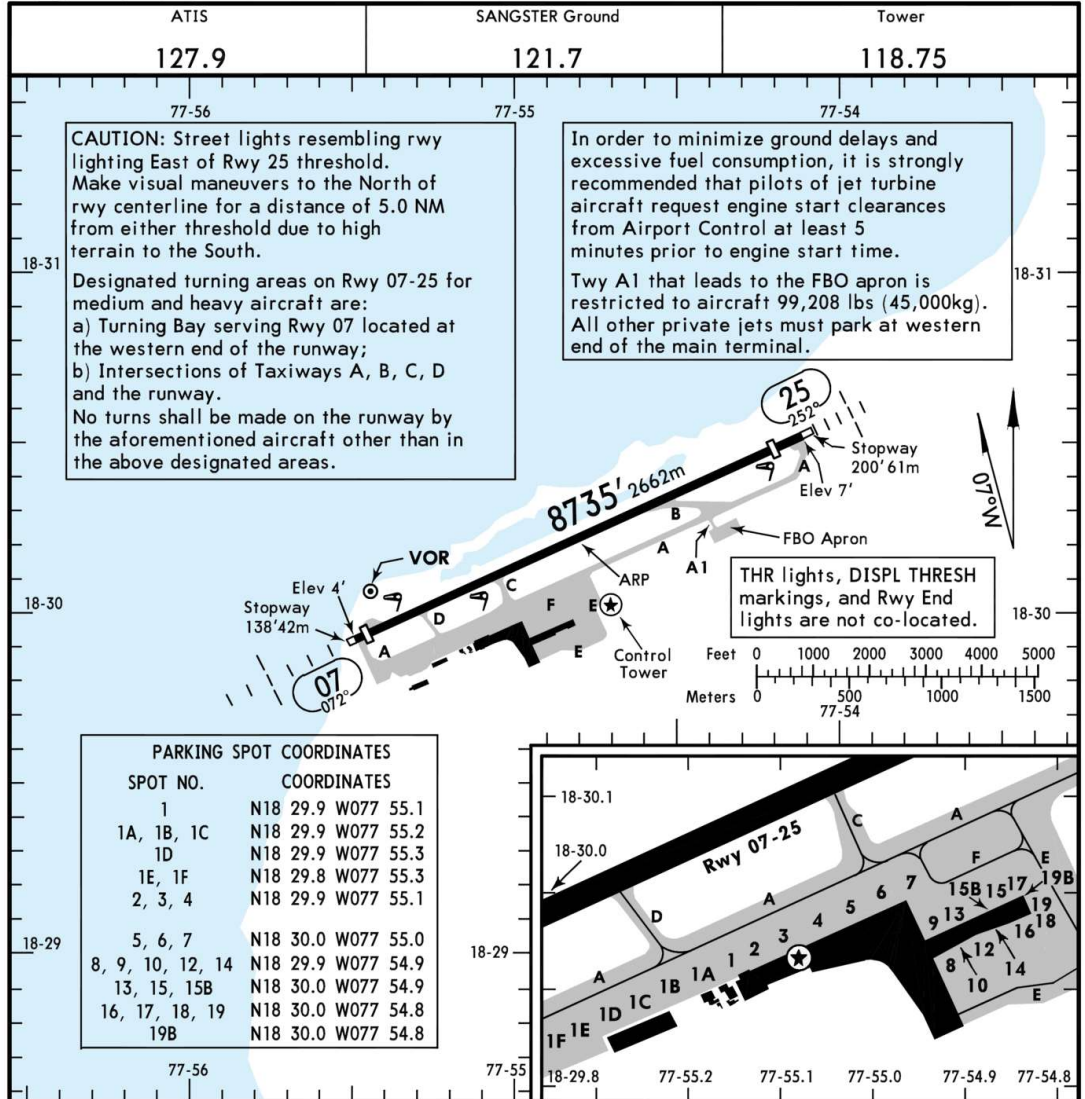
MKJS/MBJ

Apt Elev 4'  
N18 30.2 W077 54.8

JEPPESEN MONTEGO BAY, JAMAICA

27 JUL 18 (10-9)

SANGSTER INTL



ADDITIONAL RUNWAY INFORMATION

| RWY |                               | USABLE LENGTHS |             | TAKE-OFF | WIDTH |
|-----|-------------------------------|----------------|-------------|----------|-------|
|     |                               | Threshold      | Glide Slope |          |       |
| 07  | MIRL ALS PAPI-L (angle 2.95°) | 8504' 2592m    | 7556' 2303m |          | 150'  |
| 25  | MIRL SALS                     | 8174' 2491m    |             |          | 46m   |
|     |                               |                |             |          |       |
|     |                               |                |             |          |       |

| TAKE-OFF  |        |  |
|-----------|--------|--|
| All Rwys  |        |  |
| 1 & 2 Eng | 1.9 km |  |
| 3 & 4 Eng | 926m   |  |

CHANGES: Apt elev, Mag Var, Rwy 25 PAPI removed.

© JEPPESEN, 2001, 2018. ALL RIGHTS RESERVED.

NAVIGRAPH CHARTS INTENDED FOR FLIGHT SIMULATION ONLY - NOT FOR NAVIGATIONAL USE

Chart linked to Navigraph account chadsani (undefined)