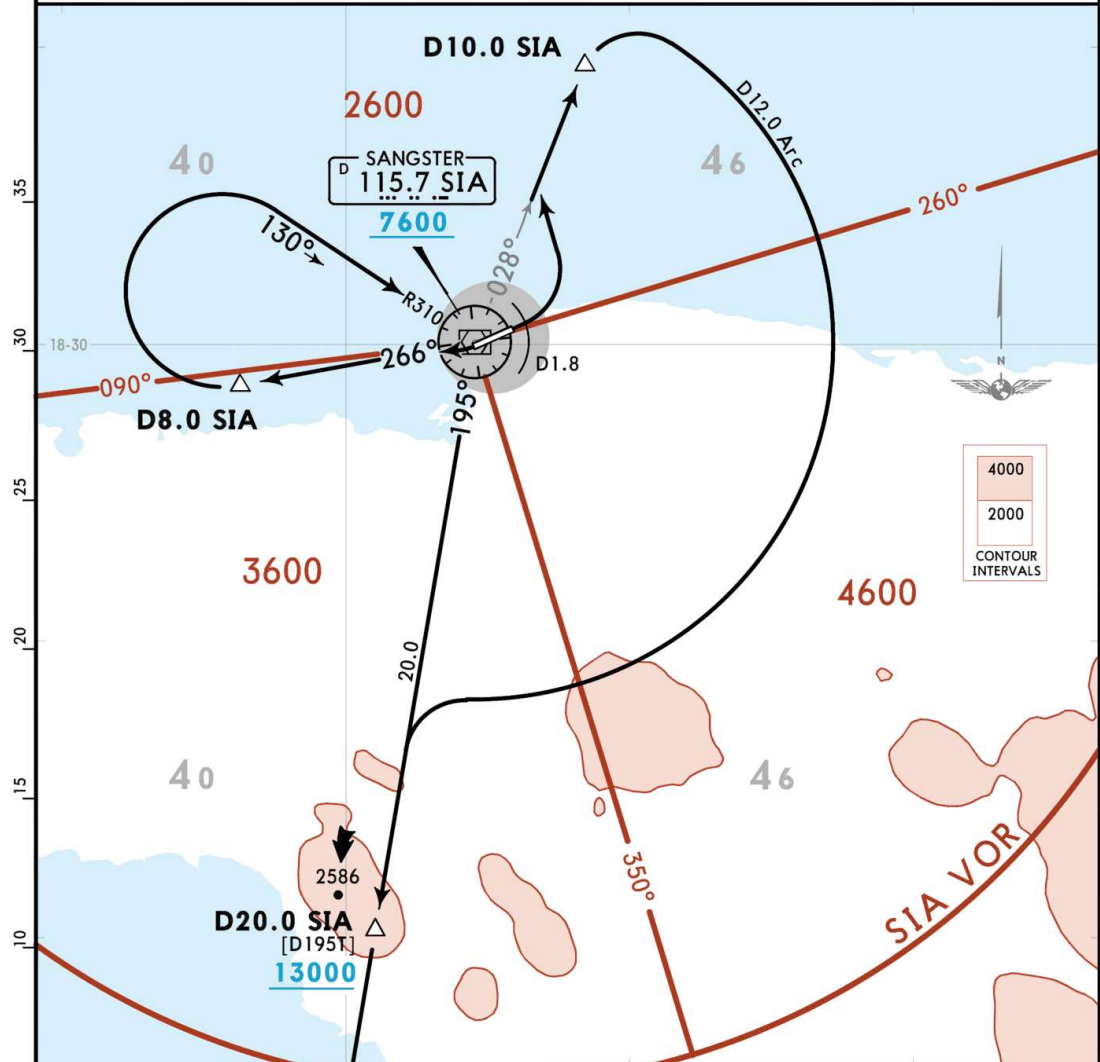


Apt Elev 4
Trans alt: 17000
1. VOR/DME required.
2. SOUTHBOUND departure via ATS route M-542.
3. For aircraft climbing to 13000 or above.

BOSOM 7 DEPARTURE
[BOSOM7]

SPEED: MAX 250 KT BELOW 10000



This SID requires minimum climb gradients of:
Rwy 07: 4.0% (245 per NM) to 13000.
Rwy 25: 4.5% (271 per NM) to 13000.

Gnd speed-KT	75	100	150	200	250	300
4.0% V/V (fpm)	304	405	608	810	1013	1215
4.5% V/V (fpm)	342	456	684	911	1139	1367

RWY	INITIAL CLIMB
07	Climb on runway heading until reaching D1.8 SIA, then turn LEFT to intercept and proceed via SIA R028 outbound to D10.0 SIA, then turn RIGHT and proceed via D12.0 Arc SIA to intercept and proceed via SIA R195 outbound to BOSOM. Cross D20.0 SIA R195 at or above 13000.
25	After takeoff, turn RIGHT and climb on SIA R266 to D8.0 SIA. Turn RIGHT and proceed inbound via SIA R310 to SIA VOR. Cross SIA VOR at or above 7600. Intercept and proceed outbound via SIA R195 to BOSOM. Cross D20.0 SIA R195 at or above 13000.

CHANGES: New format.

© JEPPESEN, 2020. ALL RIGHTS RESERVED.

Chart linked to Navigraph account chadsani (undefined)