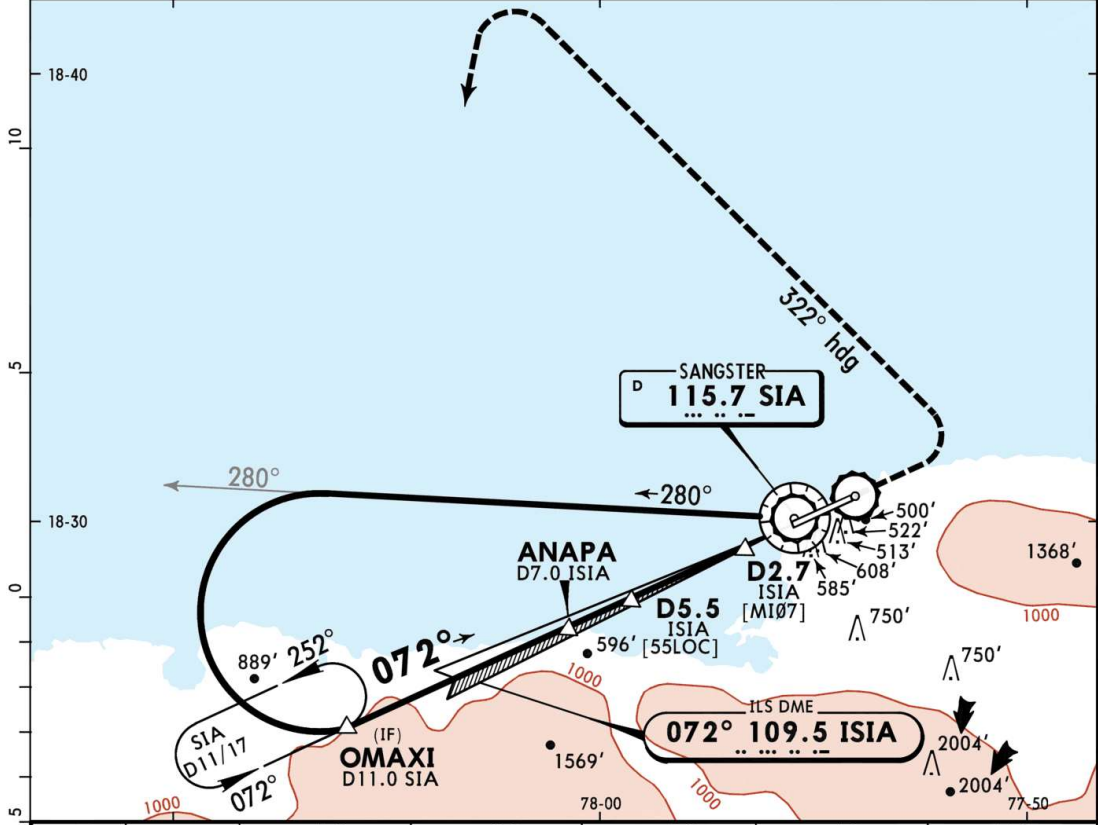


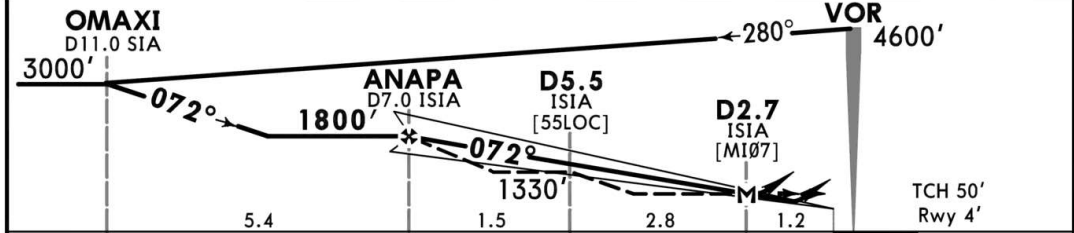
MKJS/MBJ
SANGSTER INTL

JEPPESEN MONTEGO BAY, JAMAICA
29 NOV 19 (11-1) Eff 5 Dec ILS DME Rwy 07

ATIS 127.9		SANGSTER Approach 120.8		SANGSTER Tower 118.75		Ground 121.7		
LOC ISIA 109.5	Final Apch Crs 072°	ANAPA 1800' (1796')		ILS DA(H) 304' (300')	Apt Elev 4'	Rwy 4'		
MISSED APCH: At the missed approach point, climb 800'; then turn LEFT heading 322°, climbing to 3000' to 13 NM from the MKJS ARP; then direct to OMAXI and hold. Contact approach 120.8. If unable, request vectors from ATC to OMAXI and hold.								
Alt Set: hPa (IN on req) Rwy Elev: 0 hPa Trans level: FL 180 Trans alt: 17000'							MSA SIA VOR	



LOC (GS out)	ISIA DME	7.0	6.0	5.0	4.0	3.0
ALTITUDE		1806'	1487'	1169'	850'	532'



Gnd speed-Kts	70	90	100	120	140	160	SALS PAPI	800'	← LT	322° hdg
Descent Angle 3.00°	372	478	531	637	743	849				
MAP at D2.7 or ANAPA to MAP	4.3	3:41	2:52	2:35	2:09	1:51				

STRAIGHT-IN LANDING RWY 07				CIRCLE-TO-LAND		
ILS		LOC (GS out)		Not Authorized South of Extended Rwy Centerline		
DA(H) 304' (300')		MDA(H) A,B: 580' (576') C,D: 600' (596')				
FULL		ALS out		Max Kts	MDA(H)	
A	1.3 km		1.9 km		100	900' (896') -1.9 km
B			2.4 km		135	900' (896') -2.8 km
C			3.0 km		180	1000' (996') -3.7 km
D					205	1000' (996') -4.6 km

CHANGES: Missed approach. © JEPPESEN, 2017, 2019. ALL RIGHTS RESERVED.

NAVIGRAPH CHARTS INTENDED FOR FLIGHT SIMULATION ONLY - NOT FOR NAVIGATIONAL USE

Chart linked to Navigraph account chadsani (undefined)