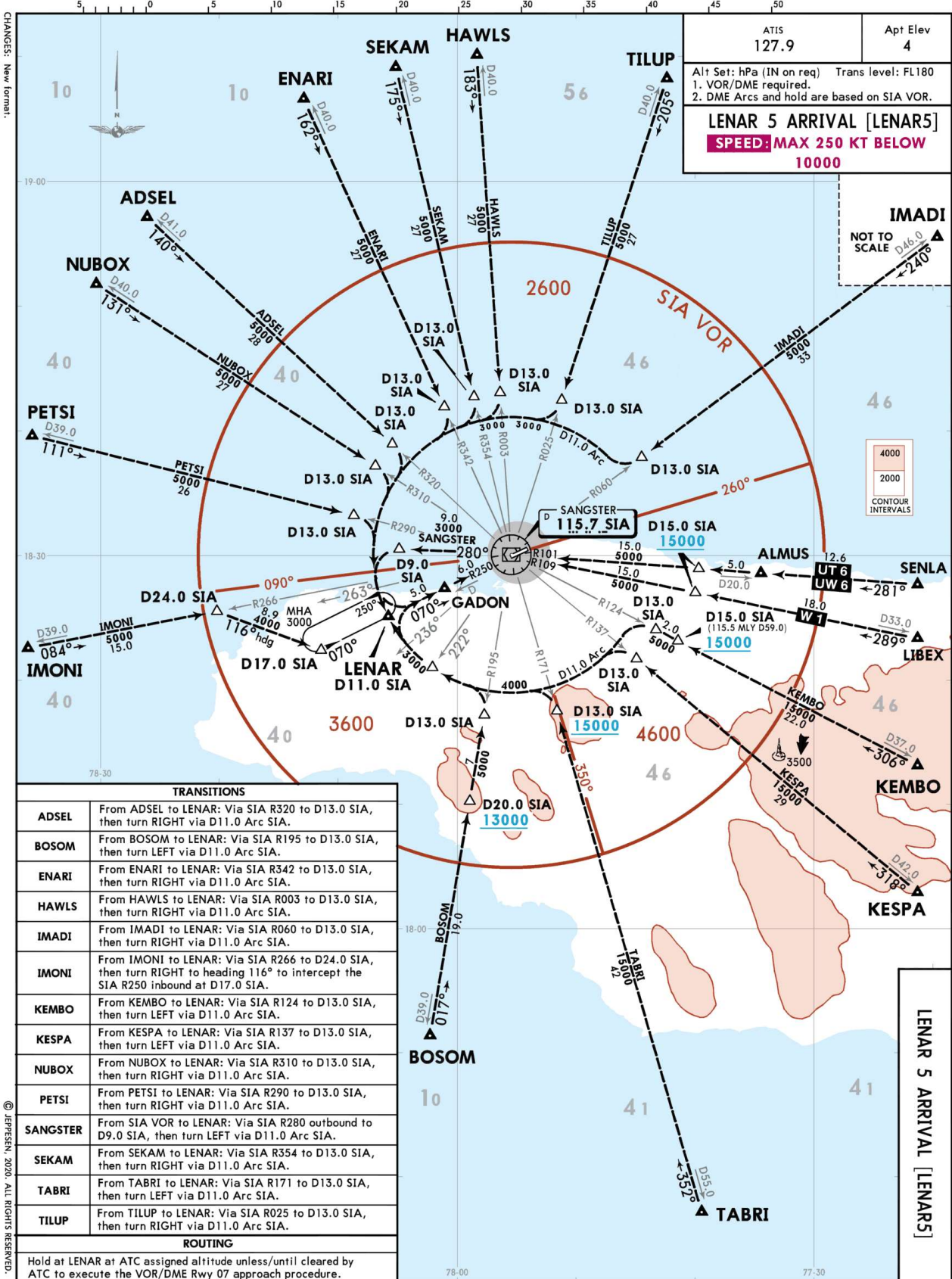


CHANGES: New format.



6 MAR 20 10-2
JEPPESEN
MONTEGO BAY, JAMAICA
STAR

TRANSITIONS	
ADSEL	From ADSEL to LENAR: Via SIA R320 to D13.0 SIA, then turn RIGHT via D11.0 Arc SIA.
BOSOM	From BOSOM to LENAR: Via SIA R195 to D13.0 SIA, then turn LEFT via D11.0 Arc SIA.
ENARI	From ENARI to LENAR: Via SIA R342 to D13.0 SIA, then turn RIGHT via D11.0 Arc SIA.
HAWLS	From HAWLS to LENAR: Via SIA R003 to D13.0 SIA, then turn RIGHT via D11.0 Arc SIA.
IMADI	From IMADI to LENAR: Via SIA R060 to D13.0 SIA, then turn RIGHT via D11.0 Arc SIA.
IMONI	From IMONI to LENAR: Via SIA R266 to D24.0 SIA, then turn RIGHT to heading 116° to intercept the SIA R250 inbound at D17.0 SIA.
KEMBO	From KEMBO to LENAR: Via SIA R124 to D13.0 SIA, then turn LEFT via D11.0 Arc SIA.
KESPA	From KESPA to LENAR: Via SIA R137 to D13.0 SIA, then turn LEFT via D11.0 Arc SIA.
NUBOX	From NUBOX to LENAR: Via SIA R310 to D13.0 SIA, then turn RIGHT via D11.0 Arc SIA.
PETSI	From PETSI to LENAR: Via SIA R290 to D13.0 SIA, then turn RIGHT via D11.0 Arc SIA.
SANGSTER	From SIA VOR to LENAR: Via SIA R280 outbound to D9.0 SIA, then turn LEFT via D11.0 Arc SIA.
SEKAM	From SEKAM to LENAR: Via SIA R354 to D13.0 SIA, then turn RIGHT via D11.0 Arc SIA.
TABRI	From TABRI to LENAR: Via SIA R171 to D13.0 SIA, then turn LEFT via D11.0 Arc SIA.
TILUP	From TILUP to LENAR: Via SIA R025 to D13.0 SIA, then turn RIGHT via D11.0 Arc SIA.
ROUTING	
Hold at LENAR at ATC assigned altitude unless/until cleared by ATC to execute the VOR/DME Rwy 07 approach procedure.	

Chart linked to Navigraph account chadsani (undefined)