

NOISE ABATEMENT PROCEDURES

YEAR AROUND LT plus 5 HOURS = UTC(Z)

APPLICABILITY

- (a) Piston engined aircraft of A.U.W. of more than 5670 kg/12,500 lbs.
- (b) All turbined powered aircraft.
- (c) All IFR Departures.

Jet turbine operations restricted to periods 1200 - 0500 UTC daily and additionally on Saturdays between 0500 - 1200 UTC, unless operating on late schedule.

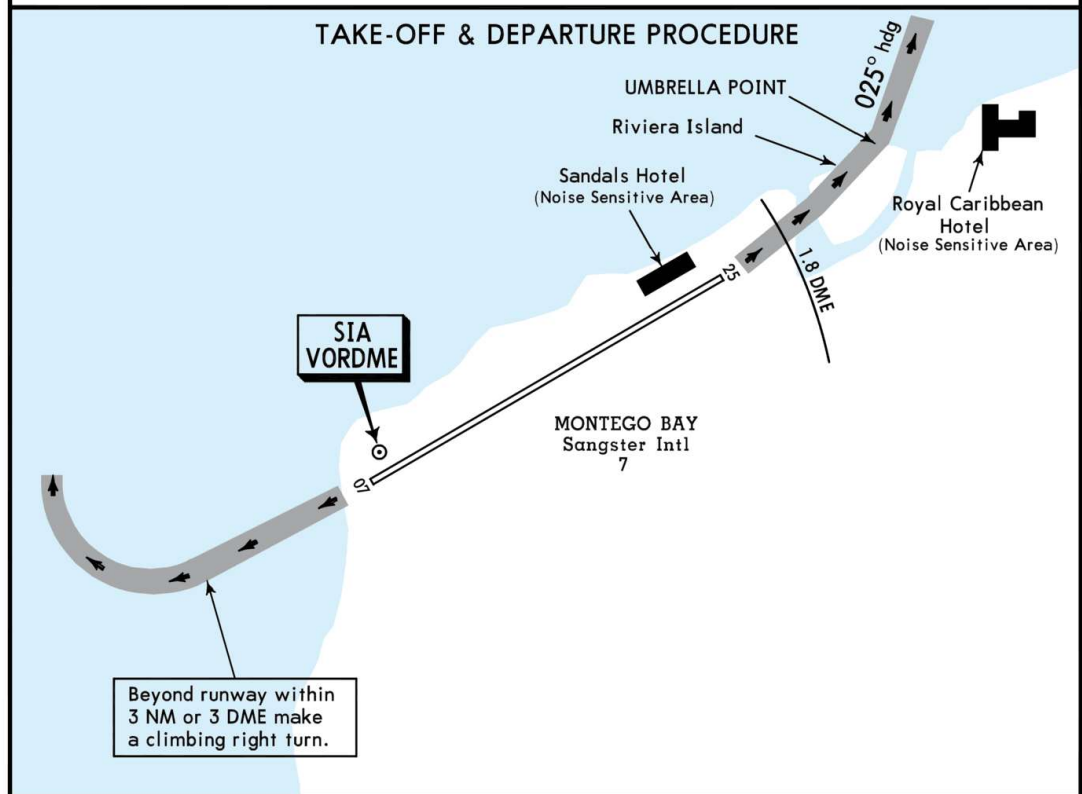
**NOTE:** These noise abatement procedures have been incorporated into the SIDs. Establishment of noise sensitive area (Round Hill Hotel) between 6 NM and 4.5 NM final runway 07. When possible, pilots are encouraged to employ noise reduction techniques within this area especially between 0200 UTC and 1100 UTC.

TAKE-OFF PROCEDURES

- (a) Aircraft With DME Operating  
**RWY 07:** At SANGSTER 1.8 DME on runway heading make a climbing LEFT turn. Thence.  
**RWY 25:** Beyond the end of runway and within SANGSTER 3 DME, make a climbing RIGHT turn. Thence
- (b) Aircraft Without DME Operating  
**RWY 07:** At the end of runway, make a climbing LEFT turn direct to UMBRELLA POINT. Thence  
**RWY 25:** Beyond the end of runway and within 3 NM, make a climbing RIGHT turn. Thence.

DEPARTURE PROCEDURES

- (a) VFR Departures  
 Turn to a 025° heading climbing to minimum 3000' AMSL before flying over built-up areas.
- (b) IFR Departures  
 Proceed in accordance with ATC instructions.



CHANGES: Jet turbine operations restriction note.

© JEPPESEN, 1991, 2016. ALL RIGHTS RESERVED.

NAVIGRAPH CHARTS INTENDED FOR FLIGHT SIMULATION ONLY - NOT FOR NAVIGATIONAL USE

Chart linked to Navigraph account chadsani (undefined)