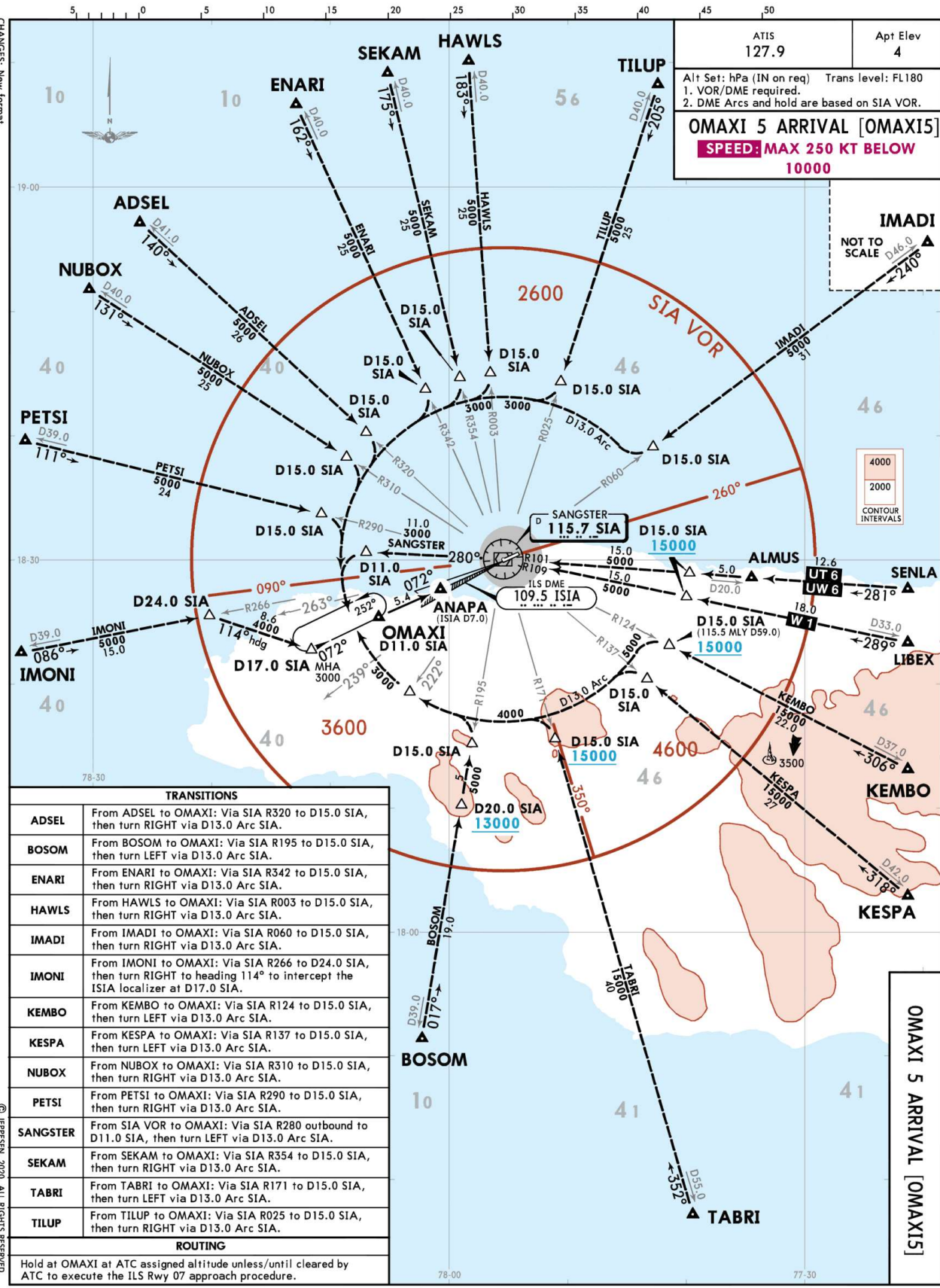


CHANGES: New format.



ATIS 127.9	Apt Elev 4
Alt Set: hPa (IN on req) Trans level: FL180	
1. VOR/DME required.	
2. DME Arcs and hold are based on SIA VOR.	
OMAXI 5 ARRIVAL [OMAX15]	
SPEED: MAX 250 KT BELOW 10000	

TRANSITIONS	
ADSEL	From ADSEL to OMAXI: Via SIA R320 to D15.0 SIA, then turn RIGHT via D13.0 Arc SIA.
BOSOM	From BOSOM to OMAXI: Via SIA R195 to D15.0 SIA, then turn LEFT via D13.0 Arc SIA.
ENARI	From ENARI to OMAXI: Via SIA R342 to D15.0 SIA, then turn RIGHT via D13.0 Arc SIA.
HAWLS	From HAWLS to OMAXI: Via SIA R003 to D15.0 SIA, then turn RIGHT via D13.0 Arc SIA.
IMADI	From IMADI to OMAXI: Via SIA R060 to D15.0 SIA, then turn RIGHT via D13.0 Arc SIA.
IMONI	From IMONI to OMAXI: Via SIA R266 to D24.0 SIA, then turn RIGHT to heading 114° to intercept the ISIA localizer at D17.0 SIA.
KEMBO	From KEMBO to OMAXI: Via SIA R124 to D15.0 SIA, then turn LEFT via D13.0 Arc SIA.
KESPA	From KESPA to OMAXI: Via SIA R137 to D15.0 SIA, then turn LEFT via D13.0 Arc SIA.
NUBOX	From NUBOX to OMAXI: Via SIA R310 to D15.0 SIA, then turn RIGHT via D13.0 Arc SIA.
PETSI	From PETSI to OMAXI: Via SIA R290 to D15.0 SIA, then turn RIGHT via D13.0 Arc SIA.
SANGSTER	From SIA VOR to OMAXI: Via SIA R280 outbound to D11.0 SIA, then turn LEFT via D13.0 Arc SIA.
SEKAM	From SEKAM to OMAXI: Via SIA R354 to D15.0 SIA, then turn RIGHT via D13.0 Arc SIA.
TABRI	From TABRI to OMAXI: Via SIA R171 to D15.0 SIA, then turn LEFT via D13.0 Arc SIA.
TILUP	From TILUP to OMAXI: Via SIA R025 to D15.0 SIA, then turn RIGHT via D13.0 Arc SIA.

ROUTING	
Hold at OMAXI at ATC assigned altitude unless/until cleared by ATC to execute the ILS Rwy 07 approach procedure.	

NOT TO SCALE

4000
2000
CONTOUR INTERVALS

MKSJ/MBJ
SANGSTER INTL

6 MAR 20 (10-2A)

JEPPESEN MONTEGO BAY, JAMAICA

STAR

OMAXI 5 ARRIVAL [OMAX15]

Chart linked to Navigraph account chadsani (undefined)