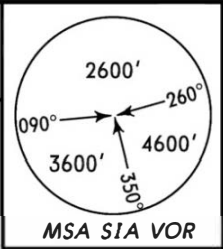
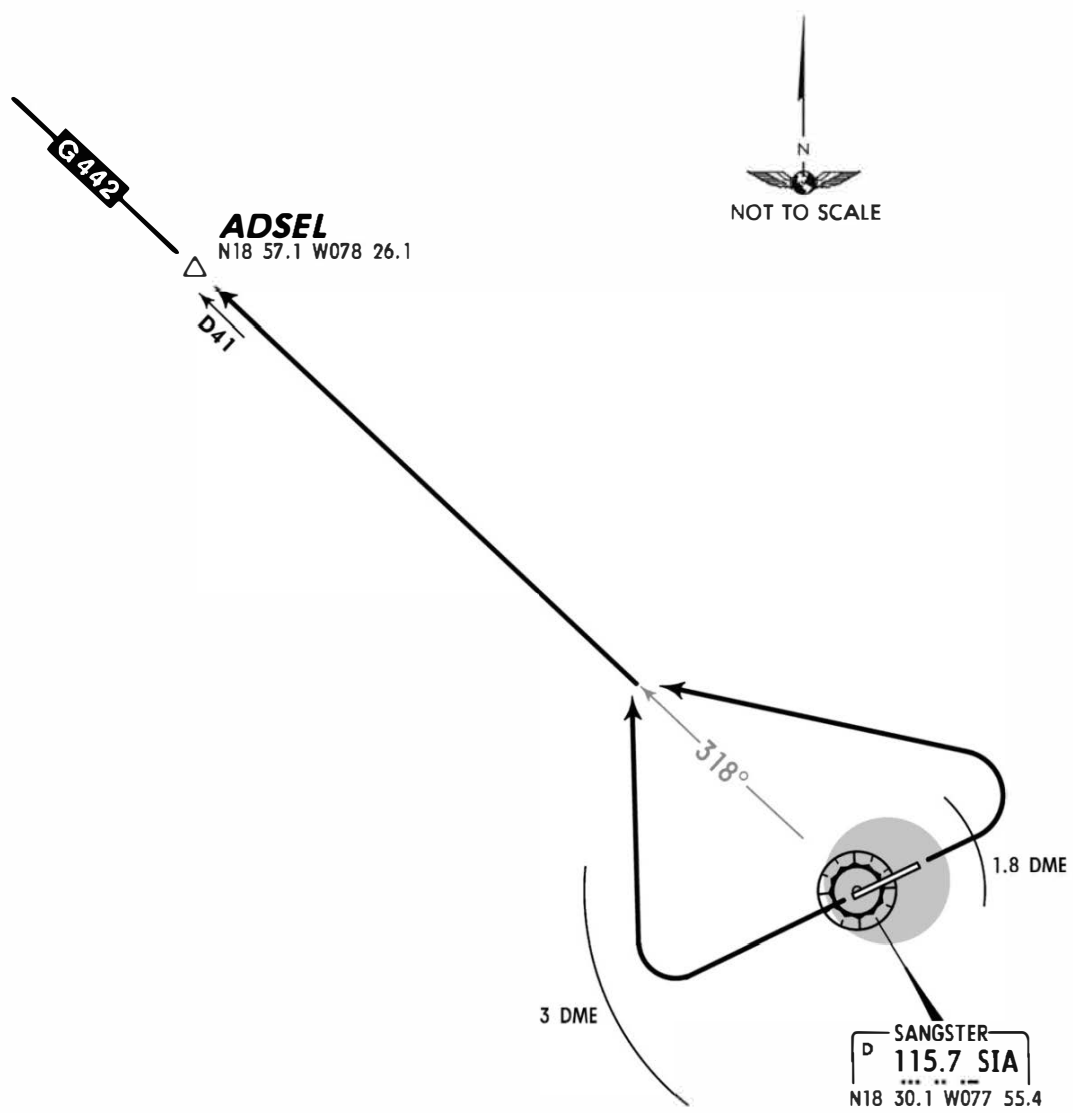


Apt Elev 7'
Trans level: FL180 Trans alt: 17000'
1. VOR/DME required.
2. WESTBOUND departure via ATS route G-442.



ADSEL ONE DEPARTURE
[ADSEL 1]
SPEED: MAX 250 KT BELOW 10000'



RWY	INITIAL CLIMB
07	Climb on runway heading until reaching SIA 1.8 DME, then turn LEFT.
25	Beyond the end of the runway and within SIA 3 DME turn RIGHT.
ROUTING	
Intercept and proceed outbound via SIA R-318 to ADSEL.	

CHANGES: SIA coordinates. © JEPPESEN, 2005, 2012. ALL RIGHTS RESERVED.