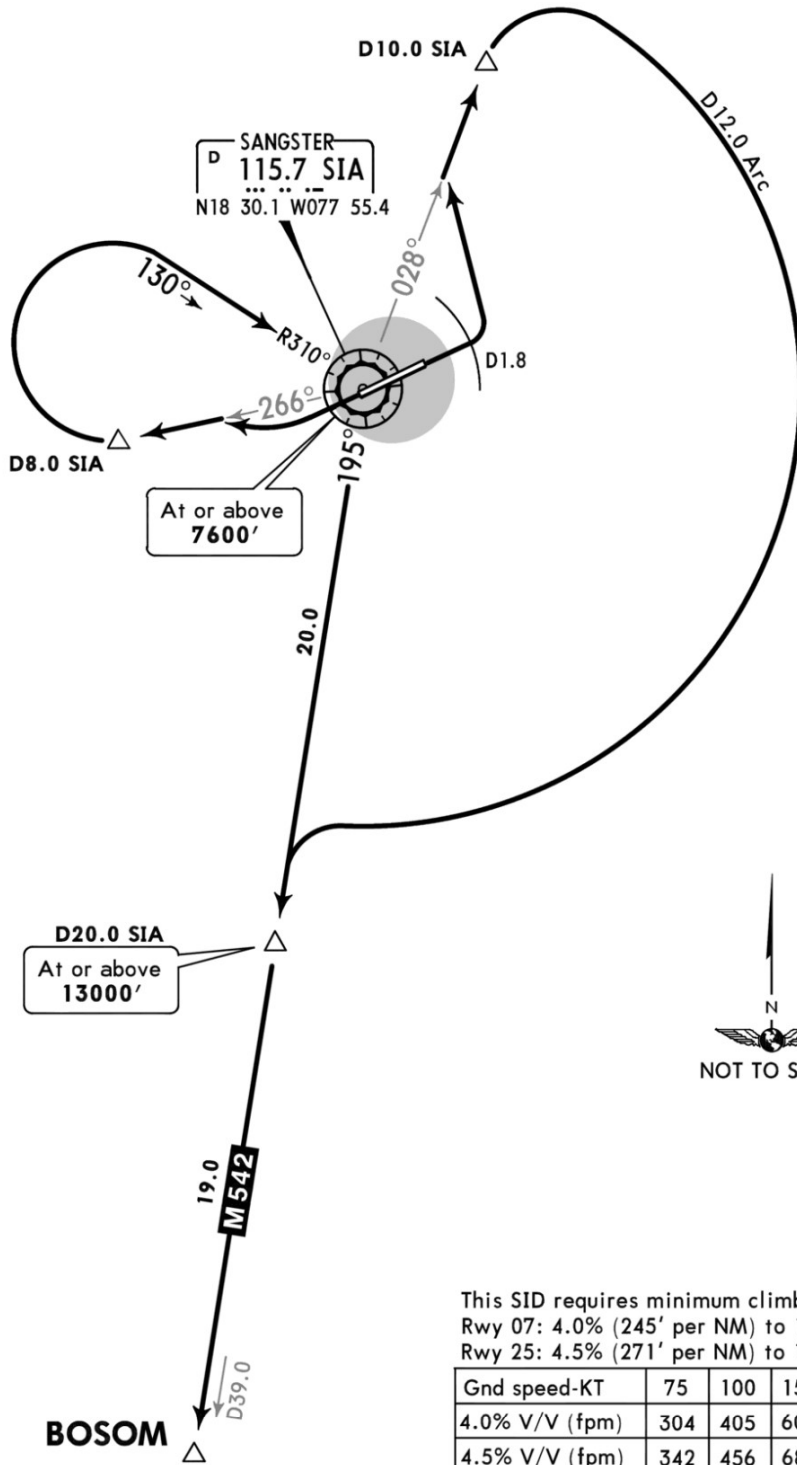


Apt Elev 4'
Trans level: FL180 Trans alt: 17000'
1. VOR/DME required.
2. SOUTHBOUND departure via ATS route M-542.
3. For aircraft climbing to 13000' or above.

BOSOM 7 DEPARTURE
[BOSOM7]

SPEED: MAX 250 KT BELOW 10000'



This SID requires minimum climb gradients of:
Rwy 07: 4.0% (245' per NM) to 13000'.
Rwy 25: 4.5% (271' per NM) to 13000'.

Gnd speed-KT	75	100	150	200	250	300
4.0% V/V (fpm)	304	405	608	810	1013	1215
4.5% V/V (fpm)	342	456	684	911	1139	1367

RWY	INITIAL CLIMB
07	Climb on runway heading until reaching D1.8 SIA, then turn LEFT to intercept and proceed via SIA R-028 outbound to D10.0 SIA, then turn RIGHT and proceed via D12.0 Arc SIA to intercept and proceed via SIA R-195 outbound to BOSOM. Cross D20.0 SIA R-195 at or above 13000'.
25	After take off, turn RIGHT and climb on SIA R-266 to D8.0 SIA. Turn RIGHT and proceed inbound via SIA R-310 to SIA VOR. Cross SIA VOR at or above 7600'. Intercept and proceed outbound via SIA R-195 to BOSOM. Cross D20.0 SIA R-195 at or above 13000'.