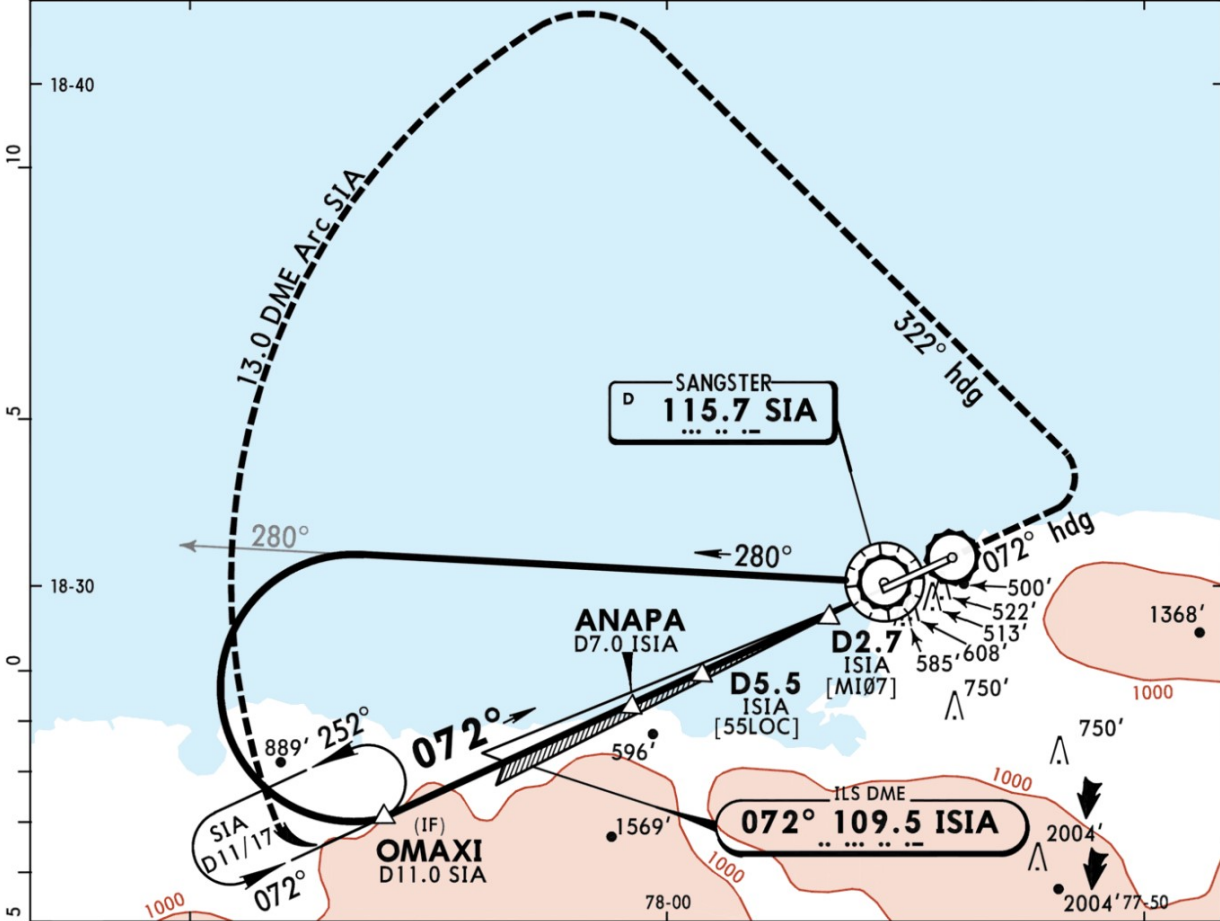


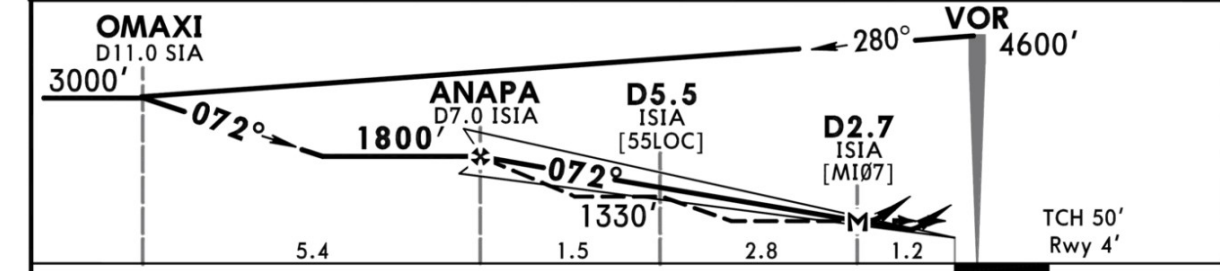
MKJS/MBJ  
SANGSTER INTL

JEPPESEN MONTEGO BAY, JAMAICA  
20 APR 18 (11-1)  
ILS DME Rwy 07

ATIS 127.9		SANGSTER Approach 120.8		SANGSTER Tower 118.75		Ground 121.7	
LOC ISIA <b>109.5</b>	Final Apch Crs <b>072°</b>	GS <b>ANAPA</b> 1800' (1796')	ILS DA(H) <b>304'</b> (300')	Apt Elev 4' Rwy 4'			
<b>MISSED APCH:</b> Climb 072° heading. At 500' (LOC only 800'), LEFT turn to 322° heading, then LEFT turn to intercept and proceed via SIA VOR 13 DME Arc to OMAXI SIA R-252/D11.0 climbing to 3000'. Maximum IAS 200 kts until established on 322° heading.							MSA SIA VOR
Alt Set: hPa (IN on req)		Rwy Elev: 0 hPa		Trans level: FL 180		Trans alt: 17000'	



LOC (GS out)	ISIA DME ALTITUDE	7.0	6.0	5.0	4.0	3.0
		1806'	1487'	1169'	850'	532'



Gnd speed-Kts	70	90	100	120	140	160	SALS PAPI	ILS: 500' LOC: 800' 072° hdg
Descent Angle 3.00°	372	478	531	637	743	849		
MAP at D2.7 or ANAPA to MAP	4.3	3:41	2:52	2:35	2:09	1:51		

STRAIGHT-IN LANDING RWY 07				CIRCLE-TO-LAND			
ILS		LOC (GS out)		Not Authorized South of Extended Rwy Centerline			
DA(H) 304' (300')		MDA(H) A,B: 580' (576') C,D: 600' (596')					
FULL		ALS out		Max Kts		MDA(H)	
A	1.3 km				100	900' (896') -1.9 km	
B			1.9 km		135	900' (896') -2.8 km	
C			2.4 km		180	1000' (996') -3.7 km	
D			3.0 km		205	1000' (996') -4.6 km	

Chart linked to Navigraph account "chadsani" (chadsani21@gmail.com)