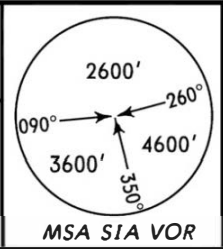
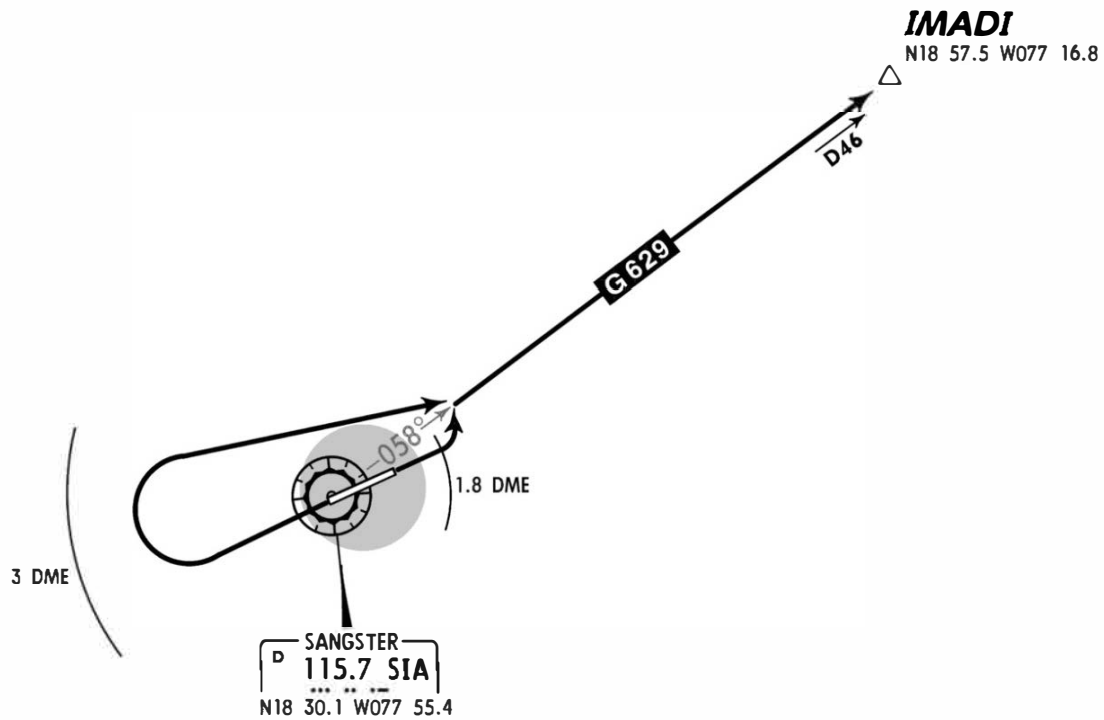


Ap<sup>r</sup> Elev 7'  
Trans level: FL180 Trans alt: 17000'  
**1. VOR/DME required.**  
2. NORTHBOUND departure via ATS route G-629.



**IMADI ONE DEPARTURE**  
[IMADI1]  
**SPEED: MAX 250 KT BELOW 10000'**



RWY	INITIAL CLIMB
07	Climb on runway heading until reaching SIA 1.8 DME, then turn LEFT.
25	Beyond the end of the runway and within SIA 3 DME turn RIGHT.
ROUTING	
Intercept and proceed outbound via SIA R-058 to IMADI.	

CHANGES: SIA coordinates, chart reindexed.

© JEPPESEN, 2005, 2012. ALL RIGHTS RESERVED.