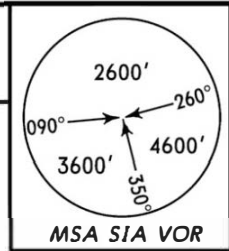


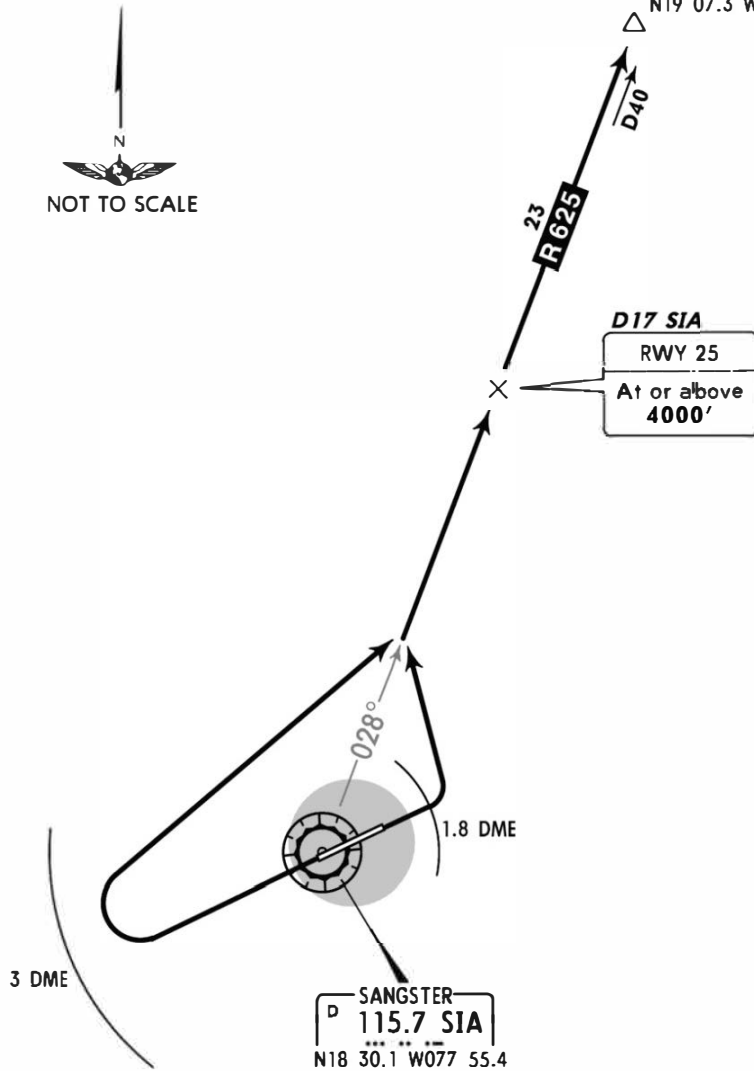
Apt Elev 7'
Trans level: FL180 Trans alt: 17000'
1. VOR/DME required.
2. NORTHBOUND departure via ATS route R-625.



KAPAR ONE DEPARTURE
[KAPAR1]
SPEED MAX 250 KT BELOW 10000'



KAPAR
N19 07.3 W077 38.6



RWY	INITIAL CLIMB
07	Climb on runway heading until reaching SIA 1.8 DME, then turn LEFT.
25	Beyond the end of the runway and within SIA 3 DME turn RIGHT.
ROUTING	
Intercept and proceed via SIA R-028 outbound to KAPAR.	

CHANGES: SIA coordinates, chart reindexed.

© JEPPESEN, 2005, 2012. ALL RIGHTS RESERVED.