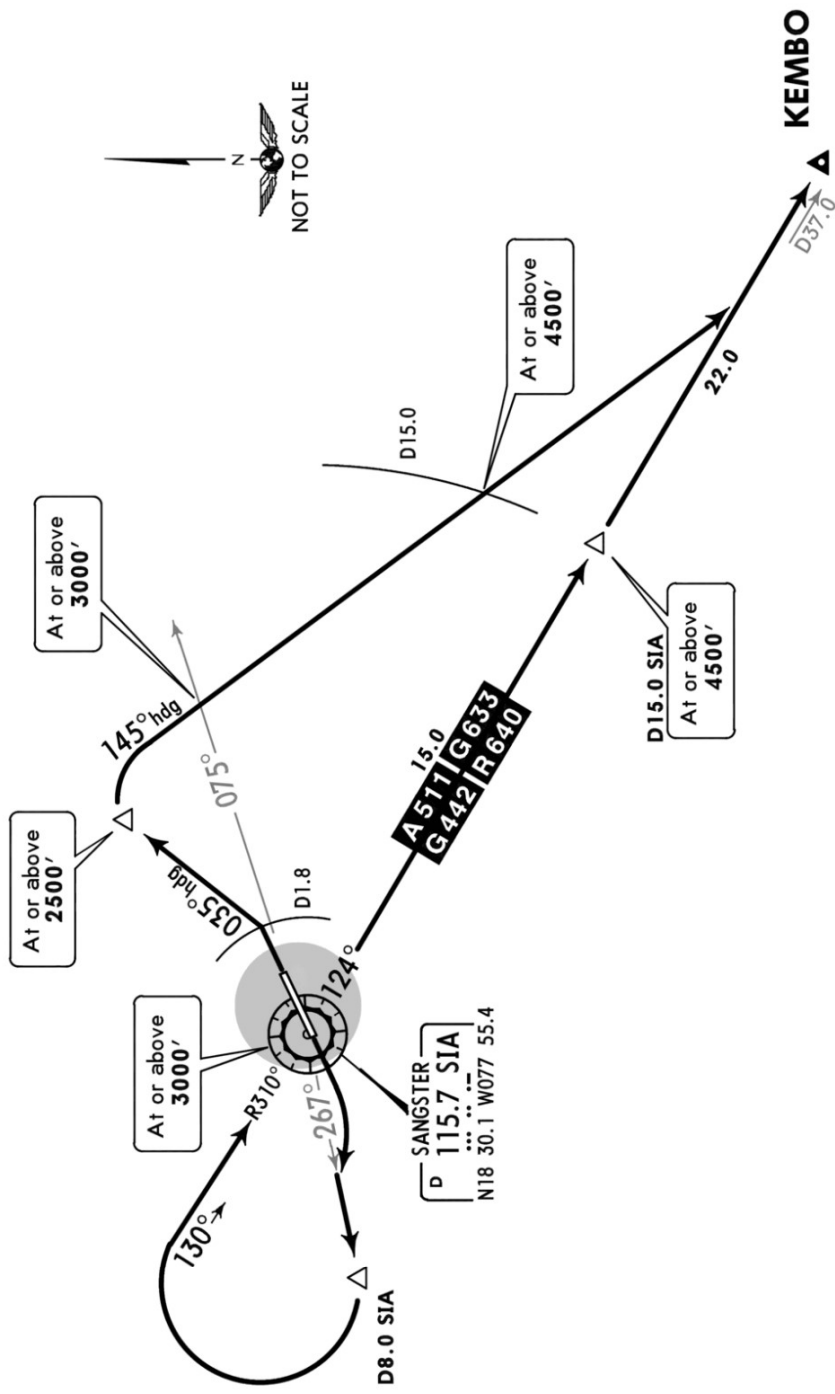


Apt Elev  
4'

Trans level: FL 180 Trans alt: 17000'  
1. VOR/DME required.  
2. EASTBOUND departure via ATS route A-511, G-442, G-633, and R-640.

KEMBO 3 DEPARTURE  
[KEMBO3]

**SPEED: MAX 250 KT BELOW 10000'**



RWY	INITIAL CLIMB
07	After take-off MAINTAIN runway heading until D1.8 SIA, then turn LEFT and proceed via heading 035° climbing to 2500', then turn RIGHT and proceed via heading 145° to intercept ATS route. Cross SIA R-075 at or above 3000' and D15.0 SIA at or above 4500'.
25	After take-off, turn RIGHT and climb on SIA R-267 to D8.0 SIA. Turn RIGHT to intercept and proceed inbound via SIA R-310 to SIA VOR and intercept ATS route. Cross SIA VOR at or above 3000' and D15.0 SIA at or above 4500'.

Chart linked to Navigraph account "chadsani" (chadsani21@gmail.com)