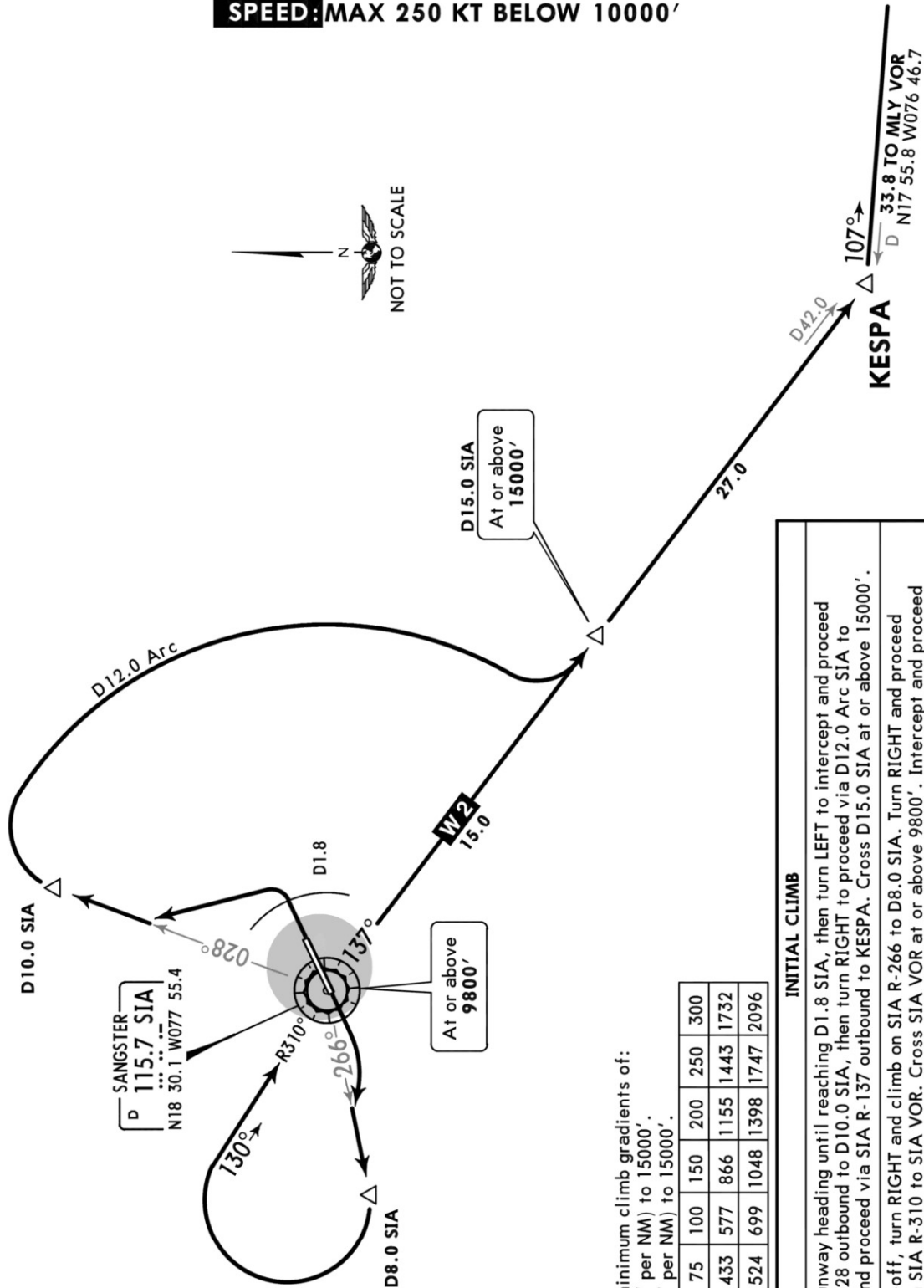


Apt Elev 4'  
Trans level: FL180 Trans alt: 17000'  
1. VOR/DME required.  
2. SOUTHBOUND departure via ATS route W-2.  
3. For aircraft climbing to 15000' or above.

**KESPA 2 DEPARTURE**  
[KESPA2]

**SPEED: MAX 250 KT BELOW 10000'**



This SID requires minimum climb gradients of:  
Rwy 07: 6.9% (421' per NM) to 15000'.  
Rwy 25: 5.7% (345' per NM) to 15000'.

Grnd speed-KT	75	100	150	200	250	300
5.7% V/V (fpm)	433	577	866	1155	1443	1732
6.9% V/V (fpm)	524	699	1048	1398	1747	2096

RWY	INITIAL CLIMB
07	Climb on runway heading until reaching D1.8 SIA, then turn LEFT to intercept and proceed via SIA R-028 outbound to D10.0 SIA, then turn RIGHT to proceed via D12.0 Arc SIA to intercept and proceed via SIA R-137 outbound to KESPA. Cross D15.0 SIA at or above 15000'.
25	After take-off, turn RIGHT and climb on SIA R-266 to D8.0 SIA. Turn RIGHT and proceed inbound via SIA R-310 to SIA VOR. Cross SIA VOR at or above 9800'. Intercept and proceed outbound via SIA R-137 to KESPA. Cross D15.0 SIA at or above 15000'.

Chart linked to Navigraph account "chadsani" (chadsani21@gmail.com)