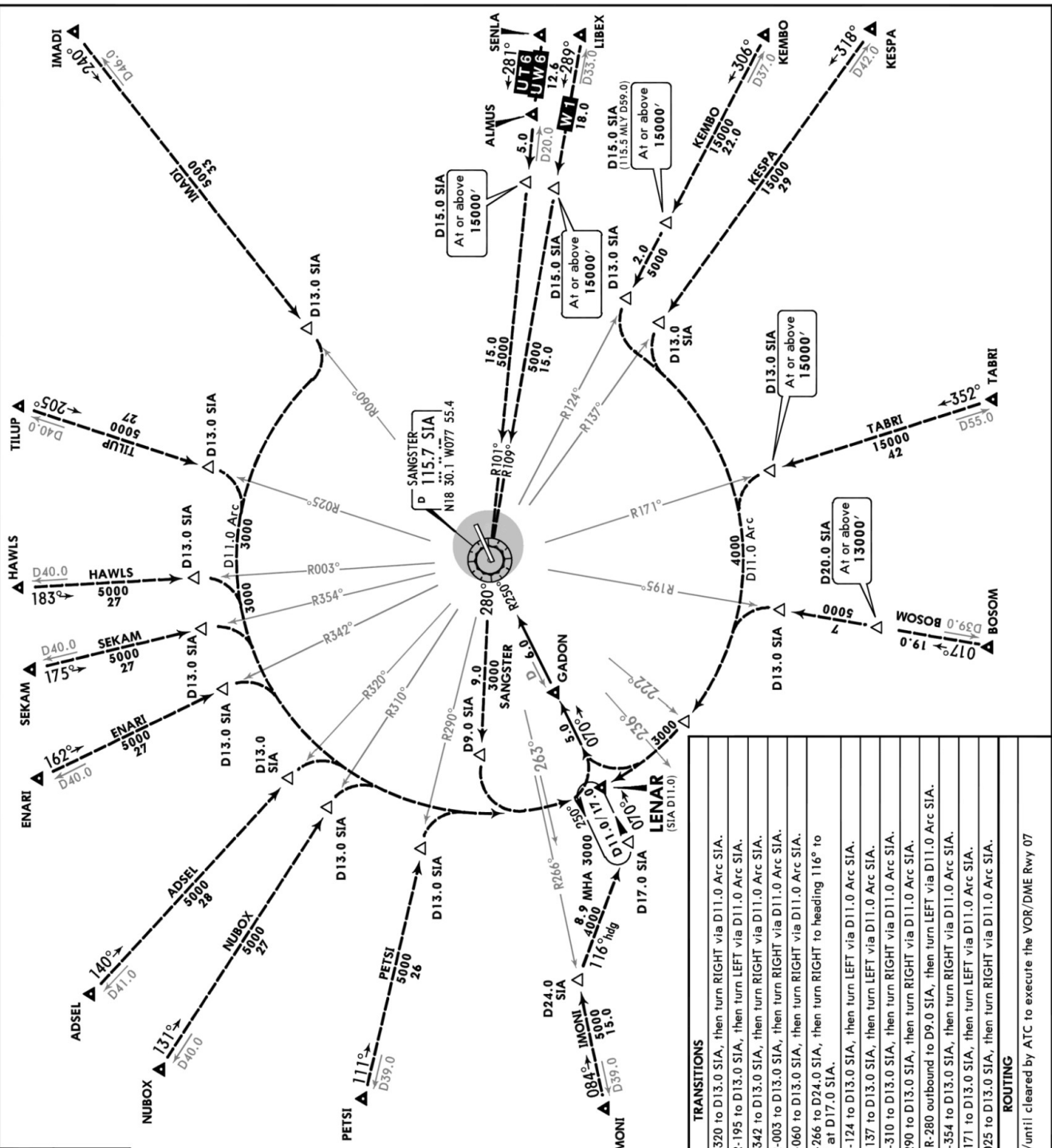
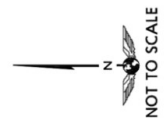


MKJS/MBJ
SANGSTER INTL

ATIS 127.9 Apt Elev 4
Alt Set: hPa (IN on req)
Trans level: FL180 Trans alt: 17000
1. VOR/DME required.
2. DME Arcs and hold are based on SIA VOR.

LENAR 5 ARRIVAL
[LENAR5]
SPEED: MAX 250 KT
BELOW 10000'



TRANSITIONS	
ADSEL	From ADSEL to LENAR: Via SIA R-320 to D13.0 SIA, then turn RIGHT via D11.0 Arc SIA.
BOSOM	From BOSOM to LENAR: Via SIA R-195 to D13.0 SIA, then turn LEFT via D11.0 Arc SIA.
ENARI	From ENARI to LENAR: Via SIA R-342 to D13.0 SIA, then turn RIGHT via D11.0 Arc SIA.
HAWLS	From HAWLS to LENAR: Via SIA R-003 to D13.0 SIA, then turn RIGHT via D11.0 Arc SIA.
IMADI	From IMADI to LENAR: Via SIA R-060 to D13.0 SIA, then turn RIGHT via D11.0 Arc SIA.
IMONI	From IMONI to LENAR: Via SIA R-266 to D24.0 SIA, then turn RIGHT to heading 116° to intercept the SIA R-250 inbound at D17.0 SIA.
KEMBO	From KEMBO to LENAR: Via SIA R-124 to D13.0 SIA, then turn LEFT via D11.0 Arc SIA.
KESPA	From KESPA to LENAR: Via SIA R-137 to D13.0 SIA, then turn LEFT via D11.0 Arc SIA.
NUBOX	From NUBOX to LENAR: Via SIA R-310 to D13.0 SIA, then turn RIGHT via D11.0 Arc SIA.
PETSU	From PETSU to LENAR: Via SIA R-290 to D13.0 SIA, then turn LEFT via D11.0 Arc SIA.
SANGSTER	From SIA VOR to LENAR: Via SIA R-280 outbound to D9.0 SIA, then turn LEFT via D11.0 Arc SIA.
SEKAM	From SEKAM to LENAR: Via SIA R-354 to D13.0 SIA, then turn RIGHT via D11.0 Arc SIA.
TABRI	From TABRI to LENAR: Via SIA R-171 to D13.0 SIA, then turn LEFT via D11.0 Arc SIA.
TILUP	From TILUP to LENAR: Via SIA R-025 to D13.0 SIA, then turn RIGHT via D11.0 Arc SIA.
ROUTING	
Hold at LENAR at ATC assigned altitude unless/until cleared by ATC to execute the VOR/DME Rwy 07 Approach procedure.	

CHANGES: Procedure renumbered, KAPAR transition removed, HAWLS and TILUP transitions added, KEMBO transition revised.
© JEPPESEN, 2005, 2019. ALL RIGHTS RESERVED.