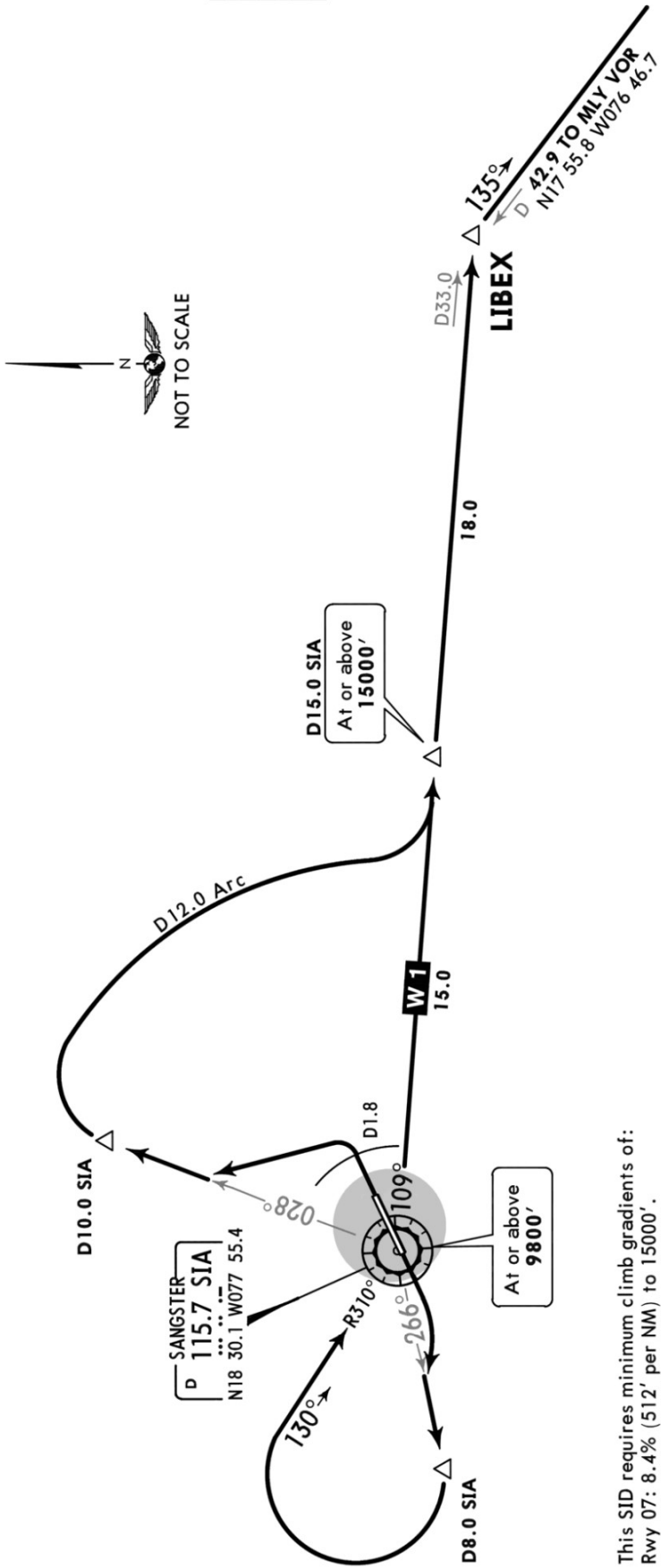


Apt Elev 4'
Trans level: FL180 Trans alt: 17000'
1. VOR/DME required.
2. EASTBOUND departure via ATS route W-1.
3. For aircraft climbing to 15000' or above.

LIBEX 2 DEPARTURE [LIBEX2]

SPEED: MAX 250 KT BELOW 10000'



This SID requires minimum climb gradients of:
Rwy 07: 8.4% (512' per NM) to 15000'.
Rwy 25: 5.7% (345' per NM) to 15000'.

Gnd speed-KT	75	100	150	200	250	300
5.7% V/V (fpm)	433	577	866	1155	1443	1732
8.4% V/V (fpm)	638	851	1276	1701	2127	2552

RWY	INITIAL CLIMB
07	Climb on runway heading until reaching D1.8 SIA, then turn LEFT to intercept and proceed via SIA R-028 outbound to D10.0 SIA, then turn RIGHT to proceed via D12.0 Arc SIA to intercept and proceed via SIA R-109 outbound to LIBEX. Cross D15.0 SIA at or above 15000'.
25	After take off, turn RIGHT and climb on SIA R-266 to D8.0 SIA. Turn RIGHT and proceed inbound via SIA R-310 to SIA VOR. Cross SIA VOR at or above 9800'. Intercept and proceed outbound via SIA R-109 to LIBEX. Cross D15.0 SIA at or above 15000'.

Chart linked to Navigraph account "chadsani" (chadsani21@gmail.com)