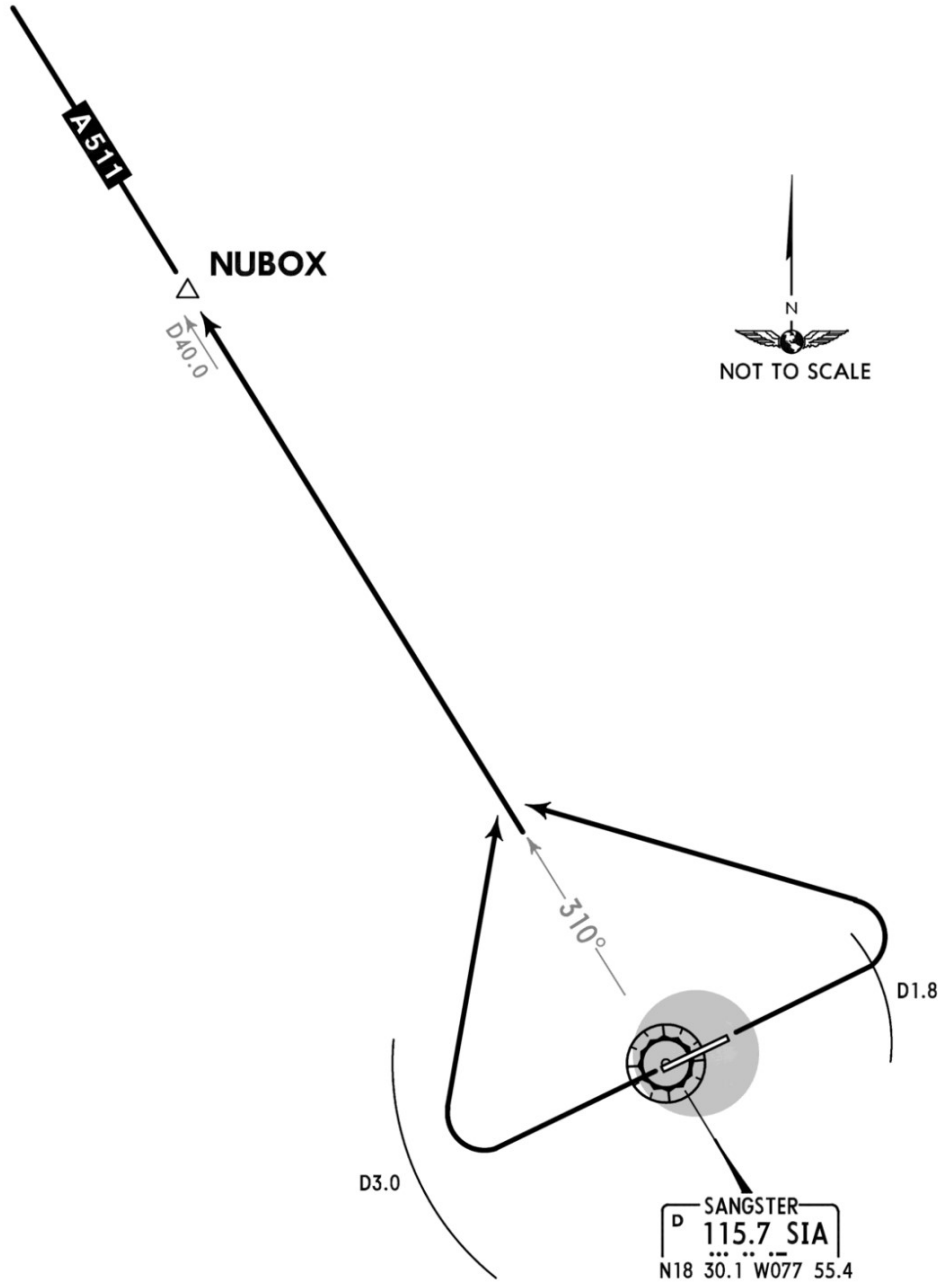


Apt Elev
4'

Trans level: FL180 Trans alt: 17000'
1. VOR/DME required.
2. WESTBOUND departure via ATS route A-511.

NUBOX 2 DEPARTURE
[NUBOX2]

SPEED: MAX 250 KT BELOW 10000'



| RWY | INITIAL CLIMB |
|--|--|
| 07 | Climb on runway heading until reaching D1.8 SIA, then turn LEFT. |
| 25 | Beyond the end of the runway and within D3.0 SIA turn RIGHT. |
| ROUTING | |
| Intercept and proceed outbound via SIA R-310 to NUBOX. | |

CHANGES: Chart reindexed.

© JEPPESEN, 2005, 2019. ALL RIGHTS RESERVED.

NAVIGRAPH CHARTS INTENDED FOR FLIGHT SIMULATION ONLY - NOT FOR NAVIGATIONAL USE

Chart linked to Navigraph account "chadsani" (chadsani21@gmail.com)