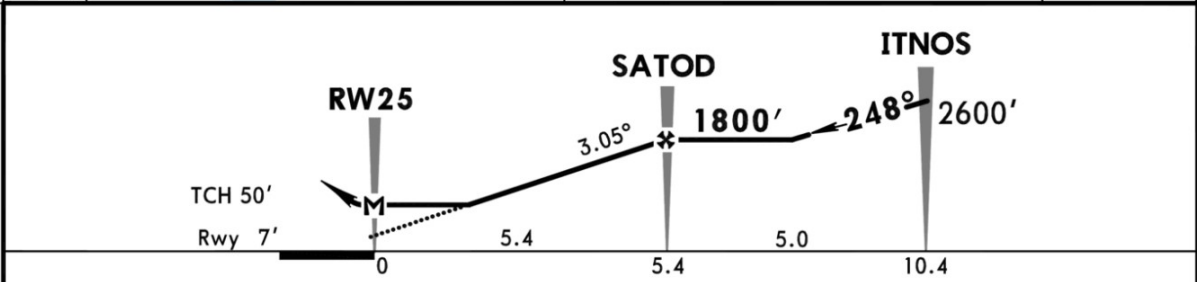
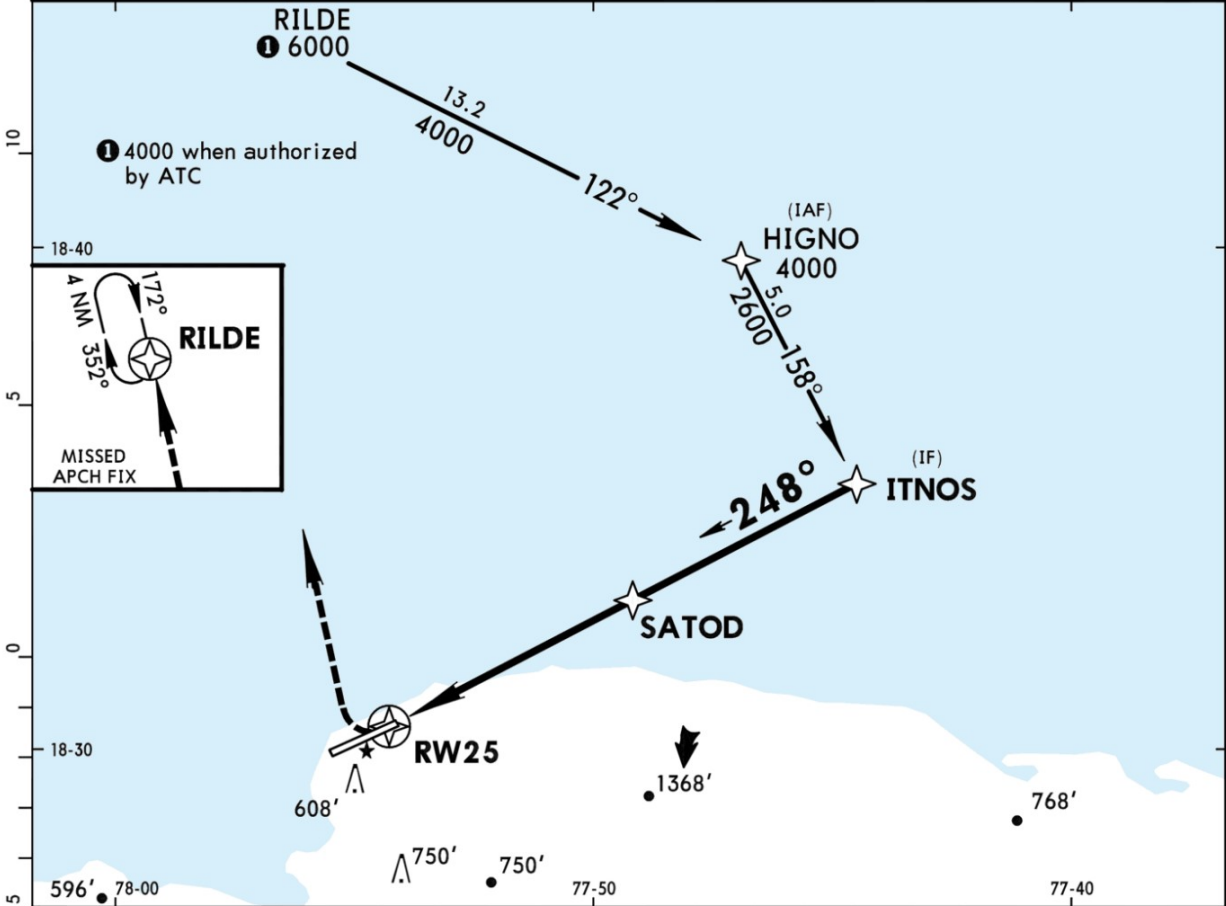


ATIS 127.9		SANGSTER Approach 120.8		SANGSTER Tower 118.75		Ground 121.7
RNAV	Final Apch Crs 248°	Minimum Alt SATOD 1800' (1793')	RNAV MDA(H) 790' (783')	Apt Elev 4'	Rwy 25 7'	4600' MSA ARP
MISSED APCH: Climbing RIGHT turn to 4000' direct RILDE and hold.						
Alt Set: hPa (IN on req) Rwy Elev: 0 hPa Trans level: FL 180 Trans alt: 17000'						
1. GPS or RNP-0.30 required. 2. DME/DME RNP-0.30 not authorized.						



Gnd speed-Kts	70	90	100	120	140	160	ALS 4000' RT RILDE
Descent angle 3.05°	378	486	540	648	755	863	
MAP at RW25 or SATOD to MAP	5.4	4:38	3:36	3:14	2:42	2:19	

STRAIGHT-IN LANDING RWY 25			CIRCLE-TO-LAND		
RNAV MDA(H) 790' (783')			MDA(H)		
ALS out			Max Kts		
A	1.9 km		100	900' (896') -2.3 km	
B	2.3 km		135		
C	4.2 km		180		
D	4.6 km		205	1000' (996') -5.6m	

Chart linked to Navigraph account "chadsani" (chadsani21@gmail.com)