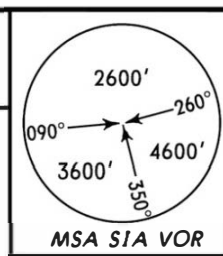
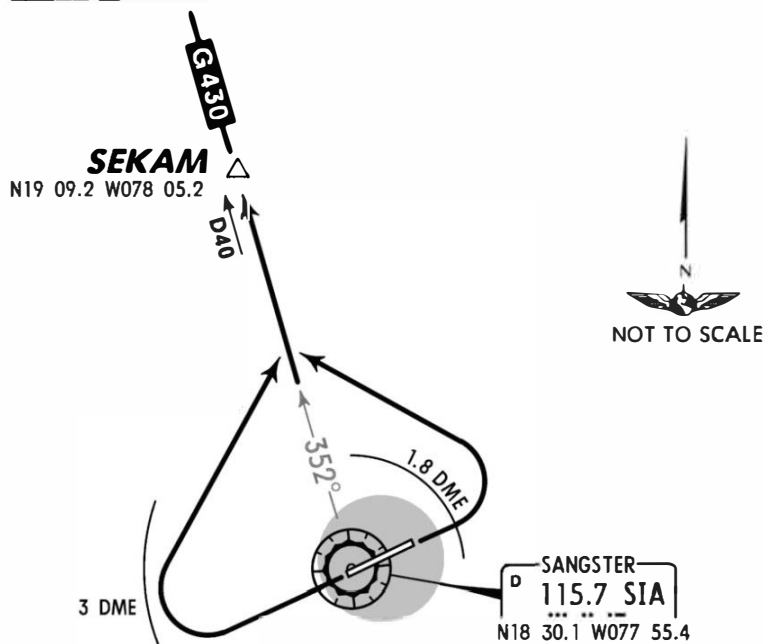


Apt Elev 7'	Trans level: FL180 Trans alt: 17000' 1. VOR/DME required. 2. NORTHBOUND departure via ATS route G-430.
----------------	--

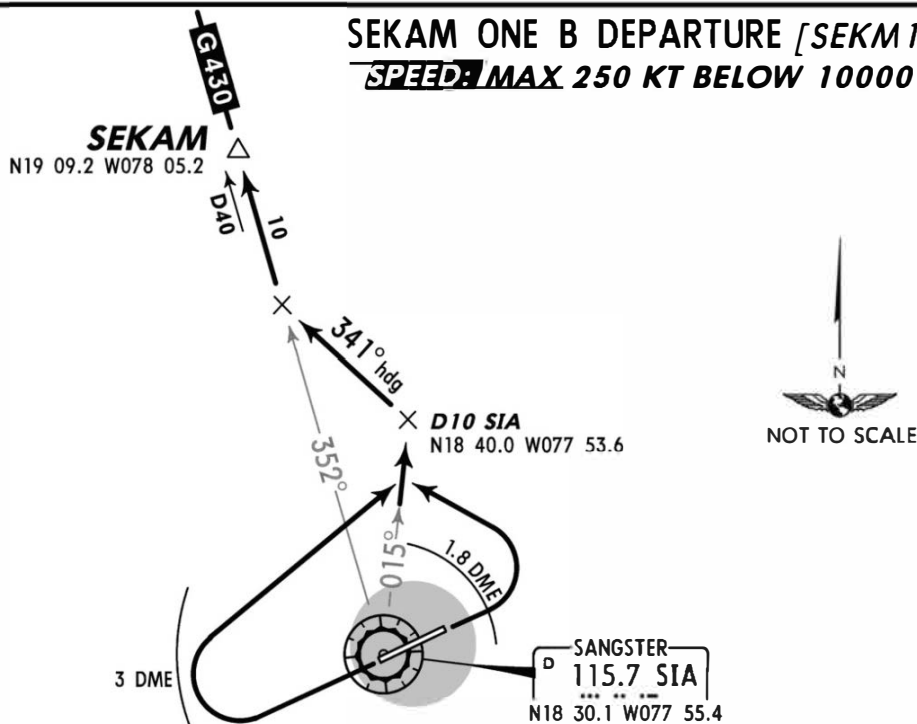


SEKAM ONE A DEPARTURE [SEKM1A]
~~SPEED: MAX 250 KT BELOW 10000'~~



RWY	INITIAL CLIMB
07	Climb on runway heading until reaching SIA 1.8 DME, then turn LEFT.
25	Beyond the end of the runway and within SIA 3 DME turn RIGHT.
ROUTING	
Intercept and proceed outbound via SIA R-352 to SEKAM.	

SEKAM ONE B DEPARTURE [SEKM1B]
~~SPEED: MAX 250 KT BELOW 10000'~~



RWY	INITIAL CLIMB
07	Climb on runway heading until reaching SIA 1.8 DME, then turn LEFT.
25	Beyond the end of the runway and within SIA 3 DME turn RIGHT.
ROUTING	
Intercept and proceed outbound via SIA R-015 to D10 SIA, then turn LEFT to a 341° heading to intercept and proceed via SIA R-352 to SEKAM.	

CHANGES: SIA coordinates, chart reindexed.

© JEPPESSEN, 2005, 2012. ALL RIGHTS RESERVED.