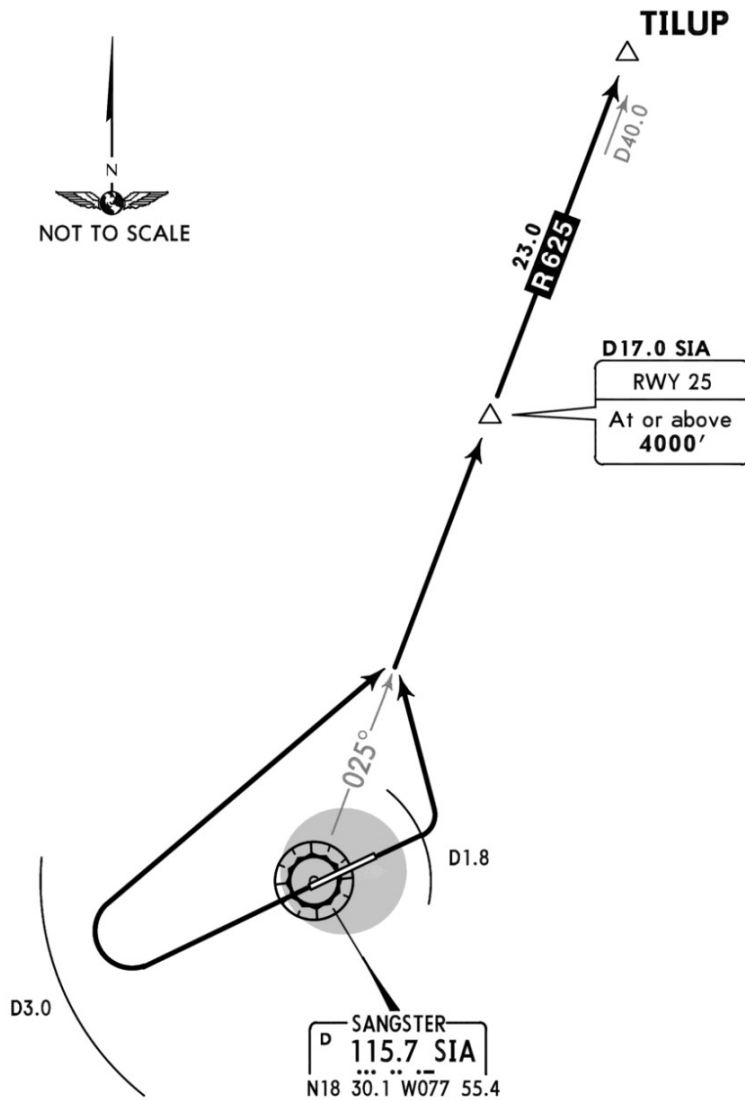


Apt Elev  
4'

Trans level: FL180 Trans alt: 17000'  
1. VOR/DME required.  
2. NORTHBOUND departure via ATS route R-625.

TILUP 1 DEPARTURE  
[TILUP1]

**SPEED: MAX 250 KT BELOW 10000'**



RWY	INITIAL CLIMB
07	Climb on runway heading until reaching D1.8 SIA, then turn LEFT to intercept and proceed via SIA R-025 outbound to TILUP.
25	Beyond the end of the runway and within D3.0 SIA turn RIGHT to intercept and proceed via SIA R-025 to TILUP. Cross D17.0 SIA at or above 4000'.

CHANGES: New procedure at this airport.

© JEPPESEN, 2005, 2019. ALL RIGHTS RESERVED.

**NAVIGRAPH CHARTS INTENDED FOR FLIGHT SIMULATION ONLY - NOT FOR NAVIGATIONAL USE**

Chart linked to Navigraph account "chadsani" (chadsani21@gmail.com)