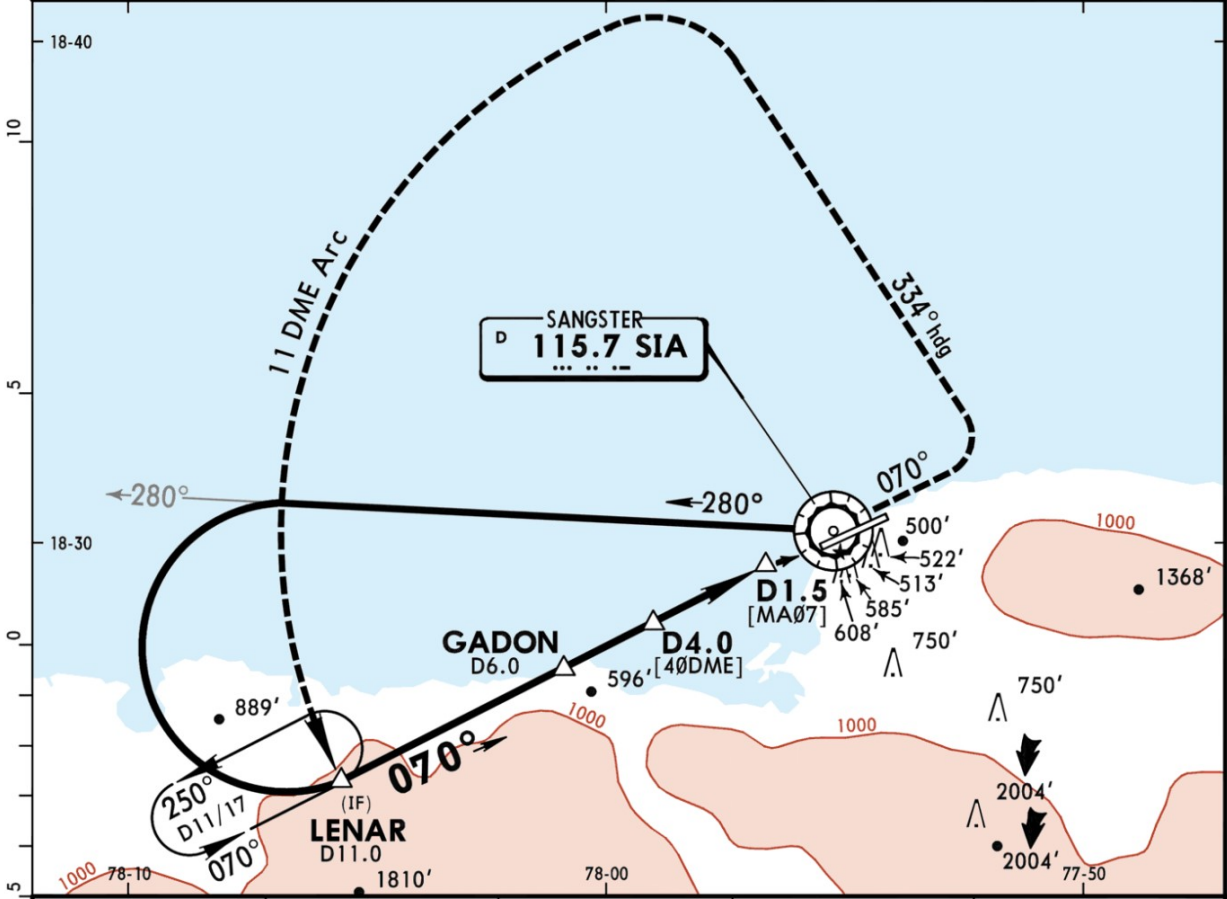


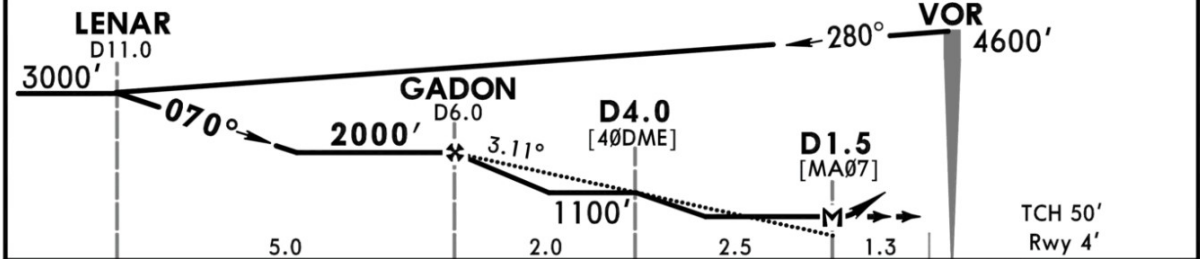
MKJS/MBJ
SANGSTER INTL

JEPPESEN MONTEGO BAY, JAMAICA
15 DEC 17 (13-1)
VOR DME Rwy 07

ATIS 127.9		SANGSTER Approach 120.8		SANGSTER Tower 118.75		Ground 121.7	
VOR SIA 115.7	Final Apch Crs 070°	Minimum Alt GADON 2000' (1996')	MDA(H) Refer to Minimums	Apt Elev 4' Rwy 4'			
MISSED APCH: Climb on SIA VOR R-070. At 800', LEFT turn to 334° heading, then LEFT turn to intercept and proceed via SIA VOR 11 DME Arc to LENAR R-250/D11.0 climbing to 3000'. Maximum IAS 200 kts until established on 334° heading.							MSA SIA VOR
Alt Set: hPa (IN on req)		Rwy Elev: 0 hPa		Trans level: FL 180		Trans alt: 17000'	



SIA DME	5.0	4.0	3.0	2.0
ALTITUDE	1672'	1344'	1016'	688'



Gnd speed-Kts	70	90	100	120	140	160	SALS	SIA R-068
Descent Angle 3.11°	385	495	550	660	770	880		
MAP at D1.5							PAPI	↑ on

STRAIGHT-IN LANDING RWY 07		CIRCLE-TO-LAND	
A, B: 590' (586')		Not Authorized Southeast of Extended Rwy Centerline	
C: 610' (606')		ALS out	
D: 630' (626')		Max Kts	
A	2.6 km	100	900' (896') -2.6 km
B		135	900' (896') -2.8 km
C		180	1000' (996') -3.7 km
D		205	1220' (1216') -4.6 km

PANS OPS

CHANGES: Rwy 07 PAPI.

© JEPPESEN, 2001, 2017. ALL RIGHTS RESERVED.

NAVIGRAPH CHARTS INTENDED FOR FLIGHT SIMULATION ONLY - NOT FOR NAVIGATIONAL USE

Chart linked to Navigraph account "chadsani" (chadsani21@gmail.com)